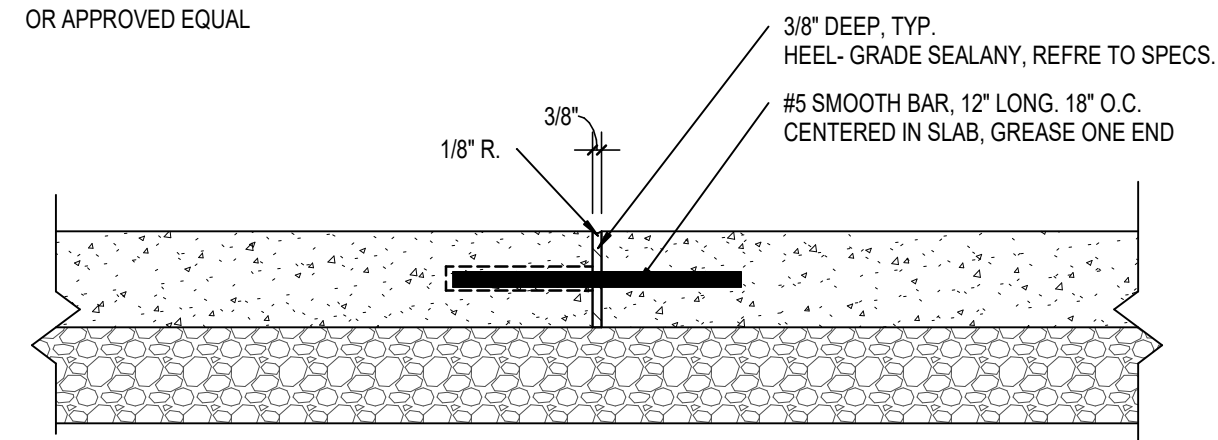
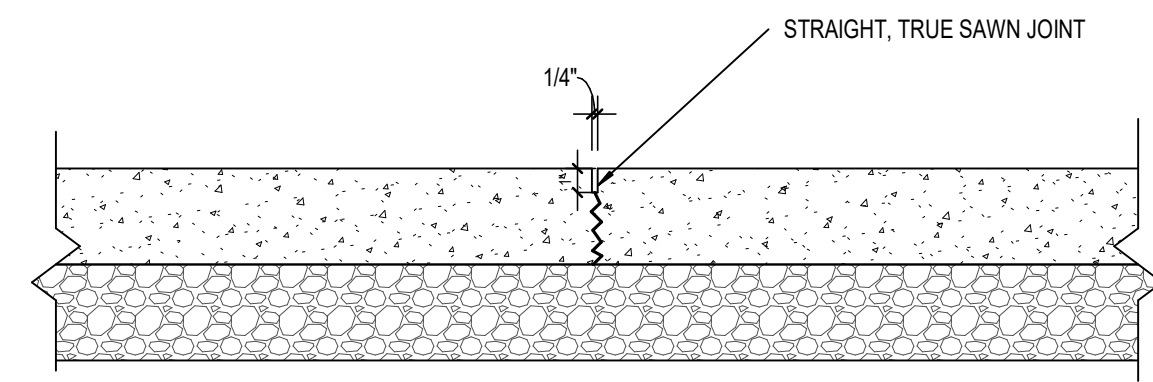


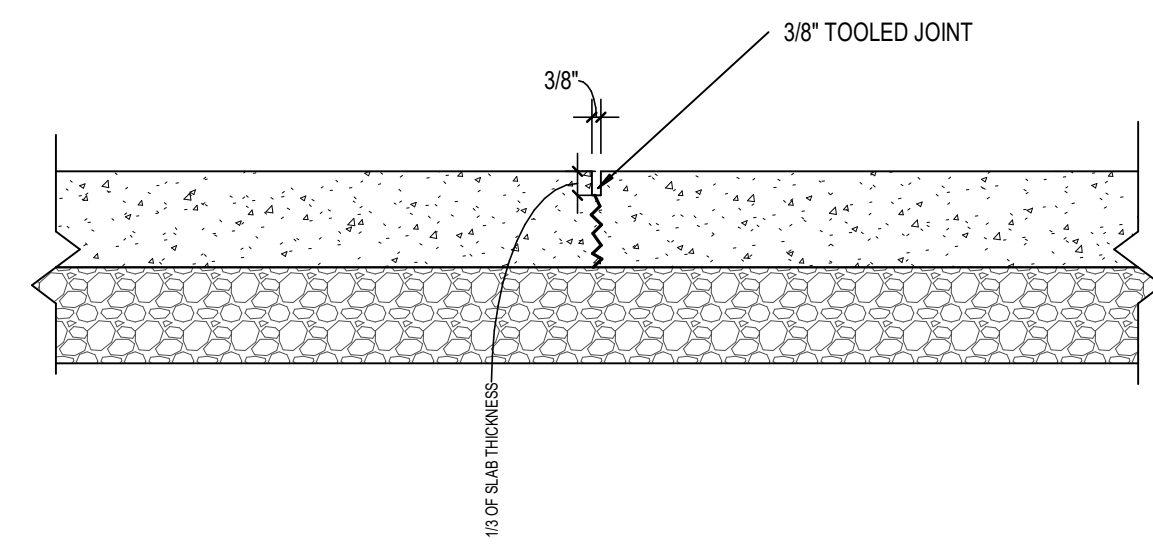
NOTE:
EXPANSION JOINT MATERIAL SHALL BE
"Z" STRIP" EXPANSION MATERIAL WITH
REMOVABLE CAP BY GREENBREAK
OR APPROVED EQUAL



EXPANSION JOINT
AS INDICATED ON PLAN DRAWINGS, PLACE
EXPANSION JOINTS WHERE CONCRETE POURS MEET
AND ANYWHERE CONCRETE PATCHING IS REQUIRED

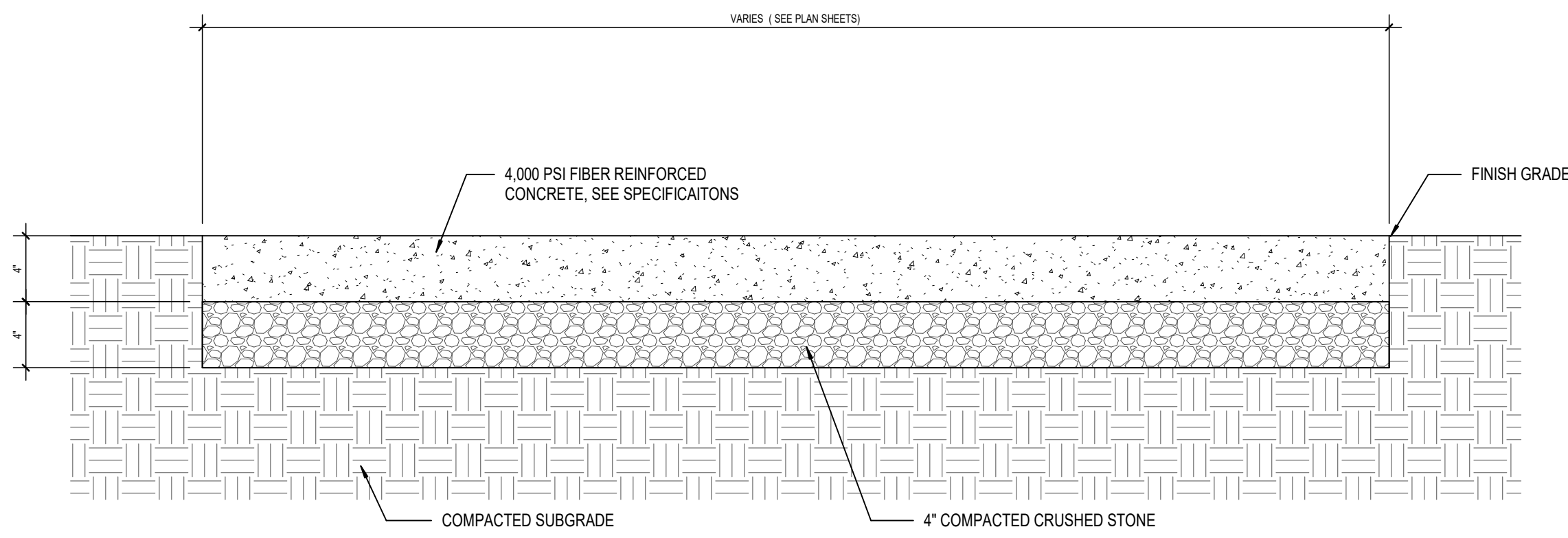


SAWN CONTROL JOINT
AS INDICATED ON PLAN DRAWINGS, CONTINUE
TO WALL FACE IN ALL APPLICABLE CONDITIONS



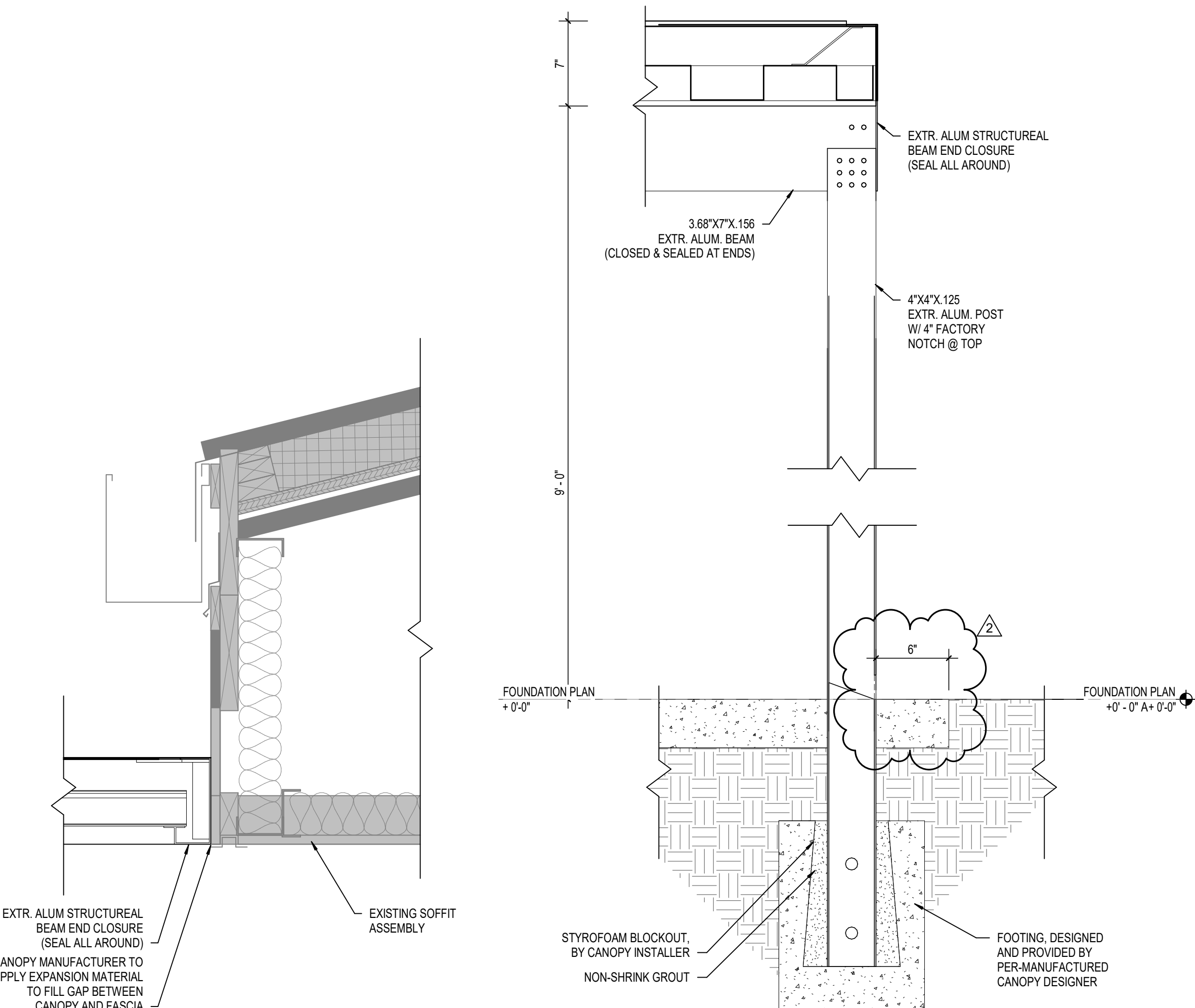
TOOLED CONTROL JOINT
BRUSH-OUT MARKS FROM TROWEL ON EITHER SIDE OF
JOINT, LEAVING ONLY THE JOINT SCORED SMOOTH

6 CONCRETE JOINTING
A220 SCALE: 1 1/2" = 1'-0"



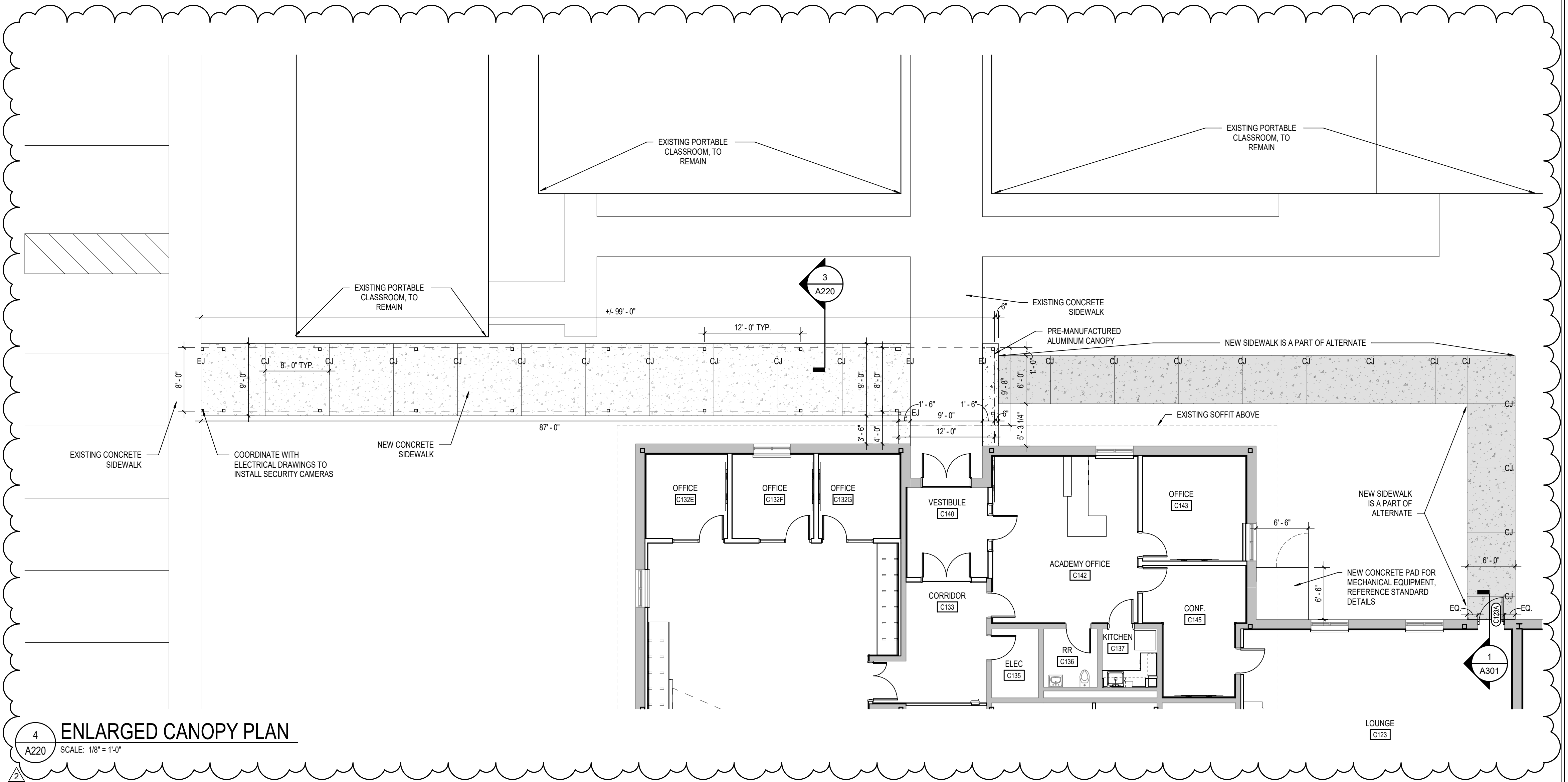
- NOTES:
- CONTROL JOINTS, EXPANSION JOINTS AND EDGES OF SIDEWALKS INDICATED AS HAND-TOOLED SHALL BE DRESSED
 - AFTER EACH FINISHING OPERATION, PROVIDE EXPANSION JOINTS AT INTERSECTION WITH ANOTHER SIDEWALK, BETWEEN WALKS AND BUILDING SLABS, AND AT OTHER POINTS AS INDICATED ON THE DRAWINGS
 - REFER TO PLAN DRAWINGS FOR LOCATION OF CONTROL AND EXPANSION JOINTS

5 CONCRETE PAVEMENT DETAIL
A220 SCALE: 1 1/2" = 1'-0"

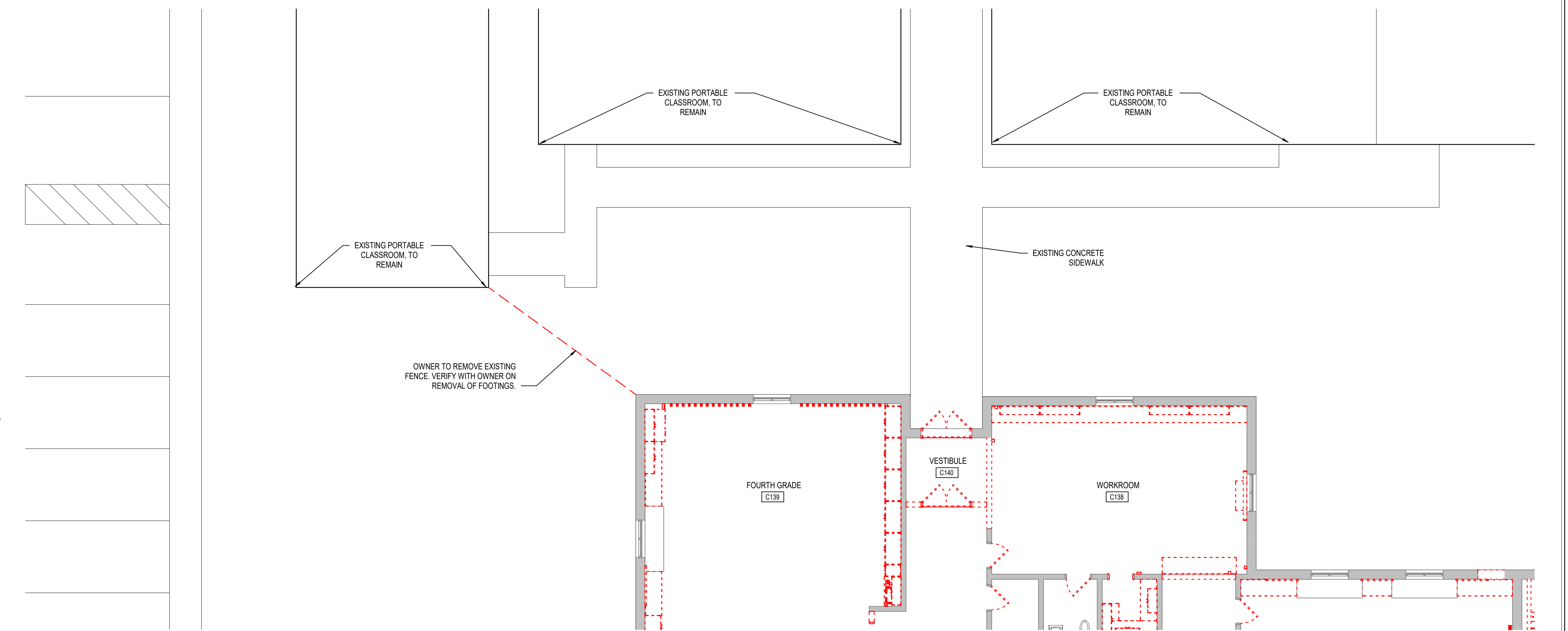


2 CANOPY SECTION
A220 SCALE: 1 1/2" = 1'-0"

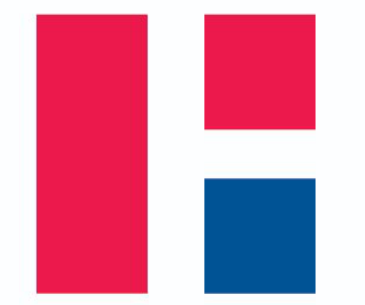
3 CANOPY SECTION
A220 SCALE: 1 1/2" = 1'-0"



4 ENLARGED CANOPY PLAN
A220 SCALE: 1/8" = 1'-0"



1 DEMOLITION PLAN
A220 SCALE: 1/8" = 1'-0"



CSO
8831 Keystone Crossing Indianapolis, IN 46240
317.846.7800 | csoinc.net

**HAMILTON SOUTHEASTERN SCHOOLS
RENOVATIONS TO
DURBIN LEARNING CENTER**
18000 DURBIN RD, NOBLESVILLE, IN 46060

SCOPE DRAWINGS:
These drawings indicate the general scope of the project in terms of architectural design content, the structural of mechanical, electrical and electrical systems.
The drawings do not necessarily indicate or describe all work required for the performance and completion of the project.
On the basis of the general scope indicated on drawings, the trade contractors shall furnish all items required for the proper execution and completion of the work.

REVISIONS:
2 ADDENDUM #2 01-21-25

ISSUE DATE 01/03/2025
DRAWN BY KRK
CHECKED BY EHM

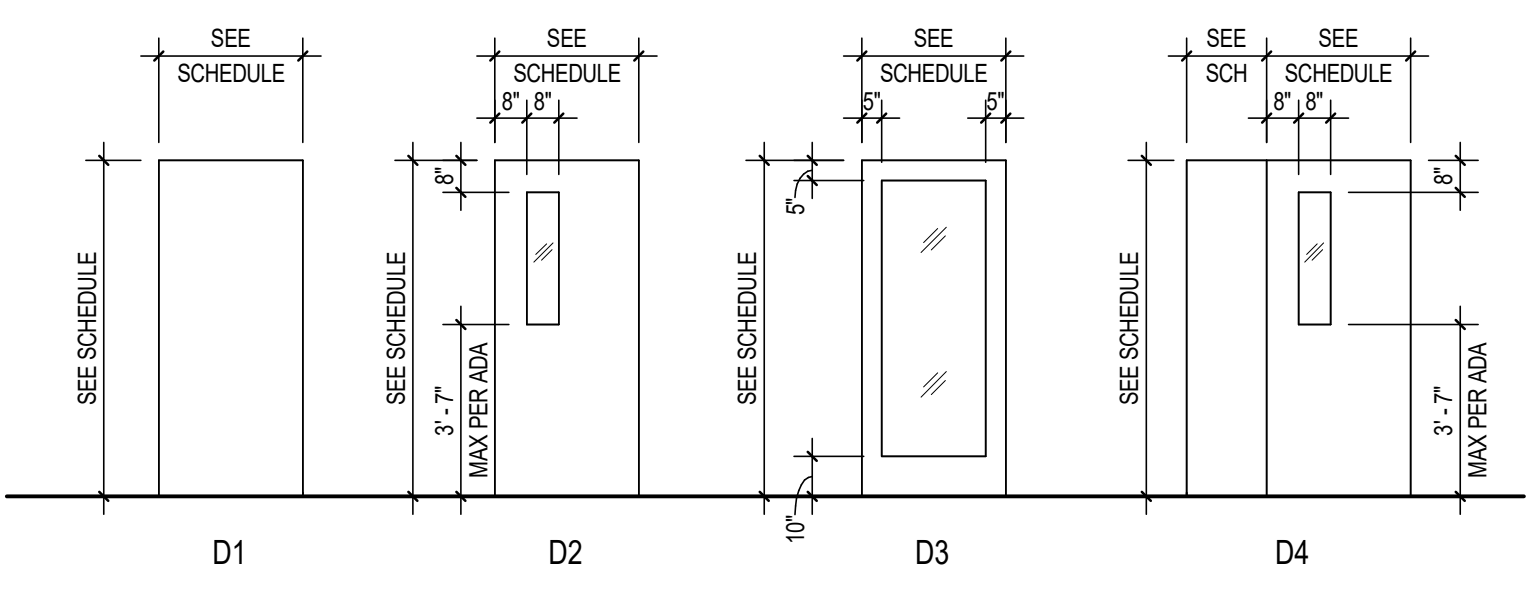
DRAWING TITLE:
CANOPY PLAN
AND DETAILS



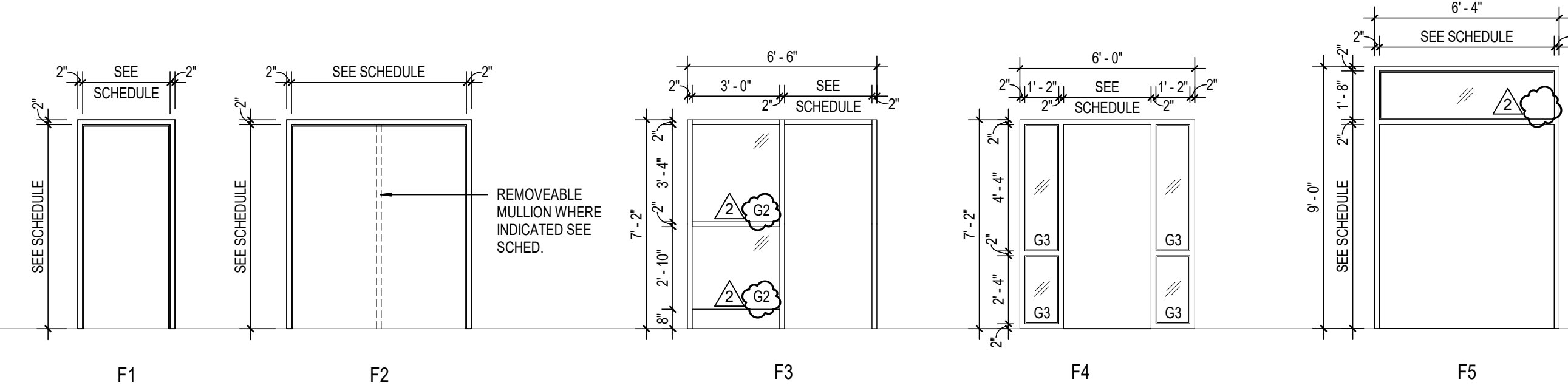
DRAWING NUMBER
A220

PROJECT NUMBER
2024062

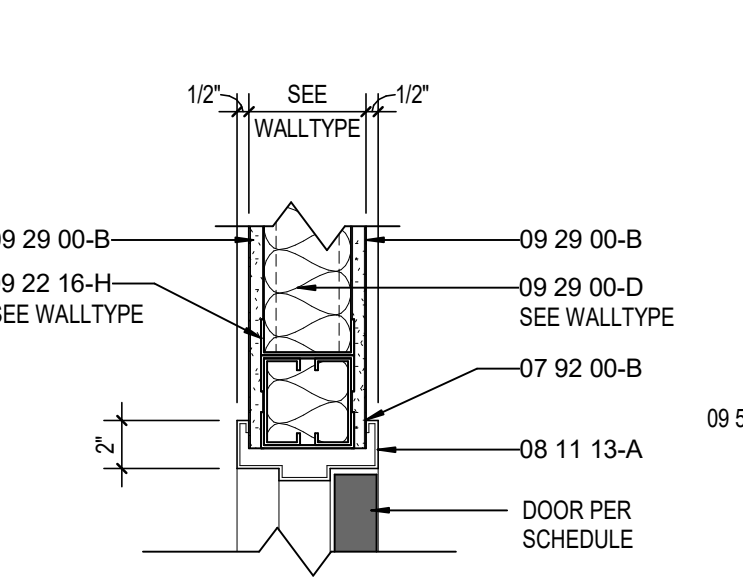
DOOR	SIZE				FRAME												STC Rating	REMARKS
	MARK	WIDTH	HEIGHT	THICKNESS	MATERIAL	FINISH	ELEVATION	GLASS	FRAME MATERIAL	FINISH	ELEVATION	GLASS	HEAD	AMB	ISILL			
C102A	SGL	3'-0"	6'-10"	1.34"	WD	ST	D1	-	HM	PT	F2	-	H1	J1	S2	-	6	
C102A2	PAIR	3'-0"	7'-0"	1.34"	WD	ST	D1	-	HM	PT	F2	-	H1	J1	S2	-	6	
C102B	SGL	3'-0"	6'-10"	1.34"	WD	ST	D2	G2	EX	EX	EX	EX	EX	EX	EX	S2	-	6
C122	SGL	3'-0"	6'-10"	1.34"	WD	ST	D2	G2	EX	EX	EX	EX	EX	EX	EX	S2	-	6
C123A	SGL	3'-0"	6'-10"	1.34"	AL	AN	D3	G1	AL	AN	F1	-	H4	AJ	S1	-	3,8,4	
C125	SGL	3'-0"	6'-10"	1.34"	WD	ST	D1	-	EX	EX	EX	EX	EX	EX	EX	S2	-	6
C126	SGL	3'-0"	6'-10"	1.34"	WD	ST	D1	-	EX	EX	EX	EX	EX	EX	EX	S2	-	6
C127A	SGL	3'-0"	6'-10"	1.34"	WD	ST	D2	G2	EX	EX	EX	EX	EX	EX	EX	S2	-	6
C128A	SGL	3'-0"	6'-10"	1.34"	WD	ST	D2	G2	EX	EX	EX	EX	EX	EX	EX	S2	-	6
C128B	SGL	3'-0"	6'-10"	1.34"	WD	ST	D2	G2	EX	EX	EX	EX	EX	EX	EX	S2	-	6
C129A	EX	3'-0"	7'-0"	1.34"	EX	EX	D3	G2	EX	EX	EX	EX	EX	EX	EX	S2	-	4
C132A	SGL	3'-0"	7'-0"	1.34"	HM	ST	D3	G2	HM	PT	F3	G2	H1	J1	S2	-	-	
C132B	SGL	3'-0"	7'-0"	1.34"	HM	ST	D3	G2	HM	PT	F3	G2	H1	J1	S2	-	-	
C132C	SGL	3'-0"	7'-0"	1.34"	HM	ST	D3	G2	HM	PT	F3	G2	H1	J1	S2	-	-	
C132E	SGL	3'-0"	7'-0"	1.34"	HM	ST	D3	G2	HM	PT	F3	G2	H1	J1	S2	-	-	
C132F	SGL	3'-0"	7'-0"	1.34"	HM	ST	D3	G2	HM	PT	F3	G2	H1	J1	S2	-	-	
C132G	SGL	3'-0"	7'-0"	1.34"	HM	ST	D3	G2	HM	PT	F3	G2	H1	J1	S2	-	-	
C132H	SGL	3'-0"	7'-0"	1.34"	HM	ST	D1	-	HM	PT	F1	-	H1	J1	S2	-	-	
C132K	SGL	2'-6"	7'-0"	1.34"	WD	ST	D1	-	HM	PT	F1	-	H1	J1	S2	-	-	
C132L	SGL	2'-6"	7'-0"	1.34"	WD	ST	D1	-	HM	PT	F1	-	H1	J1	S2	-	-	
C132M	SGL	3'-0"	7'-0"	1.34"	WD	ST	D1	-	HM	PT	F1	-	H1	J1	S2	-	-	
C132N	UNED PAR	4'-8"	7'-0"	1.34"	WD	ST	D4	G2	HM	PT	F1	-	H1	J1	S2	-	5	
C132P	SGL	3'-0"	6'-10"	1.34"	WD	ST	D1	-	EX	EX	EX	EX	EX	EX	EX	S2	-	-
C134A	PAIR	3'-0"	7'-0"	1.34"	WD	ST	D1	-	EX	EX	EX	-	EX	EX	EX	-	-	
C134B	SGL	3'-0"	7'-0"	1.34"	WD	ST	D1	-	PT	F1	-	-	H1	J1	S2	-	-	
C135	SGL	3'-0"	6'-10"	1.34"	WD	ST	D1	-	EX	EX	EX	EX	EX	EX	EX	S2	-	-
C136	SGL	3'-0"	6'-10"	1.34"	WD	ST	D1	-	EX	EX	EX	EX	EX	EX	EX	S2	-	-
C137	SGL	3'-0"	6'-10"	1.34"	WD	ST	D1	-	HM	PT	F1	-	H1	J1	S2	-	7	
C140A	PAIR	3'-0"	7'-0"	1.34"	AL	AN	D3	G2	AL	AN	F5	G2	H2	J2	S1	-	1,8,4	
C140B	PAIR	3'-0"	7'-0"	1.34"	AL	AN	D3	G1	AL	AN	F5	G1	H3	J3	S1	-	1,8,4	
C141	SGL	3'-0"	6'-10"	1.34"	WD	ST	D1	-	EX	EX	EX	EX	EX	EX	EX	S2	-	6
C142A	SGL	3'-0"	7'-0"	1.34"	HM	PT	D3	G3	HM	PT	F4	G3	H1	J1	S2	-	1,8,4	
C142B	SGL	3'-0"	7'-0"	1.34"	HM	PT	D3	G2	EX	EX	EX	-	EX	EX	EX	-	-	
C143A	SGL	3'-0"	7'-0"	1.34"	WD	ST	D2	G2	HM	PT	F1	-	H1	J1	S2	-	-	
C145A	SGL	3'-0"	7'-0"	1.34"	WD	ST	D2	G2	HM	PT	F1	-	H1	J1	S2	-	-	
C145C	SGL	3'-0"	6'-10"	1.34"	WD	ST	D2	G2	EX	EX	EX	EX	EX	EX	EX	S2	-	-



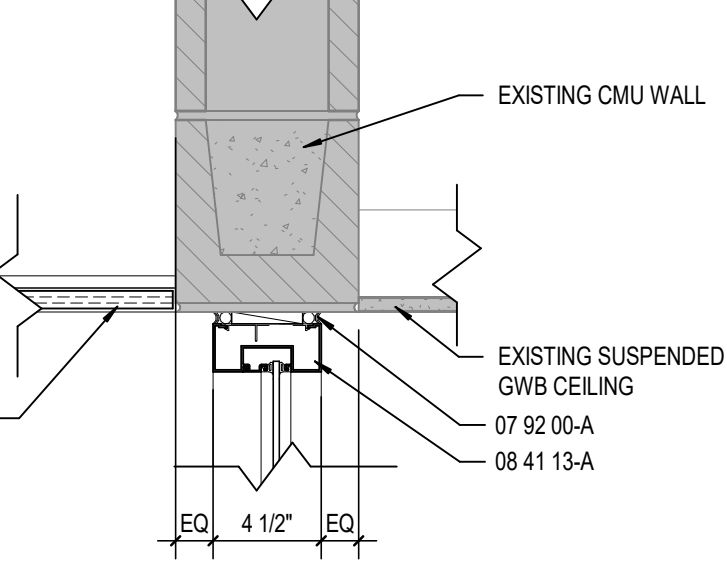
DOOR ELEVATIONS
SCALE: 1/4" = 1'-0"



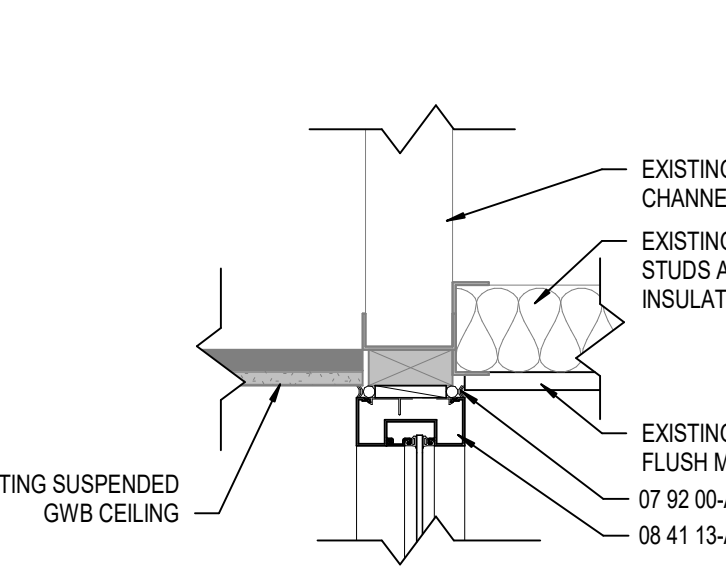
FRAME ELEVATIONS
SCALE: 1/4" = 1'-0"



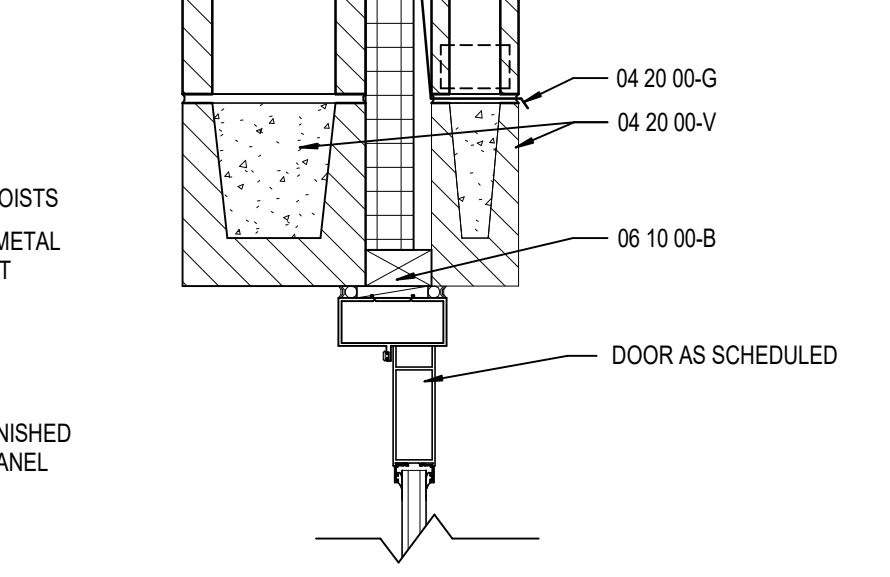
HEAD DETAIL H1
SCALE: 1 1/2" = 1'-0"



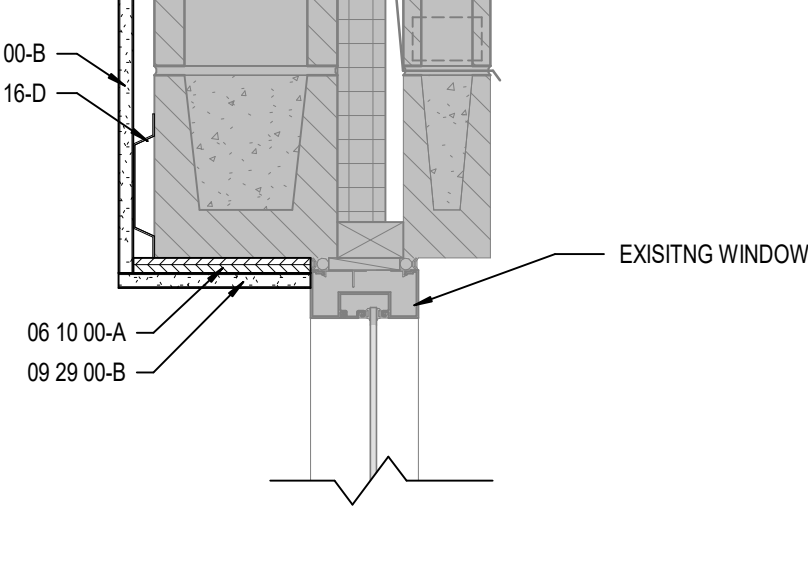
HEAD DETAIL H2
SCALE: 1 1/2" = 1'-0"



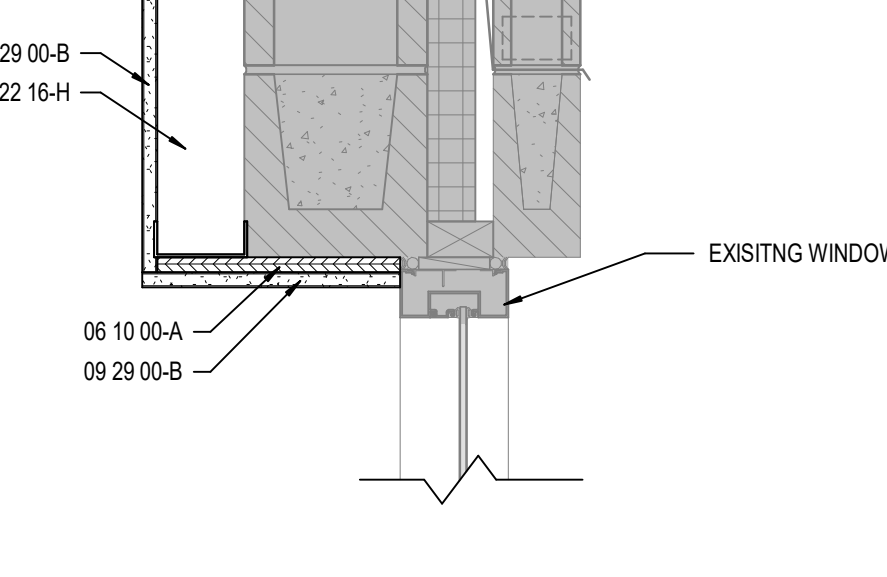
HEAD DETAIL H3
SCALE: 1 1/2" = 1'-0"



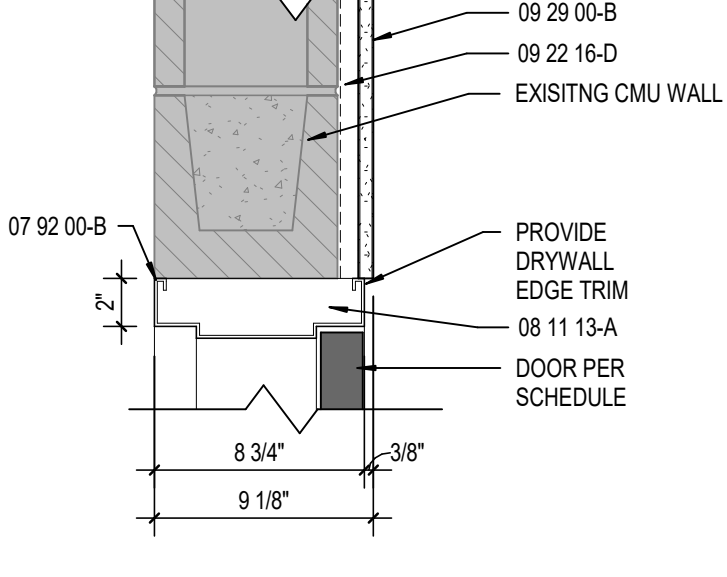
HEAD DETAIL H4 - EXTERIOR
SCALE: 1 1/2" = 1'-0"



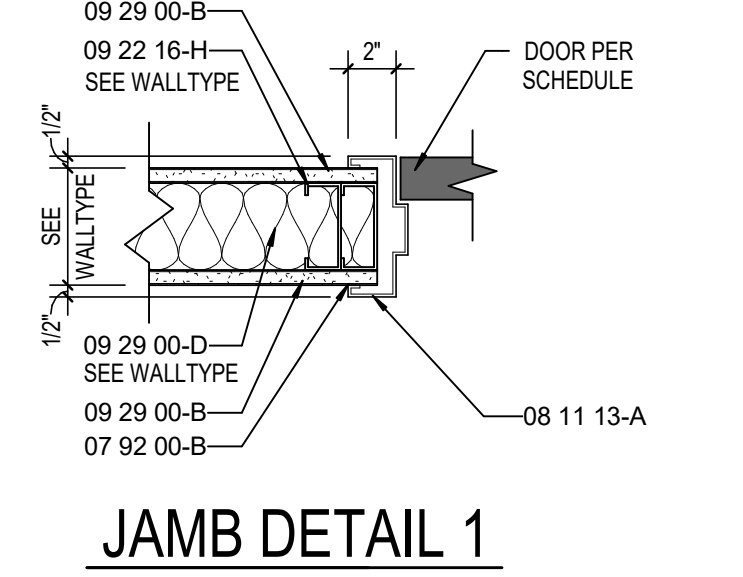
WINDOW HEAD DETAIL H5
SCALE: 1 1/2" = 1'-0"



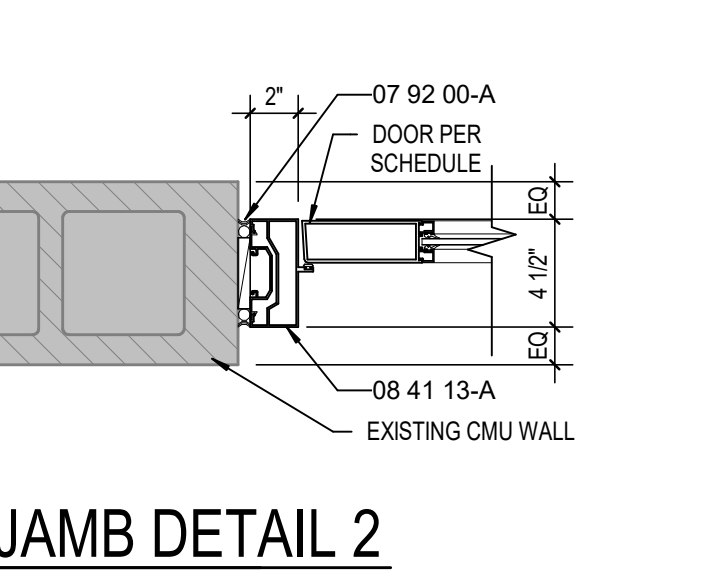
WINDOW HEAD DETAIL H6
SCALE: 1 1/2" = 1'-0"



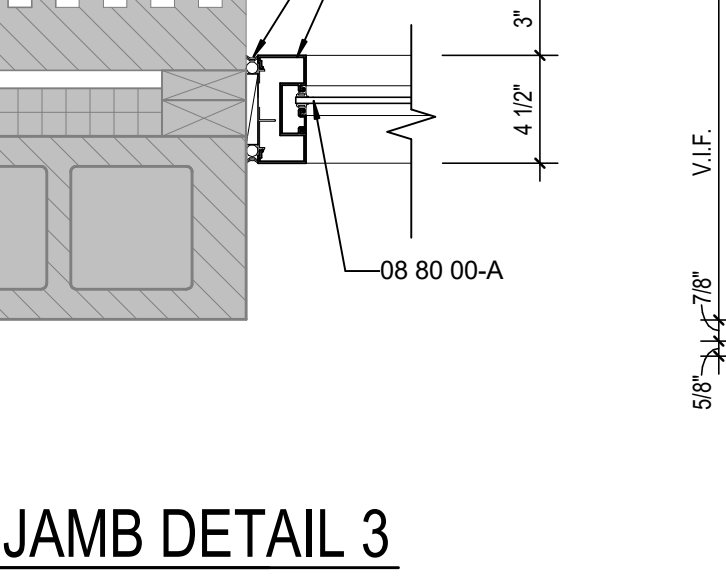
HEAD DETAIL H7
SCALE: 1 1/2" = 1'-0"



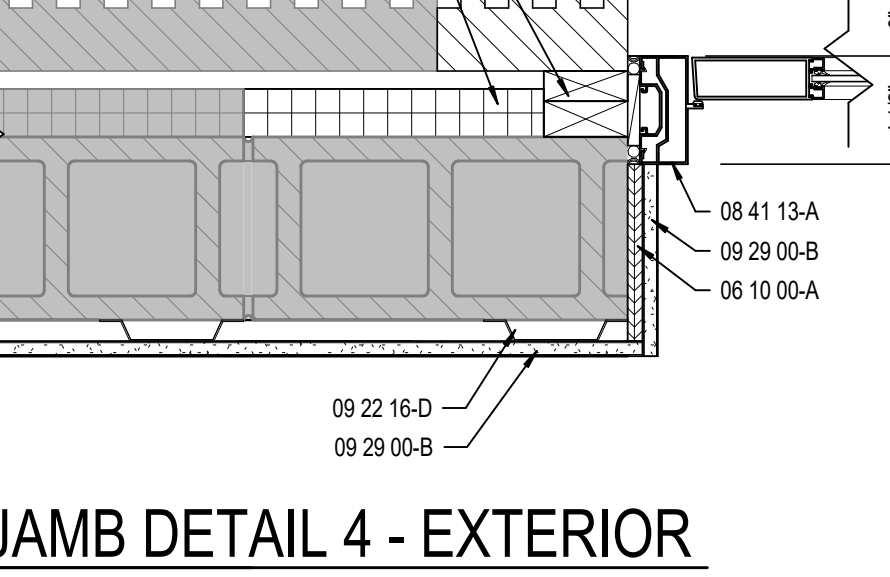
JAMB DETAIL 1
SCALE: 1 1/2" = 1'-0"



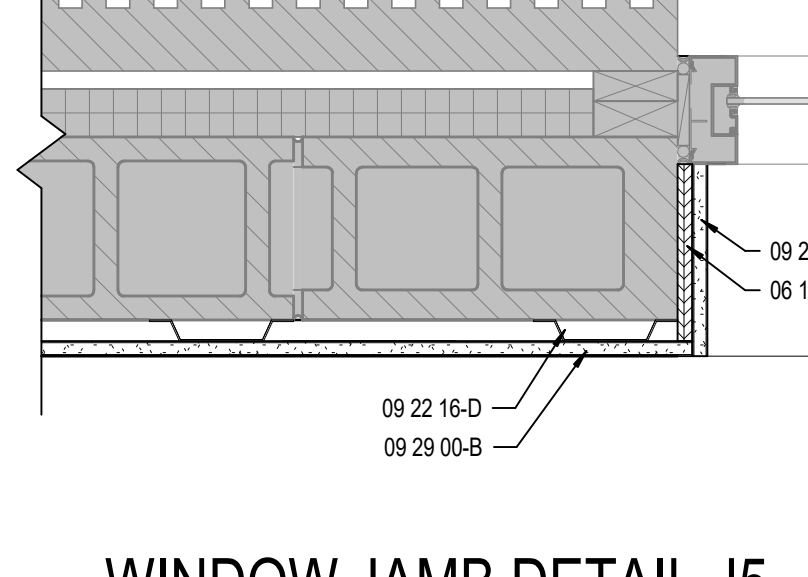
JAMB DETAIL 2
SCALE: 1 1/2" = 1'-0"



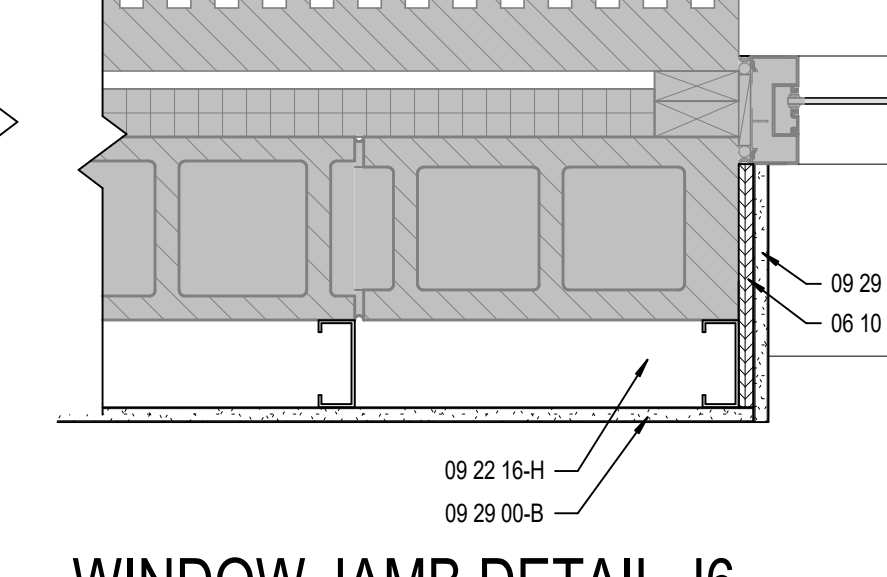
JAMB DETAIL 3
SCALE: 1 1/2" = 1'-0"



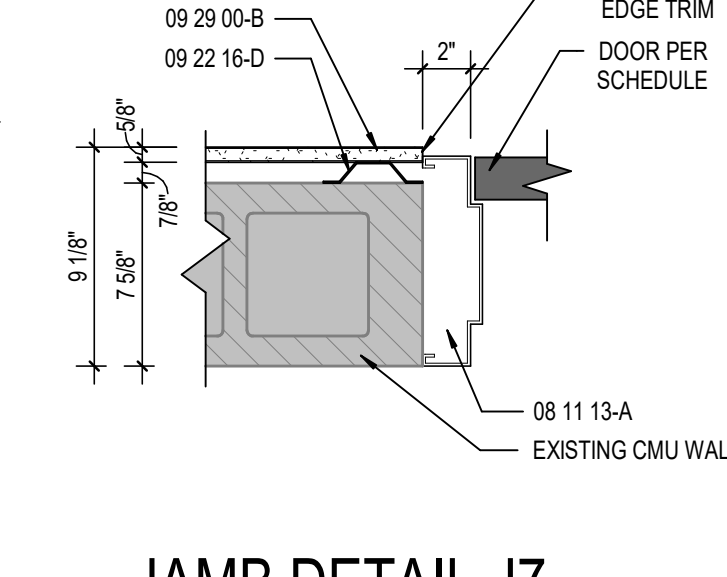
JAMB DETAIL 4 - EXTERIOR
SCALE: 1 1/2" = 1'-0"



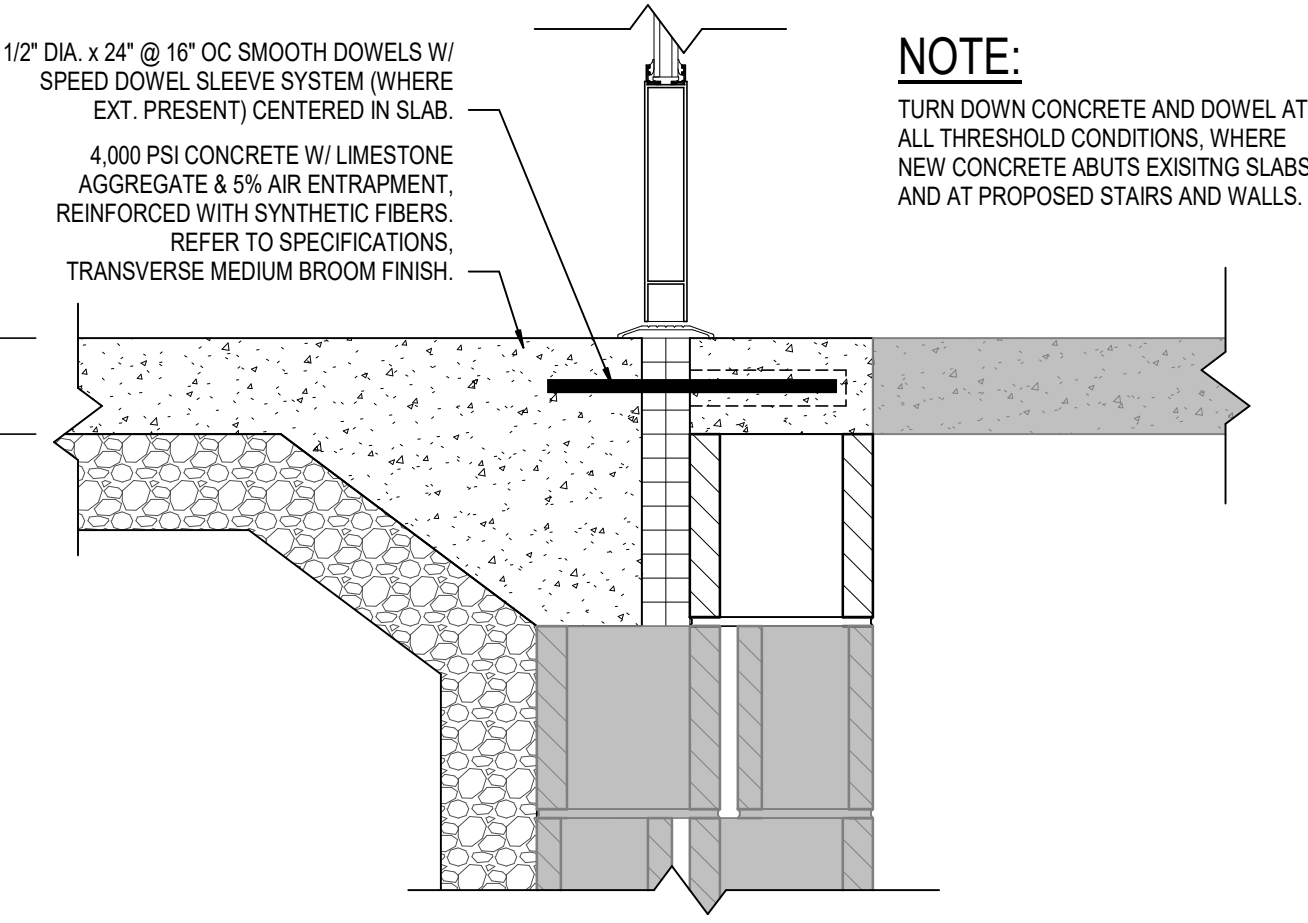
WINDOW JAMB DETAIL J5
SCALE: 1 1/2" = 1'-0"



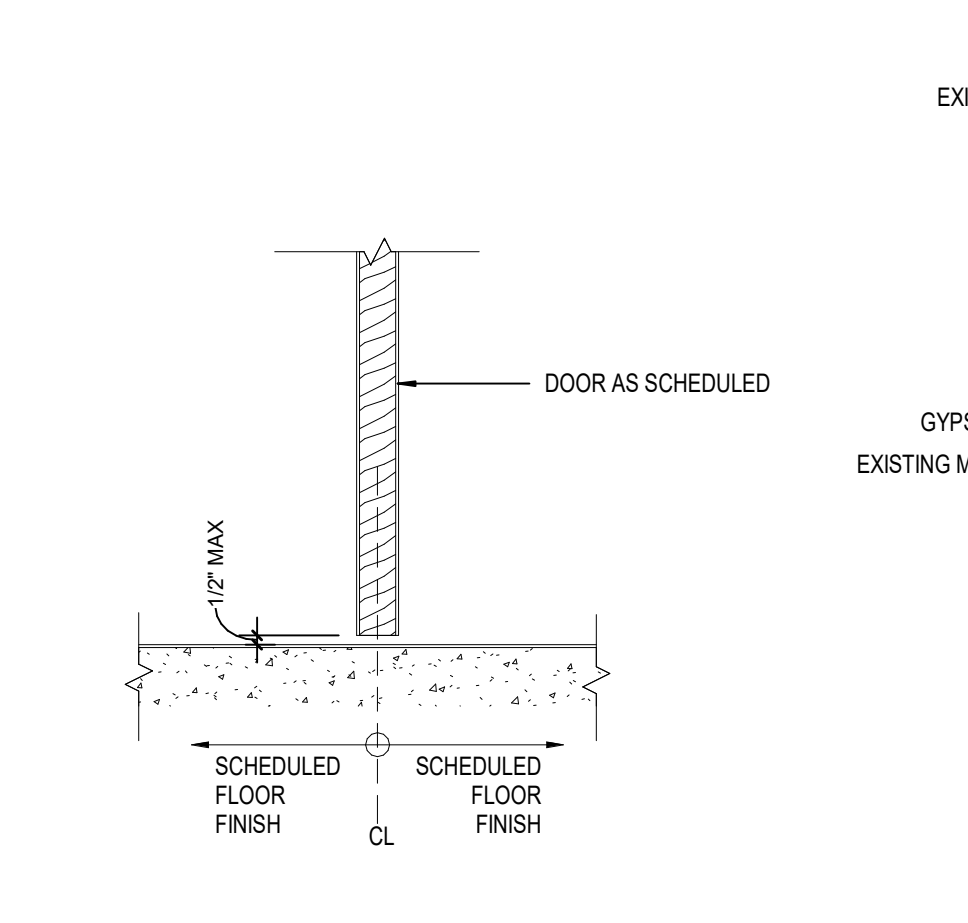
WINDOW JAMB DETAIL J6
SCALE: 1 1/2" = 1'-0"



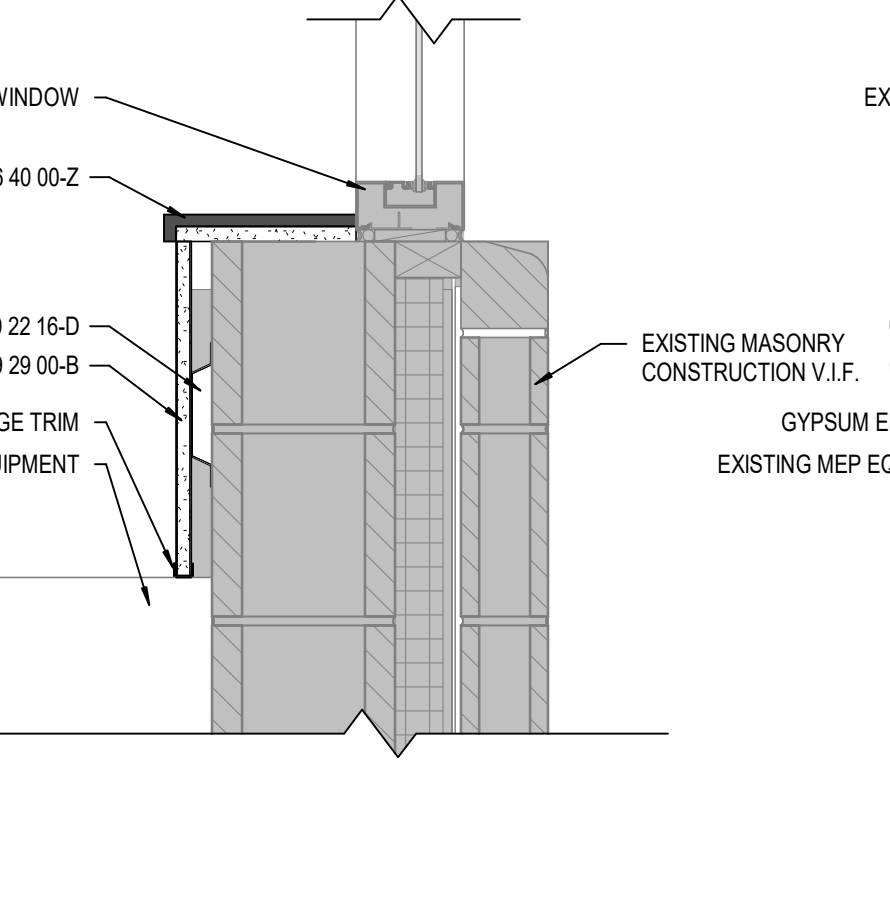
JAMB DETAIL J7
SCALE: 1 1/2" = 1'-0"



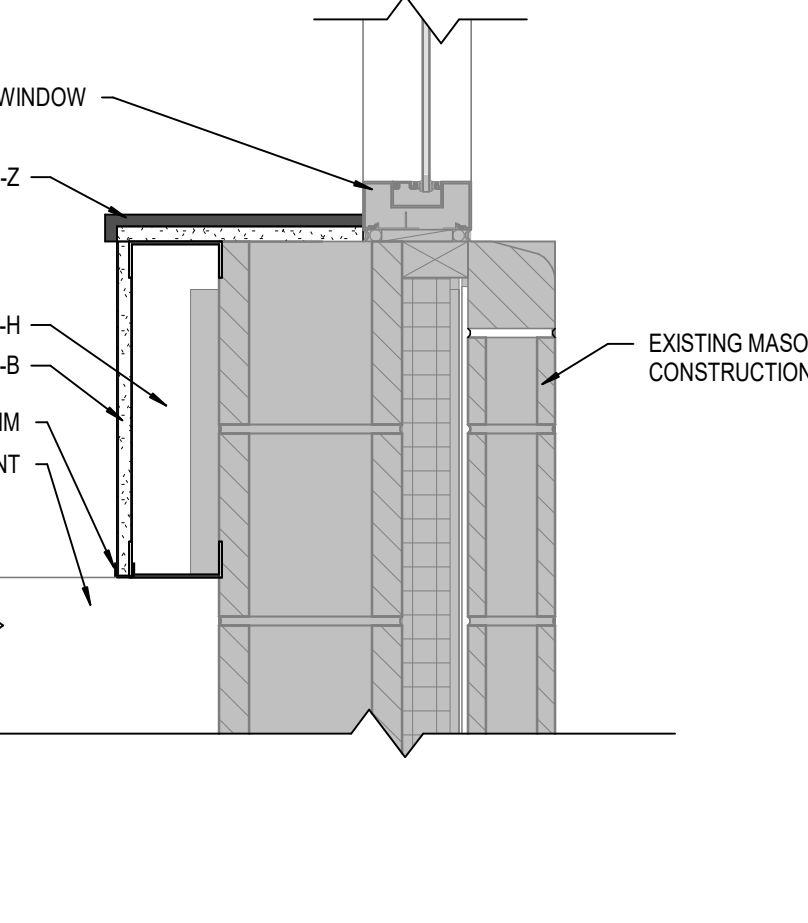
EXTERIOR DOOR THRESHOLD - S1
SCALE: 1 1/2" = 1'-0"



INTERIOR DOOR THRESHOLD - S2
SCALE: 1 1/2" = 1'-0"



WINDOW SILL - S3
SCALE: 1 1/2" = 1'-0"



WINDOW SILL - S4
SCALE: 1 1/2" = 1'-0"

GLASS SCHEDULE

- G1 1" THICK TEMPERED, LOW E, INSULATING GLAZING WITH 2 PANES 1/4" GLASS AND 1/2" AIRSPACE
- G2 3/16" LAMINATED CLEAR GLASS
- G3 3/8" SECURITY GLAZING

ABBREVIATIONS LEGEND

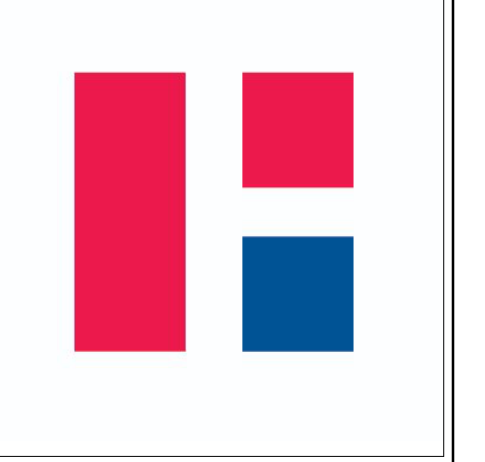
- AL = ALUMINUM
- AN = ANODIZED
- BL = BORROWED LITE
- GHM = GALVANNEALED HOLLOW METAL
- GL = GLASS
- HM = HOLLOW METAL
- HM PT = PAINT
- ST = STAIN
- SS = STAINLESS STEEL
- STL = STEEL
- WD = WOOD
- SAM = 60 MINUTE ASSEMBLY RATING
- * = SEE REMARKS COLUMN FOR NOTES
- MSDA = METAL SOUND DOOR ASSEMBLY
- AC = ACOUSTIC FLUSH WOOD DOOR MFR.

GENERAL DOOR NOTES

- THESE GENERAL NOTES APPLY TO THE DOOR SCHEDULE.
- DOOR AND FRAME NUMBERS CORRESPOND TO RESPECTIVE ROOM NUMBER. IN ROOMS WITH MULTIPLE OPENINGS, A NUMERICAL SUFFIX HAS BEEN ADDED TO DOOR NUMBERS.
- VERTICAL FRAMING MEMBERS AT ALL DOOR FRAMES SHALL EXTEND TO STRUCTURE ABOVE.
- UNDERCUT ALL DOORS AS REQUIRED BY FINAL FINISH.
- PROVIDE CONTINUOUS SEALANT BETWEEN HOLLOW METAL FRAME PERIMETERS AND SURROUNDING WALL CONSTRUCTION.
- PROVIDE CONTINUOUS SEALANT BETWEEN INTERIOR AND EXTERIOR WINDOW, CURTAINWALL AND STOREFRONT FRAME PERIMETERS AND SURROUNDING CONSTRUCTION UNLESS NOTED OTHERWISE.
- GROUT FULL HOLLOW METAL FRAMES IN MASONRY CONSTRUCTION.
- SPOT GROUT HOLLOW METAL FRAMES IN GYPSUM WALLS.
- WHERE A FIRE RATING IS INDICATED ON THE DOOR SCHEDULE, HARDWARE AND DOOR ASSEMBLY COMPONENTS SHALL MEET THE REQUIREMENTS OF THAT LABEL.
- WHERE AN STC RATING IS INDICATED ON THE DOOR SCHEDULE, HARDWARE AND DOOR ASSEMBLY COMPONENTS SHALL MEET THE REQUIREMENTS OF THAT LABEL.
- INSTALL DOOR GLASS USING WET GLAZING METHOD.
- ALL LITELS ABOVE EXTERIOR OPENINGS SHALL BE GALVANIZED.
- REFER TO SHEETS AXXX & AXXX FOR ADDITIONAL DOOR, FRAME AND BORROWED LITE ELEVATIONS.
- COORDINATE THROAT OPENINGS WITH WALL WIDTH FOR ALL WRAP AROUND FRAMES.
- SCHEDULED HARDWARE FOR ALUMINUM DOORS SHALL BE PROVIDED BY HARDWARE SUPPLIER AND INSTALLED BY ALUMINUM SUPPLIER. ALUMINUM DOORS TO BE PREPARED BY ALUMINUM DOOR SUPPLIER IN ACCORDANCE WITH THE SCHEDULED HARDWARE.
- ALL NEW HOLLOW METAL DOORS, FRAMES AND BORROWED LITE FRAMES TO BE PAINTED AS INDICATED ON THE A600 SERIES FINISH PLANS. SEE FINISH PLANS FOR WOOD DOOR FINISHES.
- PROVIDE SILENCERS ON ALL DOOR FRAMES.
- SEE STRUCTURAL DRAWINGS FOR REQUIREMENTS FOR MASONRY AND STEEL LITELS. PROVIDE STRUCTURAL STEEL LITELS AT OPENINGS OPENINGS WHERE INDICATED ON THE STRUCTURAL STEEL DRAWINGS IN LIEU OF MASONRY LITELS AS SHOWN IN THESE DETAILS.
- VERIFY ALL EXISTING CONDITIONS AND DIMENSIONS IN THE FIELD PRIOR TO FABRICATION OF DOORS AND FRAMES. BRING DISCREPANCIES TO THE ATTENTION OF THE ARCHITECT.

DOOR NOTES

- HANDICAP DOOR ACTUATOR.
- NOT USED.
- DOOR IS A PART OF THE PATIO ALTERNATE.
- CARD READER ACCESS.
- 3/4" ACTIVE LEAF 1 1/4" FIXED LEAF.
- DOOR IS A PART OF THE PROFESSIONAL DEVELOPMENT ALTERNATE.
- DOOR IS 8 3/4" DIMPLED FRAME IN EXISTING OPENING, VERIFY IN FIELD FOR SIZE.



SCSO
8831 Keystone Crossing, Indianapolis, IN 46240
317.846.7800 | csocncr.net
© 2014 SCSO Architects, Inc. All Rights Reserved.

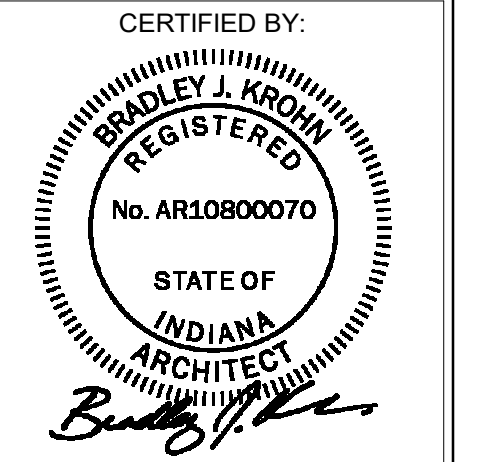
PROJECT:
HAMILTON SOUTHEASTERN SCHOOLS RENOVATIONS TO DURBIN LEARNING CENTER
18000 DURBIN RD, NOBLESVILLE, IN 46060

SCOPE DRAWINGS:
These drawings indicate the general scope of the project in terms of architectural design concept, the arrangement of structural, mechanical and electrical systems. The drawings are for informational purposes only and do not constitute a contract. On the basis of the general scope indicated on these drawings, the contractor shall furnish all items required for the proper execution and completion of the work.

REVISIONS:
1 ADDENDUM #1 01-16-25
2 ADDENDUM #2 01-22-25

ISSUE DATE DRAWN BY CHECKED BY
01/03/2025 KRK EHM

DRAWING TITLE:
DOOR AND FRAME SCHEDULE, ELEVATIONS, AND DETAILS



DRAWING NUMBER
A501

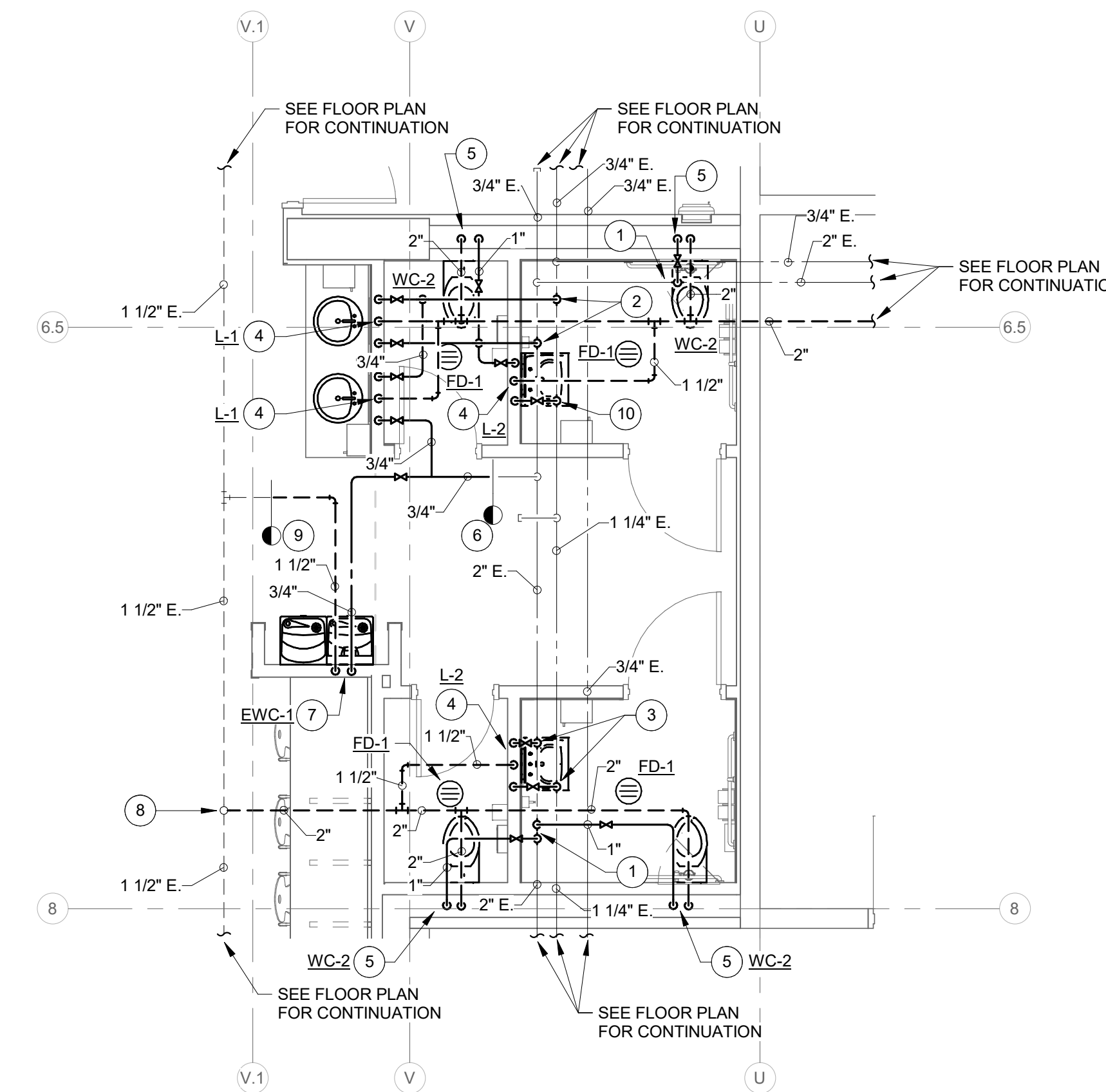
PROJECT NUMBER
2024062

RENOVATION LEGEND:

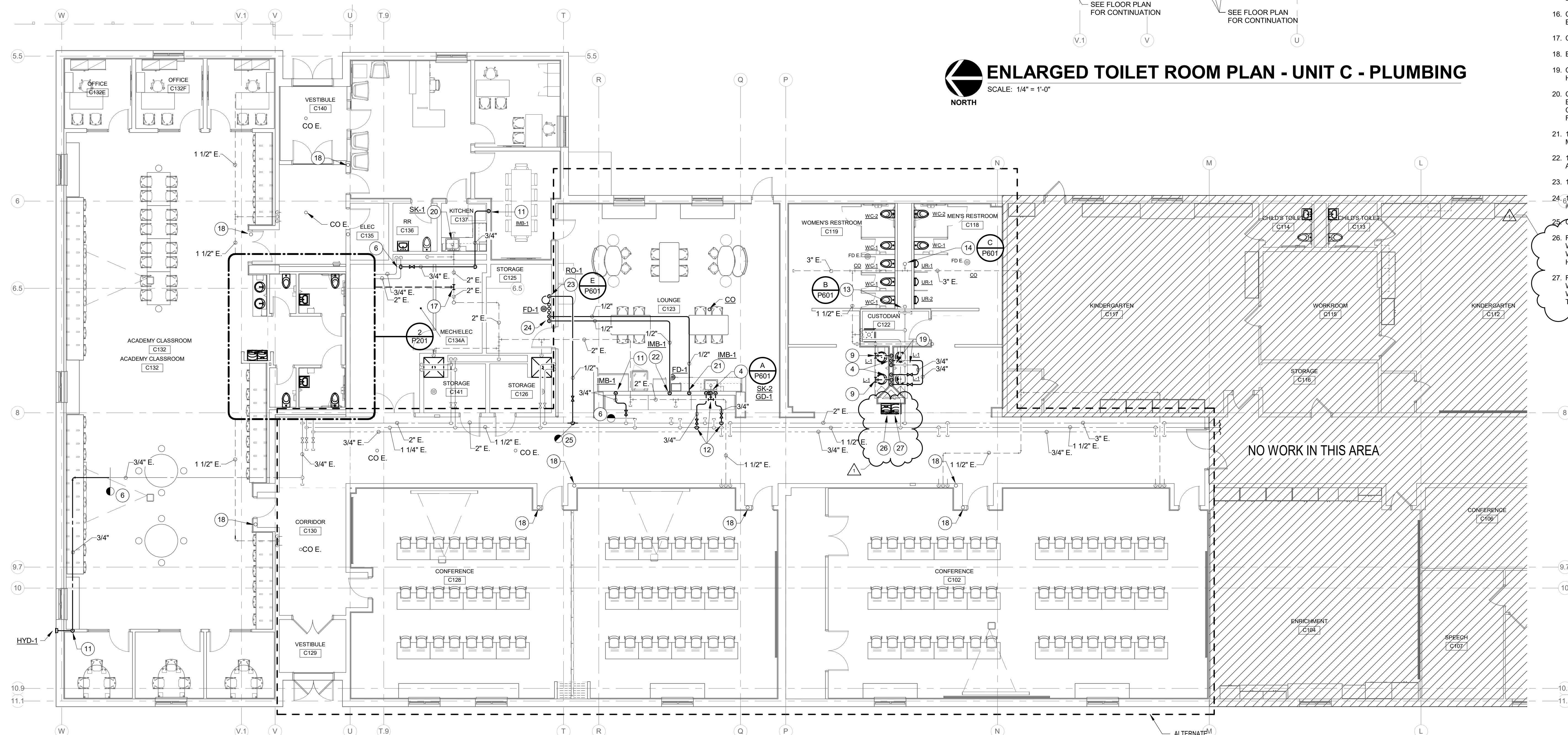
- WORK TO BE INSTALLED
- WORK TO REMAIN

GENERAL NOTES:

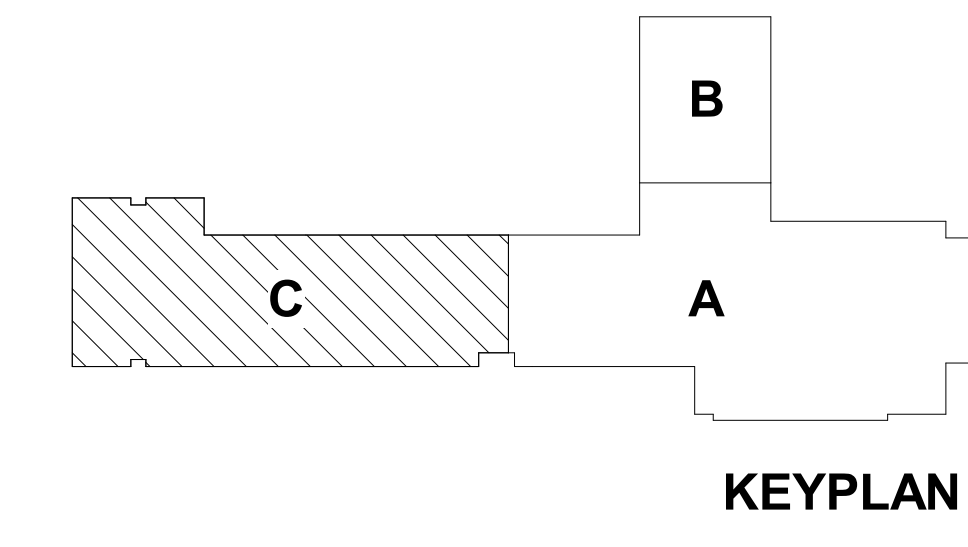
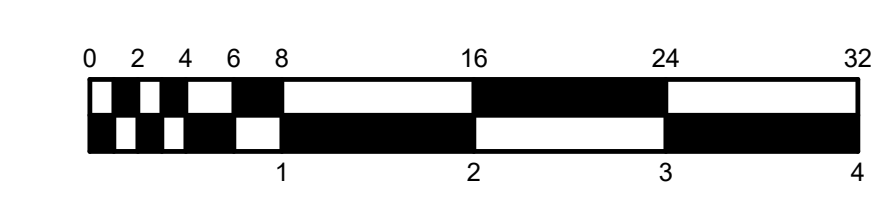
1. REFER TO SHEET PM001 FOR ADDITIONAL GENERAL NOTES.
- # PLAN NOTES:**
 1. CONNECT 1" COLD WATER TO EXISTING 2" COLD WATER PIPING.
 2. CONNECT 3/4" HOT WATER AND 1 1/2" COLD WATER TO EXISTING 1 1/4" HOT WATER AND 2" COLD WATER PIPING.
 3. CONNECT 3/4" HOT WATER AND 3/4" COLD WATER TO EXISTING 1 1/4" HOT WATER AND 2" COLD WATER PIPING.
 4. 3/4" HOT WATER, 3/4" COLD WATER DOWN, 1 1/2" WASTE DOWN, 1 1/2" VENT UP.
 5. 1" COLD WATER DOWN, 4" WASTE DOWN, 2" VENT UP.
 6. CONNECT 3/4" COLD WATER TO EXISTING 3/4" COLD WATER PIPING.
 7. 3/4" COLD WATER DOWN, 1 1/2" WASTE DOWN, 1 1/2" VENT UP.
 8. CONNECT 2" VENT TO EXISTING 3" VENT THRU ROOF.
 9. CONNECT 1 1/2" VENT TO EXISTING 1 1/2" VENT PIPING.
 10. CONNECT 3/4" HOT WATER TO EXISTING 1 1/4" HOT WATER PIPING.
 11. 3/4" COLD WATER DOWN.
 12. CONNECT 3/4" HOT WATER AND 3/4" COLD WATER TO EXISTING 1 1/2" HOT WATER AND 2" COLD WATER PIPING. CONNECT 1 1/2" VENT PIPING TO EXISTING 1 1/2" VENT PIPING.
 13. CONNECT 2 1/2" COLD WATER HEADER TO EXISTING 2 1/2" COLD WATER RISER IN CHASE.
 14. CONNECT 4" WASTE PIPING AND 4" VENT PIPING TO EXISTING 4" WASTE AT FLOOR AND 4" VENT THRU ROOF.
 15. REMOVE PLUMBING FIXTURE. REMOVE WATER AND WASTE PIPING BACK TO ROUGH-IN AT WALL AND CAP FOR FUTURE CONNECTION.
 16. CONNECT 3/4" HOT WATER AND 3/4" HOT WATER RETURN PIPING TO EXISTING 3/4" HOT AND 3/4" HOT WATER RETURN PIPING.
 17. CONNECT 2" VENT PIPING TO EXISTING 2" VENT PIPING.
 18. EXISTING BUILDING VACUUM SYSTEM OUTLET ABANDONED IN PLACE.
 19. CONNECT 3/4" HOT WATER AND 3/4" COLD WATER TO EXISTING 3/4" HOT WATER AND 3/4" COLD WATER PIPING.
 20. CONNECT 1/2" HOT WATER AND 1/2" COLD WATER SUPPLY TO EXISTING HOT WATER AND COLD WATER ROUGH-IN AT WALL. CONNECT 1 1/2" WASTE FROM SINK TO EXISTING 1 1/2" WASTE PIPING ROUGH-IN AT WALL.
 21. 1/2" RO WATER DOWN TO COFFEE MAKER BOX. MOUNT COFFEE MAKER BOX AT 12" ABOVE THE COUNTERTOP.
 22. 1/2" RO WATER DOWN TO ICE MAKER BOX. MOUNT ICE MACHINE BOX AT 12" ABOVE FINISH FLOOR.
 23. 1/2" COLD WATER DOWN TO RO UNIT.
 24. 1/2" RO SUPPLY TO COFFEE MAKER AND 1/2" RO SUPPLY TO ICE MACHINE FROM RO UNIT.
 25. CONNECT 1/2" COLD WATER TO EXISTING 2" COLD WATER PIPING.
 26. REMOVE AND REPLACE WATER COOLER. CONNECT WATER AND WASTE TO EXISTING WATER AND WASTE ROUGH-INS AT WALL. WATER COOLER TO BE SIMILAR TO ELKAY #ZSS8P. MOUNTING HEIGHT TO BE 36" TO BUBBLER.
 27. REMOVE AND REPLACE WATER COOLER. CONNECT WATER AND WASTE TO EXISTING WATER AND WASTE ROUGH-INS AT WALL. WATER COOLER TO BE SIMILAR TO ELKAY #ZSS8S. MOUNTING HEIGHT TO BE 42" TO BUBBLER.



ENLARGED TOILET ROOM PLAN - UNIT C - PLUMBING
SCALE: 1/4" = 1'-0"
NORTH



FLOOR PLAN - UNIT C - PLUMBING
SCALE: 1/8" = 1'-0"
NORTH



8831 Keystone Crossing, Indianapolis, IN 46240
317.846.7800 | ccsinc.net
© 2010 CSO Architects, Inc. All Rights Reserved.

D.S.A. #24083

RE Dimond and Associates, Inc.
Consulting Engineers
100 North Central Avenue
Indianapolis, IN 46204
Phone: (317) 634-4472
Fax: (317) 638-6725

PROJECT:
**HAMILTON SOUTHEASTERN SCHOOLS
RENOVATIONS TO
DURBIN LEARNING CENTER**
18000 DURBIN RD, NOBLESVILLE, IN 46060

SCOPE DRAWINGS:
These drawings indicate the general scope of the project. The drawings are not necessarily indicative of the actual work required for the performance and completion of the project. On the basis of the general scope indicated on drawings, the contractor shall furnish all items required for the proper execution and completion of the work.

REVISIONS:

1	ADDENDUM #2	01/22/2025
---	-------------	------------

ISSUE DATE	DRAWN BY	CHECKED BY
1/23/2025	TJG	DED

DRAWING TITLE:
**FLOOR PLAN -
UNIT C -
PLUMBING**

CERTIFIED BY:

Michael J. East
1/23/2025

DRAWING NUMBER
P201

PROJECT NUMBER
2024062

DEFINITIONS/ACRONYMS

- INSTALL - TO SUPPLY ALL LABOR, TOOLS AND INCIDENTAL MATERIALS NECESSARY TO HANDLE, STORE, MOUNT, TERMINATE, PROGRAM, CONFIGURE AND ADJUST PRODUCT AS NECESSARY TO FULFILL PROJECT REQUIREMENTS.
- FURNISH - TO SUPPLY THE SPECIFIED LABOR OR SPECIFIED PRODUCT, INCLUDING ALL ASSOCIATED SHIPPING, STORAGE, AND WARRANTY EXPENSES.
- PROVIDE - TO FURNISH AND INSTALL, INCLUDING ALL NECESSARY ACCESSORIES, MISCELLANEOUS MATERIALS, AND LABOR NECESSARY TO RENDER THE RESPECTIVE SYSTEM FULLY OPERATIONAL.
- WORK - ANY AND ALL LABOR, MATERIALS, ACCESSORIES, SERVICES, ETC. NECESSARY TO FULFILL PROJECT REQUIREMENTS.
- PRIMARY BONDING BUSBAR: A BUSBAR PLACED IN A CONVENIENT AND ACCESSIBLE LOCATION AND BONDED BY MEANS OF THE TELECOMMUNICATIONS BONDING CONDUCTOR, TO THE BUILDINGS SERVICE EQUIPMENT (POWER) GROUND (FORMERLY KNOWN AS THE TELECOMMUNICATIONS MAIN GROUNDING BUSBAR).
- SECONDARY BONDING BUSBAR: A COMMON POINT OF CONNECTION FOR TELECOMMUNICATIONS SYSTEM AND EQUIPMENT BONDING TO GROUND AND LOCATED IN THE TELECOM ROOM (FORMERLY KNOWN AS THE TELECOMMUNICATIONS GROUNDING BUSBAR).
- PRIMARY PATHWAYS ARE THOSE SUPPORTING THE CABLE INFRASTRUCTURE FROM THE EQUIPMENT ROOMS / TELECOMMUNICATIONS ROOMS / TELECOMMUNICATIONS ENCLOSURES THROUGH THE CORRIDORS, TUNNELS AND CHASES TO THE SECONDARY PATHWAYS.
- SECONDARY PATHWAYS ARE THOSE SUPPORTING THE CABLING INFRASTRUCTURE FROM THE PRIMARY PATHWAYS TO THE TELECOMMUNICATIONS OUTLETS.
- AHJ - AUTHORITY HAVING JURISDICTION
- BAS - BUILDING AUTOMATION SYSTEM
- DAS - DISTRIBUTED ANTENNA SYSTEM
- DISPLAY - A DEVICE THAT SHOWS IMAGES, TEXT, OR OTHER CONTENT BY CONVERTING ANALOG OR DIGITAL SIGNALS INTO VISIBLE FORM.
- EAC - ELECTRONIC ACCESS CONTROL
- EF - ENTRANCE FACILITY
- EO - EQUIPMENT OUTLET
- ER - MAIN TELECOMMUNICATIONS EQUIPMENT ROOM
- FACP - FIRE ALARM CONTROL PANEL
- HC - HORIZONTAL CROSS-CONNECT
- HDMI - HIGH DEFINITION MULTIMEDIA INTERFACE
- HDPE - HIGH DENSITY POLYETHYLENE
- IC - INTERMEDIATE CROSS-CONNECT
- IDC - INSULATION DISPLACEMENT CONNECTOR
- IDS - INTRUSION DETECTION SYSTEM
- IOT - INTERNET OF THINGS
- IP - INTERNET PROTOCOL
- LAN - LOCAL AREA NETWORK
- LEC - LOCAL EXCHANGE CARRIER
- MC - MAIN CROSS-CONNECT
- MH - MAINTENANCE HOLE
- MPTL - MODULAR PLUG TERMINATED LINK
- OSP - OUTSIDE PLANT
- PBB - PRIMARY BONDING BUSBAR
- RF - RADIO FREQUENCY
- RFID - RADIO FREQUENCY IDENTIFICATION
- SBB - SECONDARY BONDING BUSBAR
- SSID - SERVICE SET IDENTIFIER
- STP - SHIELDED TWISTED PAIR
- SO - SERVICE OUTLET
- TCP - TRANSMISSION CONTROL PROTOCOL
- TE - TELECOMMUNICATIONS ENCLOSURE
- TO - TELECOMMUNICATIONS OUTLET
- TR - TELECOMMUNICATIONS ROOM
- UTP - UNSHELD TWISTED PAIR
- UON - UNLESS OTHERWISE NOTED
- VSS - VIDEO SURVEILLANCE SYSTEM
- WAN - WIDE AREA NETWORK
- WAP - WIRELESS ACCESS POINT
- WLAN - WIRELESS LOCAL AREA NETWORK

TELECOMMUNICATIONS DEVICES

- STANDARD TELECOM OUTLET. DATA. X = QUANTITY OF HORIZONTAL UTP CABLES PROVIDED TO TELECOM. ROOM. CABLE IS OWNER PROVIDED.
- TELECOM OUTLET IN SURFACE RACEWAY. CABLE IS OWNER PROVIDED.
- TELECOM OUTLET WITH HDMI, VGA, RCA, 3.5mm AUDIO. CABLE IS OWNER PROVIDED.
- TELECOM OUTLET WITH COAX. CABLE IS OWNER PROVIDED.
- STANDARD TELECOM OUTLET WITH LOCAL AV INPUT. TWO HORIZONTAL UTP CABLES TO TELECOM. ROOM IN ADDITION, (1) HDMI TO PROJECTOR/TV. CABLE IS OWNER PROVIDED.
- STANDARD TELECOM OUTLET. WALL MOUNTED TELEPHONE. ONE HORIZONTAL UTP CABLE TO TELECOM. ROOM. UON. INSTALL OUTLET @+ 48" UON. CABLE IS OWNER PROVIDED.
- FLOOR BOX. SPECIFIED IN DIVISION 26.
- TELEVISION SET. TWO HORIZONTAL UTP CABLES TO TELECOM. ROOM AND (1) HDMI TO LOCAL AV INPUT OUTLET UON. TV AND CABLE IS OWNER PROVIDED.
- VIDEO PROJECTOR. TWO HORIZONTAL UTP CABLES TO TELECOM. ROOM AND (1) HDMI TO LOCAL AV INPUT OUTLET. PROJECTOR AND CABLE IS OWNER PROVIDED.
- WIRELESS ACCESS POINT (WAP). TWO HORIZONTAL UTP CABLES TO TELECOM. ROOM. UON. WAP AND CABLE IS OWNER PROVIDED.
- VIDEO SURVEILLANCE CAMERA. ONE HORIZONTAL UTP CABLE TO TELECOM. ROOM. UON. CAMERA AND CABLE IS OWNER PROVIDED.
- EAC CARD READER. SEE DETAILS FOR PATHWAY AND CABLING REQUIREMENTS. PROVIDE COMPLETE.
- SPEAKER BY OWNER. PROVIDE OUTLET BOX AND CONDUIT WHERE INSTALLED EXPOSED WITH NO CONCEALED ACCESSIBLE CEILING.
- INTERCOMMUNICATIONS SYSTEM CALL-IN BUTTON. PROVIDE OUTLET BOX AND CONDUIT TO CEILING SPACE. DEVICE BY OWNER.
- VIDEO PHONE ENTRY STATIONS.
- VIDEO PHONE MASTER STATION.
- INTERCOMMUNICATIONS SYSTEM VOLUME CONTROL. PROVIDE COMPLETE.
- DOOR NUMBER. REFER TO ARCHITECTURAL DRAWINGS FOR MORE INFORMATION.

NOTES:

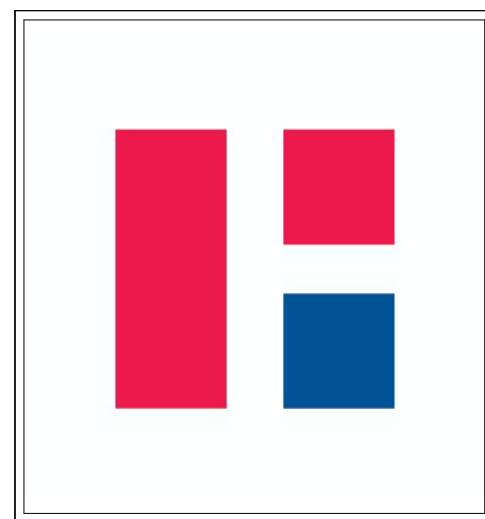
- SEE DETAILS FOR MORE WORK REQUIREMENTS.
- COORDINATE WITH ALL 'E'-SERIES DRAWINGS.

GENERAL NOTES - DEMOLITION:

- THE CONTRACT DOCUMENTS DO NOT PROPOSE TO SHOW ALL SYSTEMS, MATERIALS, OR EQUIPMENT EXISTING ON THE PROJECT THAT WILL REQUIRE DEMOLITION. DEMOLITION DRAWINGS ARE BASED ON PARTIAL FIELD OBSERVATION. REPORT DISCREPANCIES TO THE CONSULTANT BEFORE DISTURBING EXISTING INSTALLATION.
- REMOVE ALL ABANDONED CABLING AS DEFINED BY THE NEC.
- PROVIDE DEMOLITION REQUIRED FOR REMOVAL OF SYSTEMS AND EQUIPMENT MADE OBSOLETE BY THIS PROJECT AND PAST PROJECTS.
- IDENTIFY ITEMS TO BE SALVAGED WITH THE OWNER. PROVIDE NON-DESTRUCTIVE REMOVAL OF SYSTEMS, MATERIALS, AND EQUIPMENT FOR REUSE OR SALVAGE AS REQUIRED.
- REMOVAL ALL COMMUNICATIONS DEBRIS FROM SITE AND LEGALLY DISPOSE OF IT.
- RELOCATE EXISTING EQUIPMENT TO ACCOMMODATE CONSTRUCTION.
- CONTRACTOR UNDERSTANDS THAT ADJACENT AREAS NEED TO REMAIN IN OPERATION AND THAT SERVICES TO THESE AREAS NEED TO BE MAINTAINED.
- PROTECT EXISTING EQUIPMENT AND INSTALLATIONS INDICATED TO REMAIN. IF DAMAGED OR DISTURBED IN THE COURSE OF THE WORK, REMOVE DAMAGED PORTIONS AND INSTALL NEW PRODUCTS OF EQUAL CAPACITY, QUALITY, AND FUNCTIONALITY.
- CONTRACTOR SHALL BE RESPONSIBLE FOR MAINTAINING TELEPHONE, DATA, CENTRAL SOUND, SECURITY, AND ALARM SYSTEM SERVICES IN ALL EXISTING AREAS FOR DURATION OF PROJECT. CONTRACTOR SHALL COLLABORATE WITH OWNER'S TECHNOLOGY PERSONNEL AS NECESSARY AND PROVIDE TEMPORARY WIRING, CROSS-CONNECTS, TERMINATION DEVICES, AND LABOR TO MAINTAIN OPERATION ACCEPTABLE TO THE OWNER.
- PROVIDE AND MAINTAIN TEMPORARY PARTITIONS OR DUST BARRIERS ADEQUATE TO KEEP DIRT, DUST, NOISE, AND OTHER PARTICLES FROM BEING TRANSFERRED TO ADJACENT AREAS.
- CONTRACTOR SHALL PROVIDE ALL CUTTING AND PATCHING REQUIRED FOR REMOVAL OR RELOCATION OF EXISTING INSTALLATIONS.
- REMOVE ABANDONED CABLING AFTER OWNER'S SYSTEMS ARE CUT OVER TO THE NEW CABLING SYSTEM.
- REMOVE, STORE, PROTECT, CLEAN, REINSTALL, RECONNECT, AND MAKE OPERATION COMPONENTS INDICATED FOR RELOCATION/REINSTALLATION.
- REMOVE DIRT, DUST, DEBRIS, UNSALVAGEABLE AND NON-REUSABLE ITEMS, AND THE LIKE FROM THE PROJECT SITE DAILY. REFUSE SHALL NOT BE ALLOWED TO BLOCK, OR OTHERWISE IMPAIR, CIRCULATION IN CORRIDORS, STAIRS, SIDEWALKS, OR OTHER TRAFFIC AREAS.
- WHERE A DEVICE IS REMOVED FROM A WALL OR CEILING THAT IS TO REMAIN, PROVIDE A NEW BLANK COVERPLATE ON EXISTING DEVICE BOX. REMOVE ALL SURFACE RACEWAYS AND BOXES.

GENERAL NOTES - INSTALLATION:

- NOTHING SET FORTH IN THESE DRAWINGS SHALL RELEASE ANY CONTRACTOR FROM HIS RESPONSIBILITY TO PROVIDE APPROPRIATE QUANTITIES, FIELD MEASUREMENTS, DIMENSIONAL STABILITY, INSTALLATION, ANCHORAGE, AND COORDINATION WITH OTHER TRADES, OR RELEASE HIM FROM HIS RESPONSIBILITY TO IDENTIFY AND RESOLVE DEVIATIONS FROM THE REQUIREMENTS OF THE CONTRACT DOCUMENTS, OR FREE HIM OF HIS RESPONSIBILITY TO ALERT DESIGNER TO ERRORS OR OMISSIONS.
- CONTRACTOR SHALL UTILIZE THESE DRAWINGS IN CONJUNCTION WITH THE SPECIFICATIONS TO DETERMINE THE FULL SCOPE, INTENT, AND REQUIREMENTS OF THE PROJECT. SPECIFICATIONS AND DRAWINGS ARE INTENDED TO BE COMPLEMENTARY, NOT MUTUALLY EXCLUSIVE.
- EACH CONTRACTOR SHALL VERIFY IN THE FIELD ALL EXISTING APPLICABLE CONDITIONS.
- THOROUGHLY CLEAN AND DISPOSE OF TRASH AT THE END OF EACH WORK DAY. OWNER'S FACILITIES SHALL NOT BE USED FOR WASTE DISPOSAL.
- PROVIDE DUST PROTECTION FOR FINISHED WORK. SEAL EQUIPMENT BY PROVIDING DUST-PROOF BARRIERS AS REQUIRED. PROVIDE DUST PROTECTION WHEN WORKING IN EXISTING FACILITIES. SEAL OFF ALL WORK AREAS FROM REMAINDER OF THE EXISTING FACILITY TO RETAIN ALL CONSTRUCTION DIRT AND DUST. SEAL EXISTING DOORS WITH TAPE AND PROVIDE DUST PROOF BARRIERS AS REQUIRED.
- SEQUENCE ALL WORK TO PROVIDE FOR THE OWNER'S CONTINUED USE OF THE FACILITY.
- PROTECT ALL SURFACES AND FINISHES OF THE FACILITY. DAMAGED SURFACES OR FINISHES RESULTING FROM THE PERFORMANCE OF THE WORK OR NEGLIGENCE SHALL BE REPAIRED BY THE RESPONSIBLE CONTRACTOR AT NO COST TO THE OWNER. FINISHES AND SURFACES SHALL BE MADE TO MATCH THE EXISTING FINISHES OR SURFACES TO THE SATISFACTION OF THE OWNER AND ARCHITECT/CONSTRUCTION MANAGER.
- NOTIFY PAINTING CONTRACTOR AND GENERAL CONTRACTOR/CONSTRUCTION MANAGER THAT TELECOMMUNICATIONS CABLING CANNOT BE PAINTED. PROTECT ALL CABLES DURING PAINTING. REPLACE ALL CABLES THAT ARE PAINTED.
- CONDUIT RUNS SHALL HAVE NO MORE THAN 180 DEGREES OF BENDS WITHOUT AN APPROPRIATE PULL BOX. PROVIDE PULL BOXES AS FOLLOWS:
 - A. EVERY 180 DEGREES OF CONDUIT BEND
 - B. EVERY 100 FEET OF CONDUIT PATH
- ALL PULL BOXES AND JUNCTION BOXES SHALL BE INSTALLED IN ACCESSIBLE LOCATIONS.
- PROVIDE PATHWAYS FOR ALL TELECOMMUNICATIONS WORK. PATHWAY SHALL BE CLOSELY REVIEWED AND COORDINATED PRIOR TO INSTALLATION.
- PROVIDE COVER PLATES FOR ALL DEVICE, JUNCTION, AND PULL BOXES. COORDINATE MATERIAL AND FINISH OF ALL BLANK PLATES.
- WHERE DEVICE CONDUITS ARE SPECIFIED TO ABOVE ACCESSIBLE CEILING, THIS SHALL MEAN THAT CONDUITS SHALL BE STUBBED OUT INTO AN ACCESSIBLE CONCEALED CEILING CAVITY.
- PROVIDE PULL STRINGS IN ALL CONDUITS.
- DEVICE ROUGH-IN BOXES SHALL BE INSTALLED FLUSH IN WALLS AND CEILINGS. PATHWAYS SHALL BE INSTALLED CONCEALED.
- CABLING CANNOT BE EXPOSED TO PUBLIC VIEW. WHERE CABLING CANNOT BE CONCEALED INSIDE A WALL CAVITY OR CONCEALED IN AN ACCESSIBLE CEILING CAVITY, PROVIDE CABLING IN CONDUIT AS SPECIFIED SPACE. IN ADDITION, WHERE CEILING MOUNTED DEVICES ARE SHOWN IN A SPACE WITH NO CONCEALED ACCESSIBLE CEILING SPACE, PROVIDE SURFACE MOUNT BOX AND CONDUIT AS INDICATED.
- PROVIDE SLEEVED WALL/FLOOR PENETRATIONS AND FIRE STOPPING REQUIRED FOR CABLING.
- PROVIDE BUSHINGS AT EACH END OF THE CONDUIT. AT EACH PULL/JUNCTION/DEVICE BOX: ON CONDUIT STUBS; AND AT EACH LOCATION WHERE PULLING CABLE THROUGH THE CONDUIT MAY CAUSE THE CABLE TO RUB AGAINST THE END OF A CONDUIT OR ITS END FITTING.
- DEVICES TO BE INSTALLED AT CASEWORK LOCATIONS SHALL BE CLOSELY COORDINATED WITH THE CASEWORK TO ENSURE FUNCTIONAL CONNECTIVITY. COORDINATE WITH THE ARCHITECT AND THE EQUIPMENT AND CASEWORK DRAWINGS.
- DEVICES DESIGNATED AS COUNTER HEIGHT SHALL BE CLOSELY COORDINATED IN THE FIELD WITH ARCHITECT, CASEWORK AND FURNITURE VENDORS PRIOR TO ROUGH-IN.
- ROUGH-IN SHALL BE CLOSELY COORDINATED IN THE FIELD TO COMPLEMENT THE INTENDED FURNITURE PLAN AND SAFE AND EFFICIENT CONNECTIVITY OF COMMUNICATION TECHNOLOGY EQUIPMENT.
- TELECOMMUNICATIONS OUTLETS ARE INTENDED TO HAVE ADJACENT POWER OUTLETS TO SERVE THE SAME EQUIPMENT. CONTRACTOR SHALL COORDINATE THESE DEVICES TO BE LOCATED ADJACENT AND AT THE SAME HEIGHT.
- TELECOMMUNICATIONS OUTLETS MOUNTING HEIGHTS SHALL BE CONSISTENT WITH THE ELECTRICAL OUTLET MOUNTING HEIGHTS FOR THE FACILITY (NEW OR EXISTING) UNLESS OTHERWISE INDICATED ON DRAWINGS. CONTRACTOR SHALL SEEK THE DIRECTION OF THE DESIGNER SHOULD DISCREPANCIES BE FOUND WITHIN THE DRAWINGS, SPECIFICATIONS AND/OR ACTUAL FIELD CONDITIONS.
- LABEL ALL CONDUITS STUBBED INTO THE CEILING CAVITY WITH AN INDELIBLE MARKER INDICATING THE CONDUIT'S INTENDED USE. LABEL WITHIN 6 INCHES OF THE CONDUIT BUSHING. BELOW ARE EXAMPLES OF LABELS TO BE USED: "CAMERA," "COM," "DOOR," "SPKR," "MIC," "CLOCK," "VOL," "PANEL," "WAP," "DATA," "PHONE," "COM," "RF," "VP," "INPUT," ETC.
- PROVIDE WEATHERPROOF OUTLET IN ALL HARSH ENVIRONMENTS (I.E. OUTDOORS, POOLS, MECHANICAL ROOMS, ETC.).
- PROVIDE HORIZONTAL CABLE AS SPECIFIED FOR HVAC CONTROL PANELS, FIRE ALARM CONTROL PANELS, AND ELEVATORS WHERE APPLICABLE. SEE ELECTRICAL AND MECHANICAL DOCUMENTS FOR LOCATIONS.
- PROVIDE WORK SHOWN ON T-SERIES DRAWINGS AS SPECIFIED IN DIVISIONS 27 AND 28.



CSO
 8831 Keystone Crossing Indianapolis, IN 46240
 317.848.7800 | csocnet.net
 © 2011 CSO Architects, Inc. All Rights Reserved.

RE.Dimond and Associates, Inc.
 Consulting Engineers
 1002 North Central Avenue
 Indianapolis, IN 46204
 Phone: (317) 634-4472
 Fax: (317) 638-6725

PROJECT:
HAMILTON SOUTHEASTERN SCHOOLS
RENOVATIONS TO
DURBIN LEARNING CENTER
 18000 DURBIN RD, NOBLESVILLE, IN 46060

SCOPE DRAWINGS:
 These drawings indicate the general scope of the project in terms of mechanical design content. The drawings do not constitute a contract. The drawings are not intended to be used as a basis for any performance and completion of the project. On the basis of the general scope indicated on drawings, the trade contractors shall furnish all items required for the proper execution and completion of the work.

REVISIONS:

1	ADDENDUM #2	01/22/2025
---	-------------	------------

ISSUE DATE	DRAWN BY	CHECKED BY
1/03/2025	VH	JD

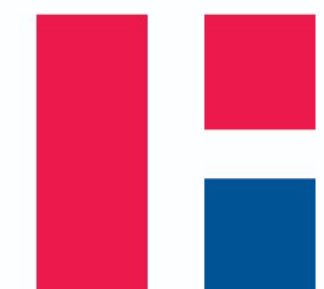
DRAWING TITLE:
SYMBOLS, ABBREVIATIONS, & GENERAL NOTES - TELECOM.

CERTIFIED BY:

 James A. Dornell
 BICSI ID # 101029
 EXPIRES 12-31-27

DRAWING NUMBER
T001

PROJECT NUMBER
2024062



CSO
 8831 Keystone Crossing, Indianapolis, IN 46240
 317.246.7800 | COMMERCIAL
 © 2015 CSO Architects, Inc. All Rights Reserved.

D.S.A. #2083
R.E. Dimond
 and Associates, Inc.
 Consulting Engineers
 702 North Central Avenue
 Indianapolis, IN 46204
 Phone: (317) 634-4472
 Fax: (317) 638-8725

PROJECT:
 HAMILTON SOUTHEASTERN SCHOOLS
 RENOVATIONS TO
 DURBIN LEARNING CENTER
 18000 DURBIN RD, NOBLESVILLE, IN 46060

SCOPE DRAWINGS:
 These drawings indicate the general scope of the project in terms of mechanical design content. The structural, electrical, mechanical and electrical systems. The design is not intended to be used as a basis for construction or for any other purpose without the written consent of the engineer.

REVISIONS:
 1 ADDENDUM #2 01/22/2025

ISSUE DATE	DRAWN BY	CHECKED BY
10/3/2025	VH	JD

DRAWING TITLE:
 DETAILS -
 TELECOM.
 BACKBONE AND
 ROUGH-INS

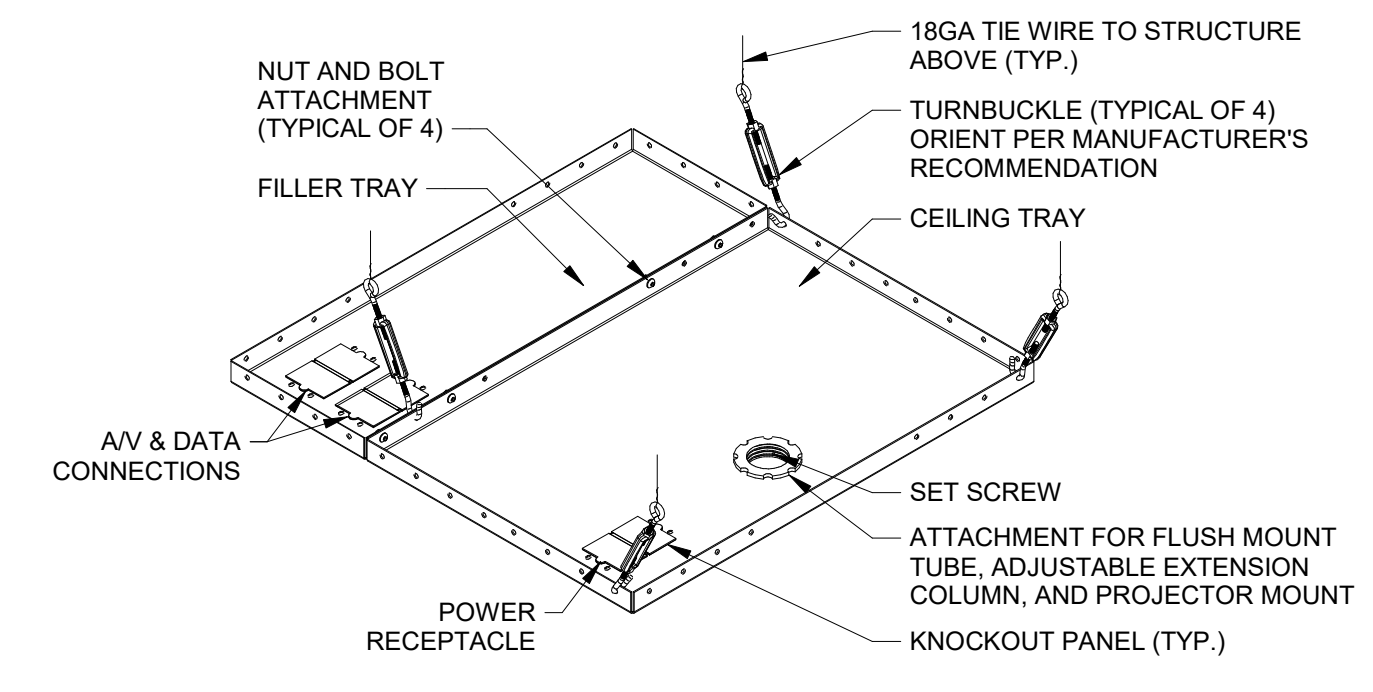
CERTIFIED BY:
Bicsi
 James A. Dornell
 BICSICR # 181093
 EXPIRES 12-31-27
 RCDB

DRAWING NUMBER
T403

PROJECT NUMBER
 2024062

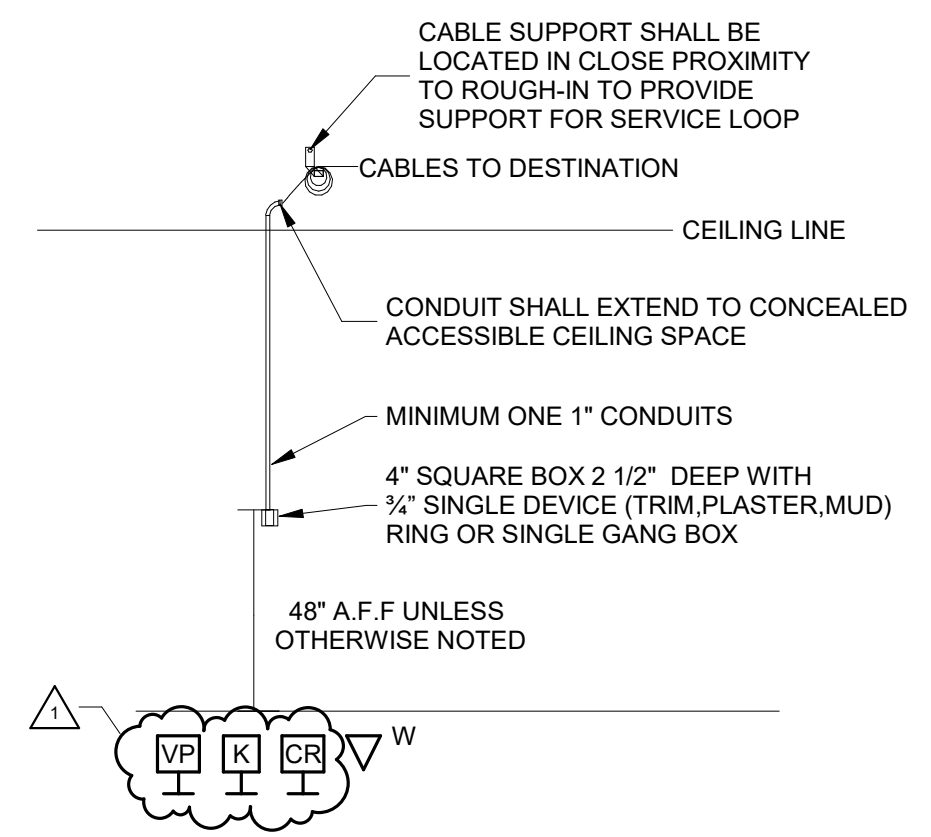
TELECOM DETAIL NOTES:

1. START NOTES HERE:



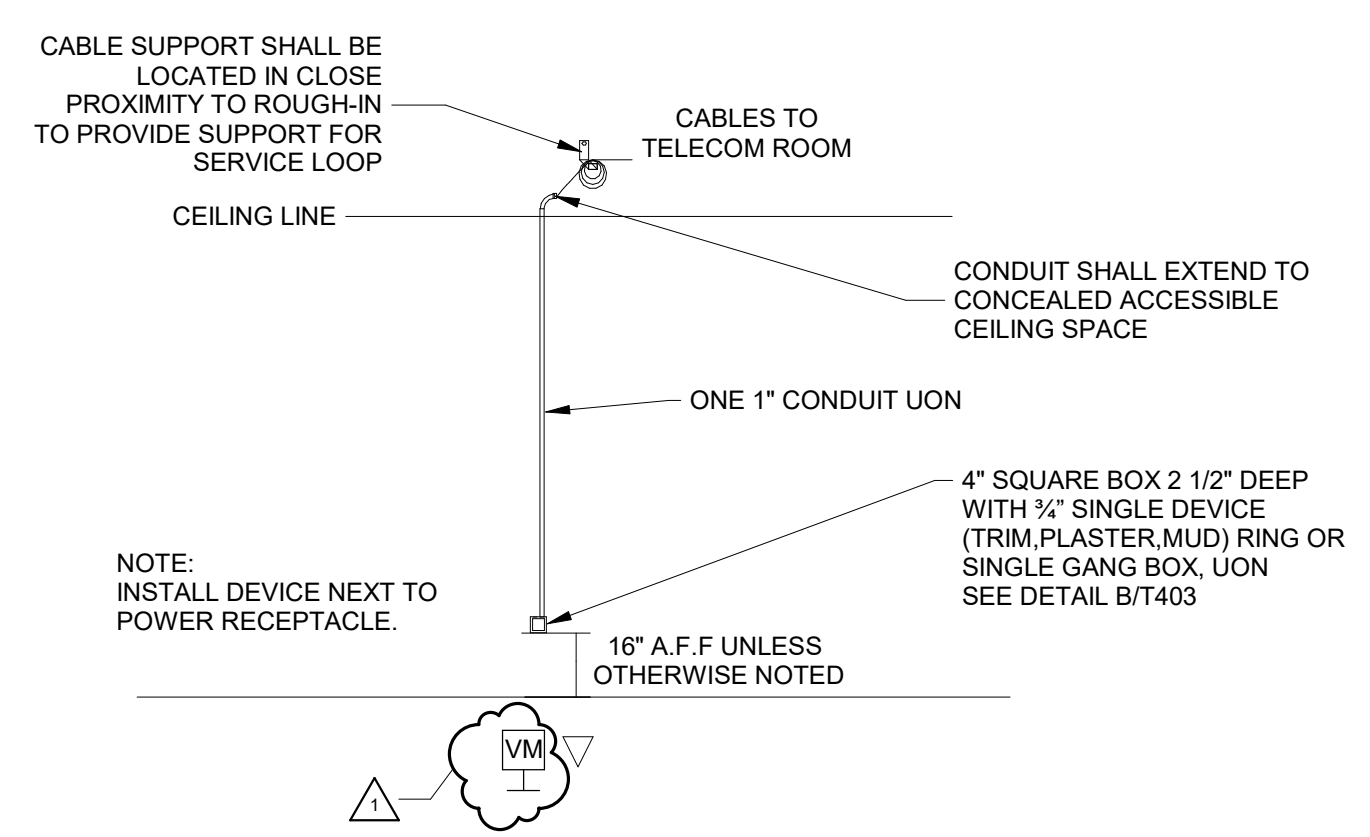
J CEILING-MOUNT PROJECTOR DETAIL (PEERLESS CMJ445)

SCALE: NONE



E TYPICAL WALL OUTLET DEVICE ROUGH-IN

SCALE: NONE

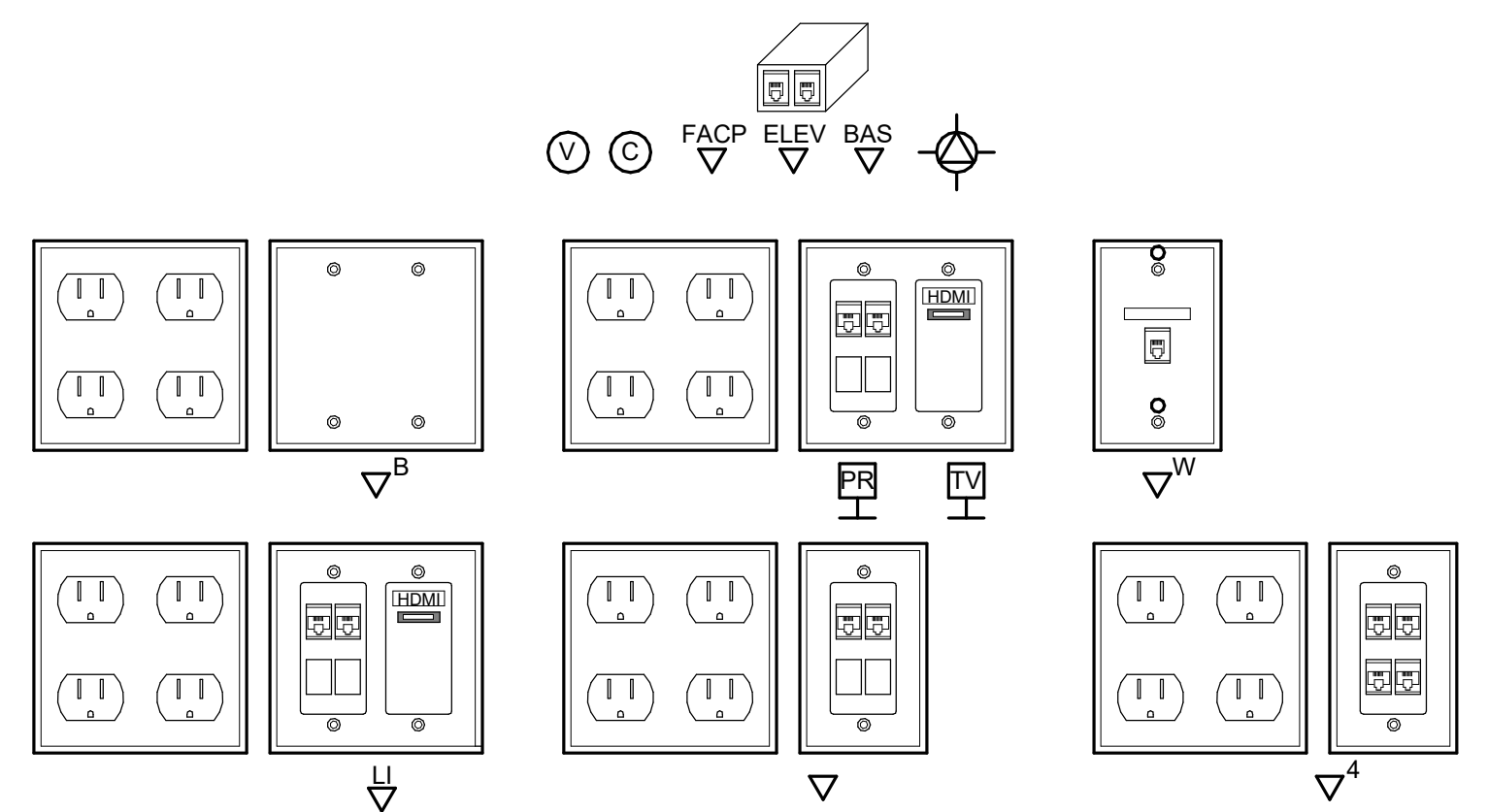


A TYPICAL OUTLET DEVICE ROUGH-IN

SCALE: NONE

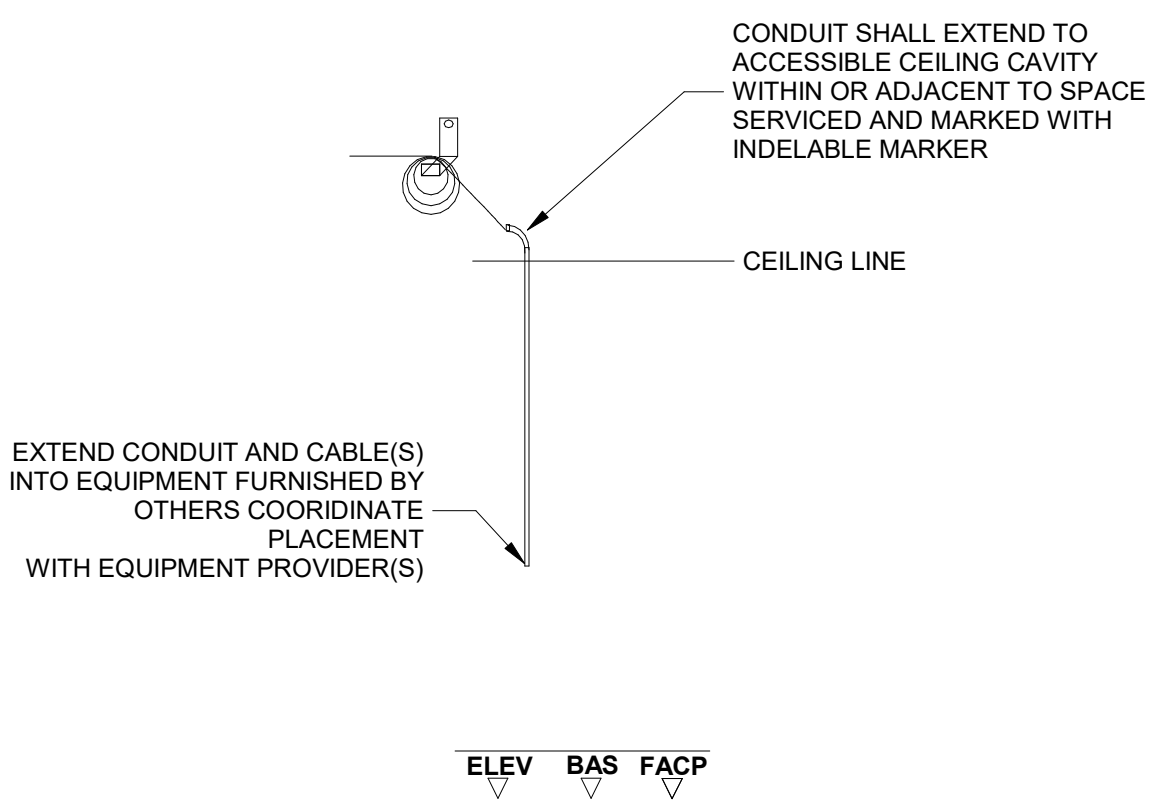
TELECOMMUNICATIONS OUTLET NOTES: (THIS DETAIL)

- WHERE POWER / COMMUNICATIONS MULTI-COMPARTMENT SURFACE RACEWAY IS INSTALLED, SUBSTITUTE (2) 4 PORT JACK FRAMES AND STANDARD "ELECTRICAL OUTLET" FACEPLATE(S) IN PLACE OF THE DOUBLE GANG FACEPLATES SHOWN ON THIS DRAWING. PROVIDE ADDITIONAL FACEPLATES TO FULFILL THE OUTLET PORT REQUIREMENT. OUTLET LOCATIONS REQUIRING 4 OR FEWER PORTS PROVIDE A SINGLE 4 PORT JACK FRAME AND FACEPLATE.
- WHERE CEILING-MOUNTED DEVICE IS LOCATED IN A SPACE WHERE NO ACCESSIBLE CONCEALED CEILING SPACE IS PRESENT, PROVIDE CONDUIT AND OUTLET BOX AS SPECIFIED TO SUPPORT DEVICE.



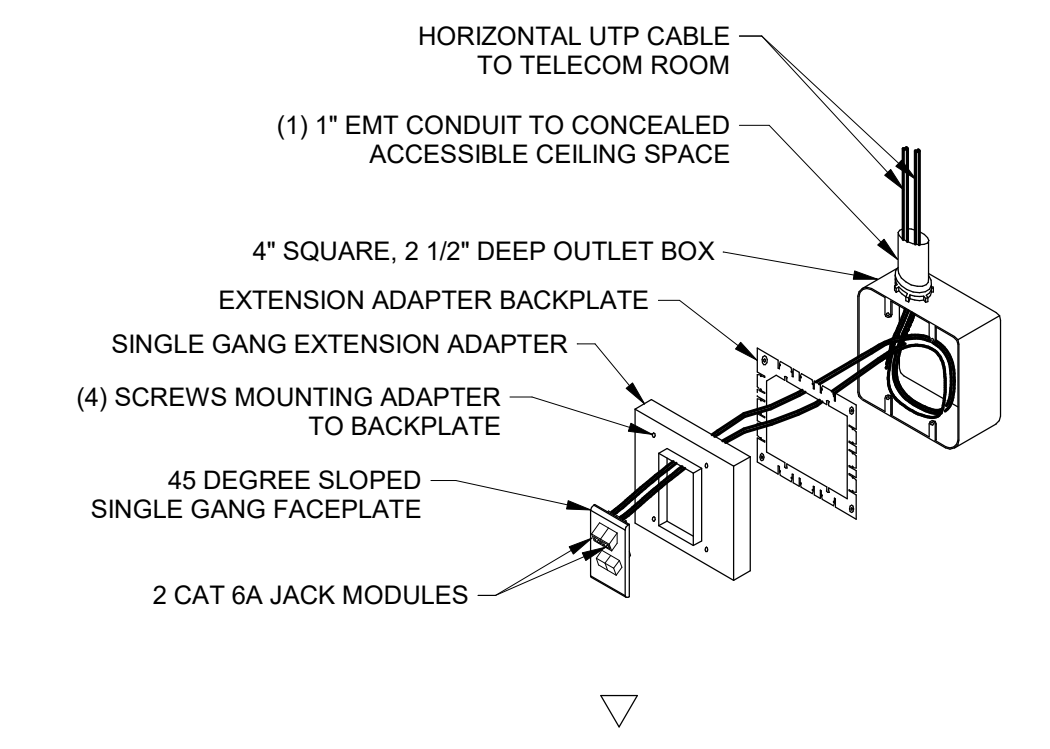
K FACEPLATE DETAILS

SCALE: NONE



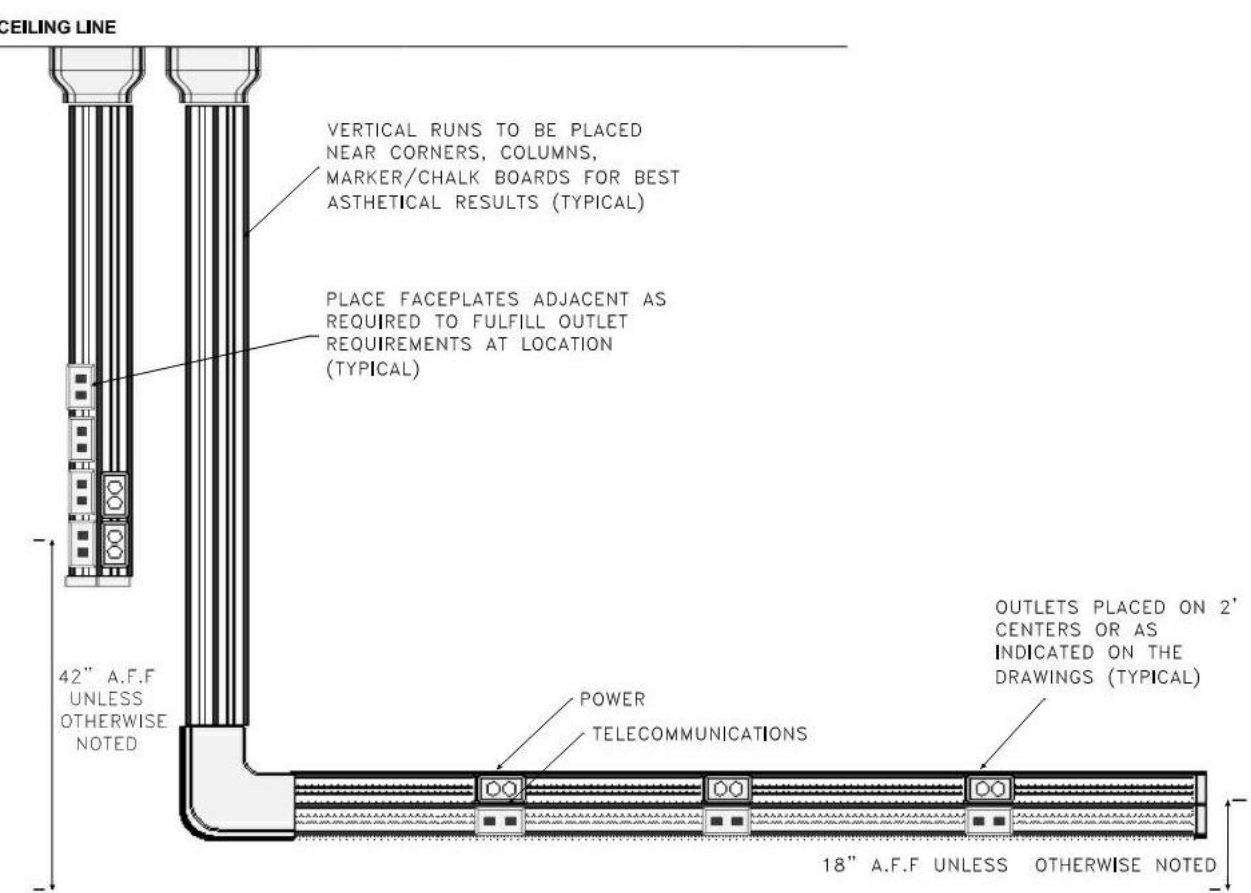
F TYPICAL OUTLET DEVICE ROUGH-IN

SCALE: NONE



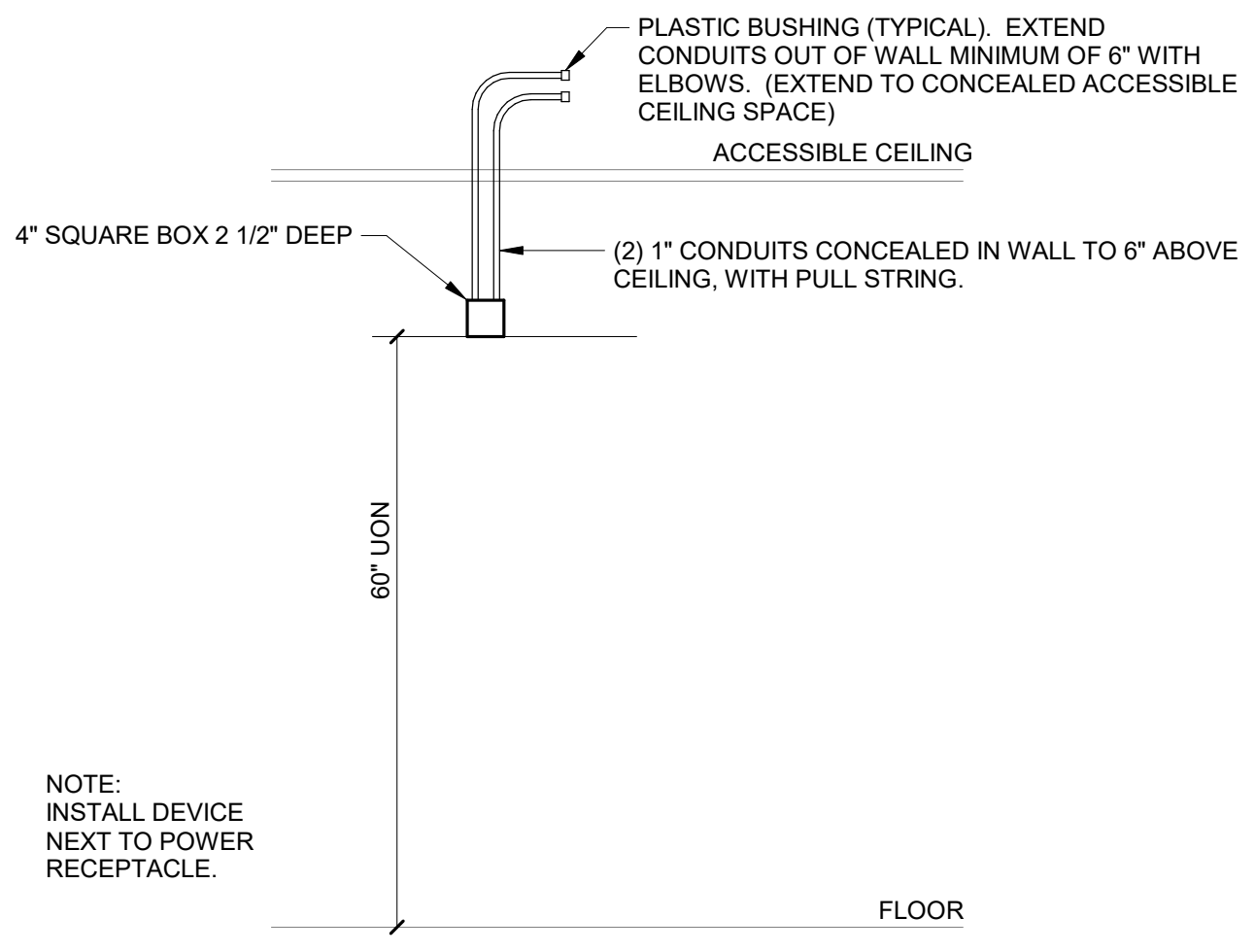
B TYPICAL TELECOM OUTLET BOX

SCALE: NONE



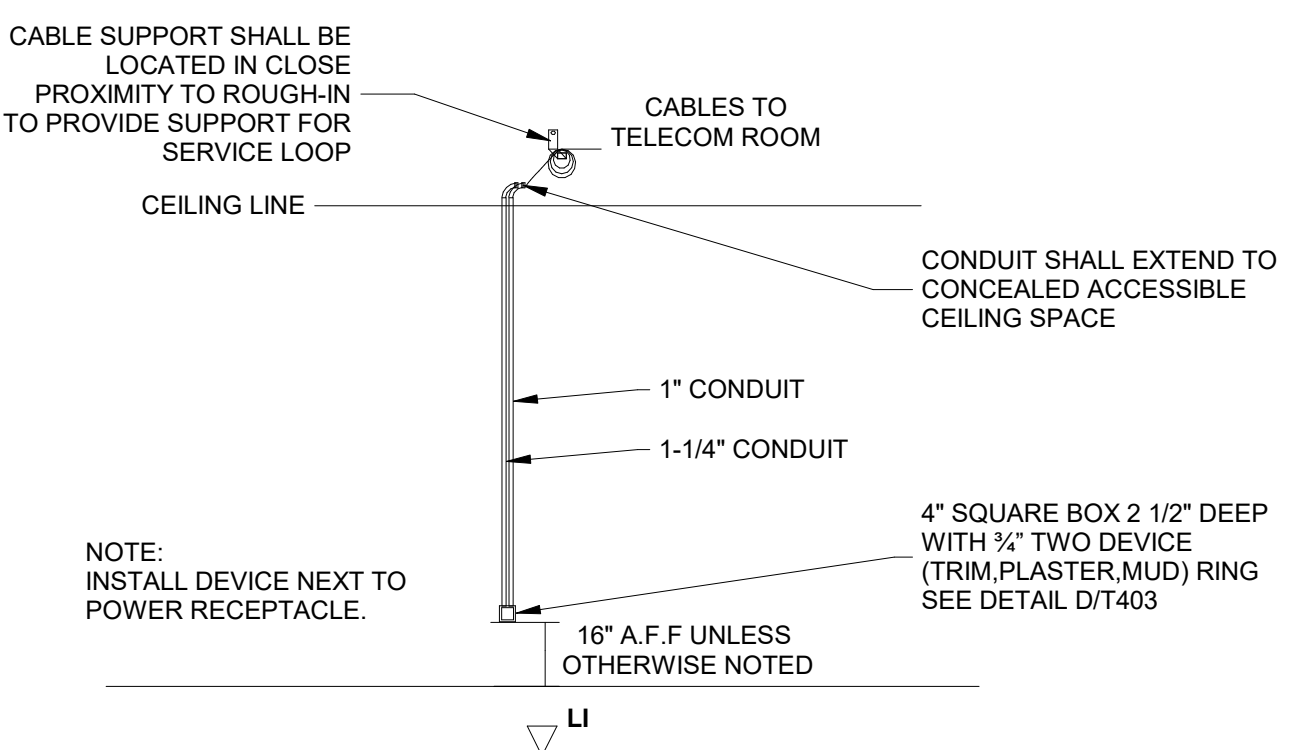
L TYPICAL SURFACE RACEWAY

SCALE: NONE



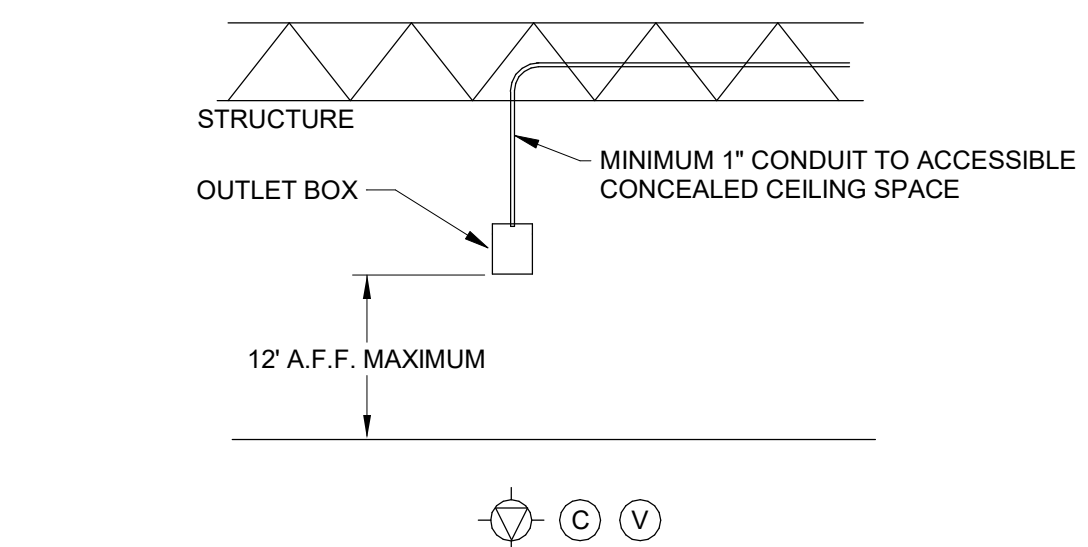
G TV OUTLET ROUGH-IN

SCALE: NONE



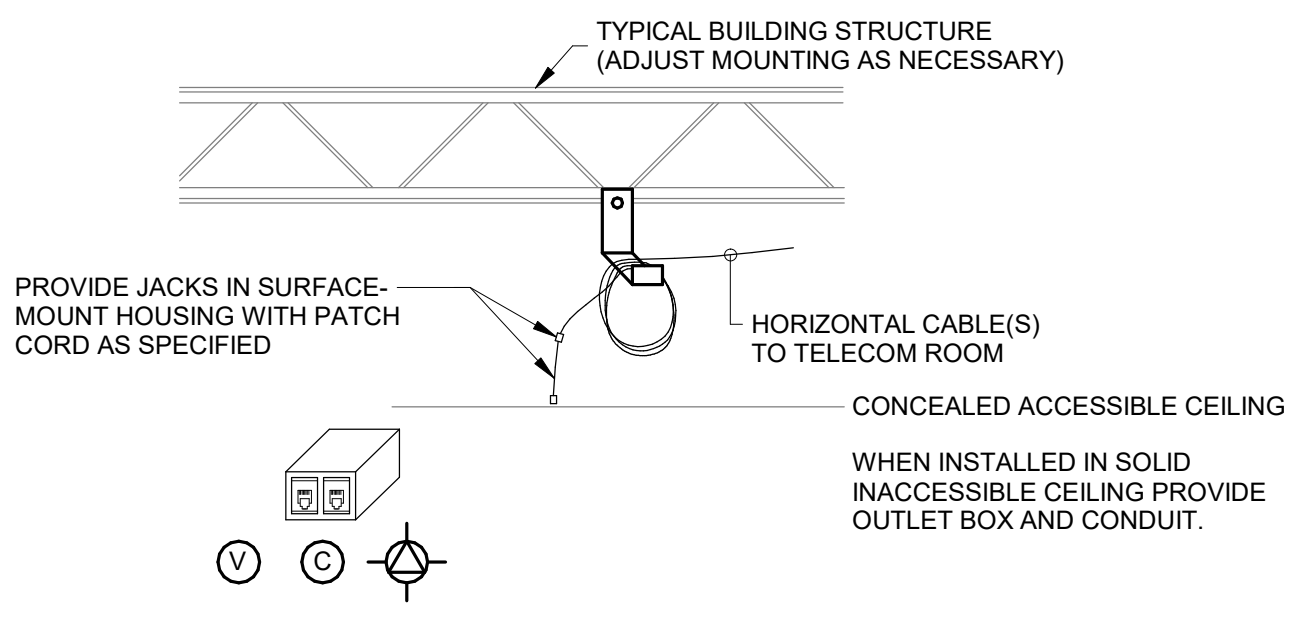
C TYPICAL LI OUTLET DEVICE ROUGH-IN

SCALE: NONE



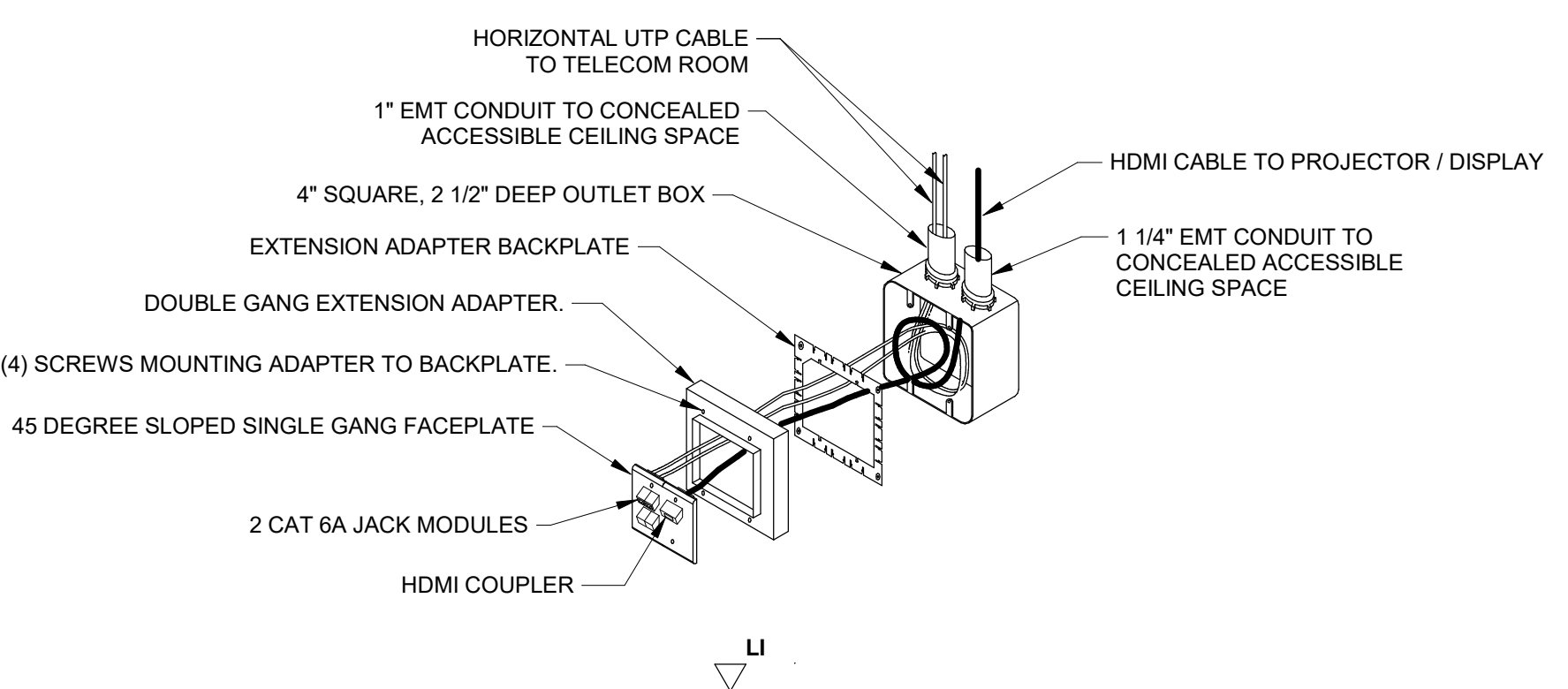
M TYPICAL OPEN CEILING MOUNTING

SCALE: NONE



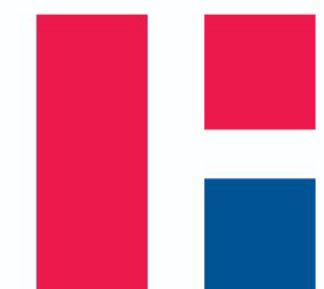
H TYPICAL CEILING MOUNTED ROUGH-IN (ACCESSIBLE CEILING)

SCALE: NONE



D TYPICAL LI TELECOM OUTLET

SCALE: NONE



CSO
 8831 Keystone Crossing, Indianapolis, IN 46240
 317.846.7800 | COMMERCIAL
 © 2011 CSO Architects, Inc. All Rights Reserved.

RE Dimond
 and Associates, Inc.
 Consulting Engineers
 100 North Central Avenue
 Indianapolis, IN 46204
 Phone: (317) 634-4672
 Fax: (317) 638-6725

**HAMILTON SOUTHEASTERN SCHOOLS
 RENOVATIONS TO
 DURBIN LEARNING CENTER**
 18000 DURBIN RD, NOBLESVILLE, IN 46060

SCOPE DRAWINGS:
 These drawings indicate the general scope of the project. The contractor shall verify the location, type, and quantity of all existing conditions. The contractor shall be responsible for all work required for the proper installation and completion of the project. On the basis of the general scope indicated on these drawings, the contractor shall furnish all items required for the proper installation and completion of the work.

REVISIONS:
 1 ADDENDUM #2 01/22/2025

ISSUE DATE 10/3/2025
DRAWN BY VH
CHECKED BY JD

DRAWING TITLE:
**FLOOR PLAN -
 UNIT C -
 TELECOM.
 DEMOLITION**

CERTIFIED BY:
Bicsi
 James A. Dornell
 BICS ID # 101216
 EXPIRES 12-31-27

DRAWING NUMBER
TD201

PROJECT NUMBER
2024062

DEMOLITION LEGEND:

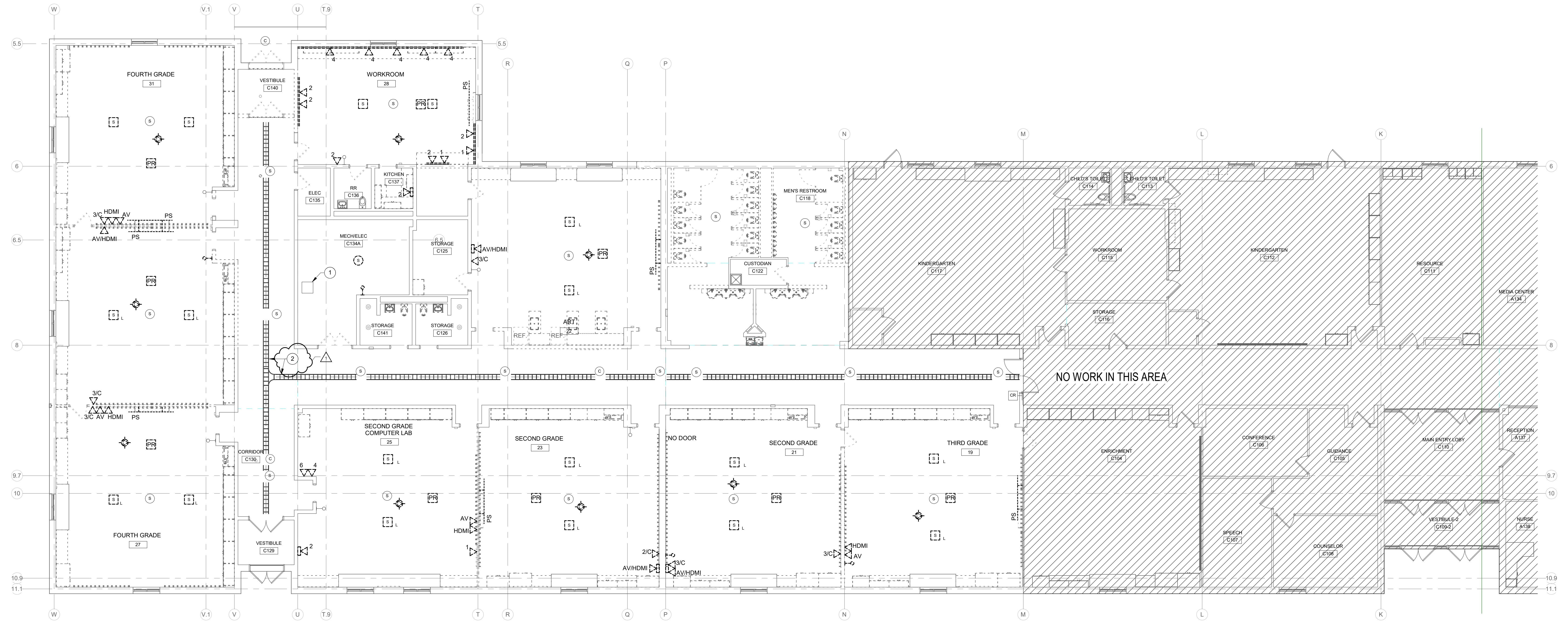
- WORK TO BE REMOVED
- WORK TO REMAIN

GENERAL NOTES:

1. REFER TO DRAWING T001 FOR ADDITIONAL GENERAL NOTES.
2. ALL WORK SHALL REMAIN UNLESS SPECIFICALLY NOTED OTHERWISE.
3. FIELD VERIFY ALL EXISTING CONDITIONS AS TO EXACT SERVICE, LOCATION, TYPE OF MATERIAL, ETC. BEFORE BIDDING AND BEFORE BEGINNING RENOVATION WORK.
4. COORDINATE ALL SHUT-DOWNS, DELIVERY AND STORAGE OF MATERIAL, ETC. WITH OWNER'S REPRESENTATIVE.
5. CONTRACTORS SHALL PROTECT ALL EXISTING OWNER FACILITIES DURING CONSTRUCTION. ANY AND ALL OWNER FACILITIES DAMAGED OR DISCONNECTED BY CONTRACTOR OPERATIONS SHALL BE FULLY RESTORED TO PREVIOUS OPERATING AND APPEARANCE CONDITION BY CONTRACTOR.

PLAN NOTES:

1. EXISTING TELECOM ENCLOSURE (IDF).
2. EXISTING TELECOM CABLE TRAY IN CORRIDOR CEILING TO REMAIN AND BE REUSED TO SUPPORT NEW TELECOM CABLING.



FLOOR PLAN - UNIT C - TELECOMMUNICATIONS DEMOLITION
 SCALE: 1/8" = 1'-0"
 NORTH

