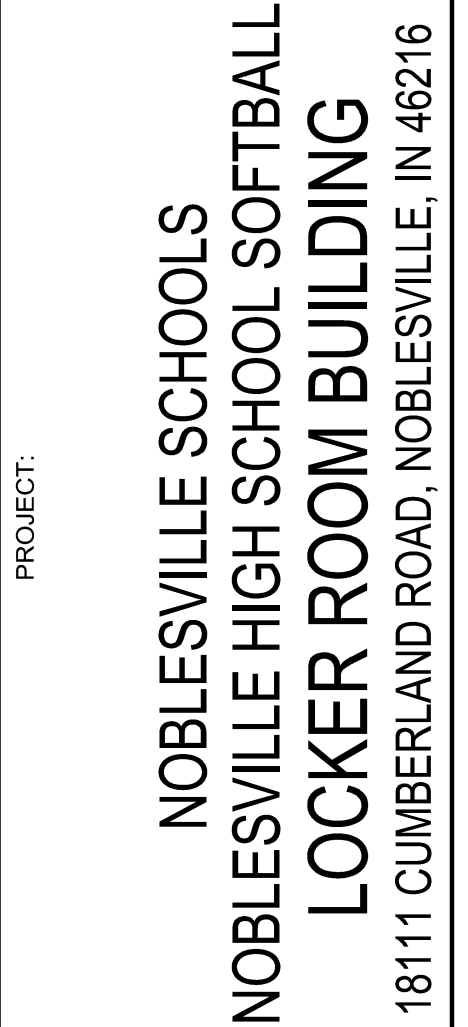
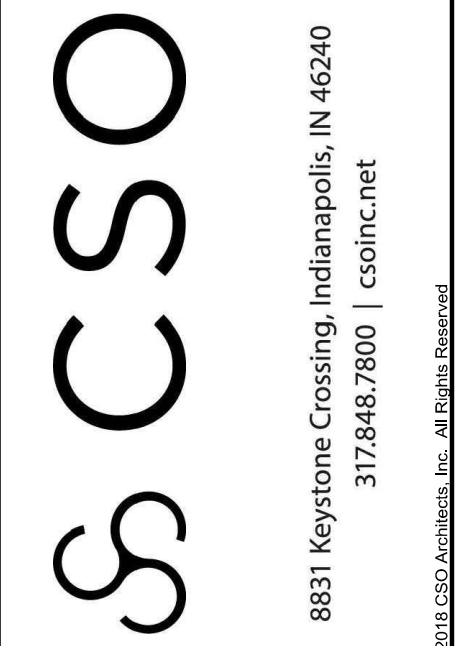


NOBLESVILLE SCHOOLS

NOBLESVILLE HIGH SCHOOL SOFTBALL LOCKER ROOM BUILDING

18111 CUMBERLAND ROAD, NOBLESVILLE, IN 46060
100% CIVIL CONSTRUCTION DOCUMENTS
 JANUARY 09, 2025



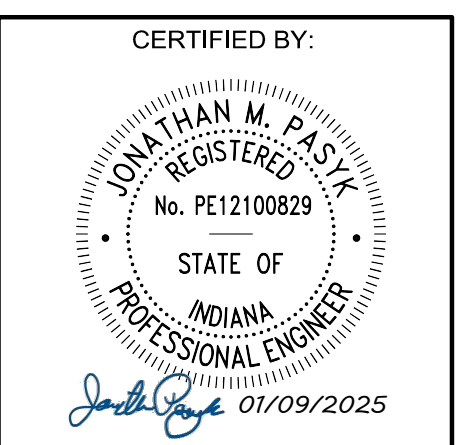
SCOPE DRAWINGS:
 These drawings are prepared for the project in accordance with the contract documents. The drawings are the property of the engineer and shall not be used for any other project without the written consent of the engineer. The drawings do not necessarily indicate or describe all work required for the project and the contractor shall be responsible for obtaining all necessary permits and approvals from the appropriate authorities.

REVISIONS:

01/17/2025	- ADDENDUM #01
01/24/2025	- ADDENDUM #02
01/28/2025	- ADDENDUM #03

ISSUE DATE	DRAWN BY	CHECKED BY
01/09/25	SRD	JMP

DRAWING TITLE:
TITLE SHEET



DRAWING NUMBER
C010

PROJECT NUMBER
2024079



LOCATION MAP
 NOT TO SCALE



VICINITY MAP
 NOT TO SCALE

Sheet Number	Sheet Title
C010	TITLE SHEET
TOPO	TOPOGRAPHIC SURVEY
C110	DEMOLITION PLAN
C111	DEMOLITION PLAN
C112	ALTERNATE 1 DEMOLITION PLAN
C113	ALTERNATE 2 DEMOLITION PLAN
C114	ALTERNATE 3 DEMOLITION PLAN
C210	OVERALL SETBACK PLAN
C310	GRADING PLAN
C311	ALTERNATE 1 GRADING PLAN
C312	ALTERNATE 2 GRADING PLAN
C313	ALTERNATE 3 GRADING PLAN
C410	DRAINAGE PLAN
C510	UTILITY PLAN
C511	OVERALL UTILITY PLAN
C910	STORMWATER POLLUTION PREVENTION PLAN
C911	STORMWATER POLLUTION PREVENTION PLAN
C912	ALTERNATE 1 STORMWATER POLLUTION PREVENTION PLAN
C913	ALTERNATE 2 STORMWATER POLLUTION PREVENTION PLAN
C914	ALTERNATE 3 STORMWATER POLLUTION PREVENTION PLAN
C915	STORMWATER POLLUTION PREVENTION NOTES
C916	STORMWATER POLLUTION PREVENTION DETAILS
	CITY OF NOBLESVILLE STANDARD CONSTRUCTION DETAILS

PROJECT VICINITY

SITE

CONSULTANT TEAM:

DEVELOPER / OWNER

NOBLESVILLE HIGH SCHOOL
 18111 CUMBERLAND RD
 NOBLESVILLE, IN 46060
 PH: (317)773-3171
 CONTACT: DAVID HORTEMILLER
 david_hortemiller@nobl.k12.in.us

CIVIL ENGINEER

CIVIL & ENVIRONMENTAL CONSULTANTS, INC.
 530 E. OHIO STREET, SUITE G
 INDIANAPOLIS, IN 46204
 PH: (317) 655-7777
 CONTACT: AARON HURT
 ahurt@cecinc.com

CITY AND UTILITY CONTACTS:

GAS
 CENTERPOINT ENERGY
 16000 ALLISONVILLE ROAD
 NOBLESVILLE, IN 46060
 ATTN: CHAD MILLER
 (317) 776-6590
 Chad.Miller@centerpointenergy.com

STORM SEWER
 CITY OF NOBLESVILLE
 18 S. 10TH STREET
 NOBLESVILLE, IN 46060
 ATTN: JOY BOSSE
 (317) 776-6330
 jbosse@noblesville.in.us

WATER
 INDIANA AMERICAN WATER
 15227 HERMAN BLVD
 NOBLESVILLE, IN 46060
 ATTN: JOSH COX
 (317) 776-2497
 joshua.cox@iamwater.com

ARCHITECT

CSO ARCHITECTS
 8831 KEYSTONE CROSSING
 INDIANAPOLIS, IN 46240
 PH: (317) 848-7800
 CONTACT: BRAD KROHN
 BKrohn@CSOinc.net

SURVEYOR

CIVIL & ENVIRONMENTAL CONSULTANTS, INC.
 530 E. OHIO STREET, SUITE G
 INDIANAPOLIS, IN 46204
 PH: (317) 655-7777
 CONTACT: ANTHONY SYERS
 asyer@cecinc.com

SANITARY SEWER
 CITY OF NOBLESVILLE
 135 S. 9TH STREET
 NOBLESVILLE, IN 46060
 ATTN: JONATHAN MIRGALX
 (317) 776-6353
 jmirgalex@noblesville.in.us

FIRE DEPARTMENT
 NOBLESVILLE FIRE DEPARTMENT
 1576 PLEASANT STREET
 NOBLESVILLE, IN 46060
 ATTN: BARREL CROSS
 (317) 776-6336
 dcross@noblesville.in.us

LANDSCAPE ARCHITECT

CONTEXT DESIGN
 12 S. MAIN STREET, STE. 200
 FORTVILLE, IN 46060
 PH: (317) 485-6900
 CONTACT: FRED PRAZEAU
 fprazeau@context-design.com

ELECTRIC
 DUKE ENERGY
 100 SOUTH MILLCREEK ROAD
 NOBLESVILLE, INDIANA 46061
 ATTN: ERIC LONG
 (317) 776-6336
 Eric.Long@duke-energy.com

STREET DEPARTMENT
 CITY OF NOBLESVILLE
 1576 PLEASANT STREET
 NOBLESVILLE, INDIANA 46060
 ATTN: JOHN CASLEY
 (317) 776-6348
 jcasley@noblesville.in.us

TELECOMMUNICATIONS
 AT&T
 171519 MERCANTILE BLVD
 NOBLESVILLE, IN 46060
 ATTN: WENDY NOBLE
 (317) 403-6673
 WLNoble@att.com

METRONET
 12415 OLD MERIDIAN STREET
 CARMEL, IN 46032
 ATTN: TOM DECKER
 tom.decker@metronet.com

COMCAST
 5330 EAST 65TH STREET
 INDIANAPOLIS, IN 46220
 ATTN: EARL SMALL JR.
 (317) 982-1161
 Earl.Small@comcast.com

DATACOM CONNECT
 2250 N. ARLINGTON AVE
 INDIANAPOLIS, IN 46218
 ATTN: TIM BURR
 (317) 543-7841
 tim.burr@datacomconnect.com

NOBLESVILLE CONSTRUCTION STANDARD NOTE 5

DESIGN PROFESSIONAL CERTIFYING THE PLANS FOR THE PROJECT ACKNOWLEDGES THEIR PROFESSIONAL RESPONSIBILITY FOR ENSURING THAT ALL WORK IS CORRECT, ACCURATE, AND COMPLIES WITH ALL APPROPRIATE LAWS, STANDARDS, REGULATIONS, AND ORDINANCES. IF SUCH AN ERROR AND/OR OMISSION IS FOUND, THE DESIGN PROFESSIONAL ACCEPTS FULL RESPONSIBILITY AND SHALL DETERMINE A SOLUTION THAT COMPLIES WITH ALL APPROPRIATE LAWS, STANDARDS, REGULATIONS, AND ORDINANCES. IF SUCH AN ERROR OR OMISSION IS FOUND, THE DEVELOPER IS NOT RELIEVED TO COMPLY WITH ALL APPROPRIATE LAWS, STANDARDS, REGULATIONS, AND ORDINANCES.

BENCHMARKS:

UNLESS OTHERWISE NOTED, ELEVATIONS SHOWN HEREON ARE BASED UPON AN OPUS SOLUTION AND ARE ON THE 1988 NORTH AMERICAN VERTICAL DATUM (NAD83 (GEOID 1985)). IT IS MY OPINION THAT THE UNCERTAINTY IN THE ELEVATION OF THE PROJECT BENCHMARK DOES NOT EXCEED 0.10 FOOT.

TBM#1: MAG NAIL IN A CONCRETE WALK LOCATED APPROXIMATELY 20' EAST OF THE BATTING CAGE AND 170' NORTH OF THE PRESS BOX AT THE HIGH SCHOOL SOFTBALL FIELDS. ELEV. = 783.84

TBM#2: MAG NAIL IN THE NORTHEAST CORNER OF THE NORTH END OF AN ASPHALT PATH LOCATED EAST OF THE CELL TOWER. ELEV. = 774.92

TBM#3: MAG NAIL ON THE SOUTH EDGE OF A CONCRETE WALK LOCATED NORTH OF THE MIDDLE SCHOOL TRACK AND APPROXIMATELY 60' WEST OF THE ASPHALT PATH TO THE NORTHEAST CORNER OF S&D TRACK. ELEV. = 775.11

UTILITY NOTE:

THE UNDERGROUND UTILITIES SHOWN HAVE BEEN LOCATED FROM FIELD SURVEY INFORMATION AND EXISTING DRAWINGS. THE SURVEYOR MAKES NO GUARANTEE THAT THE UNDERGROUND UTILITIES COMPRISE ALL SUCH UTILITIES IN THE AREA, EITHER IN-SERVICE OR ABANDONED. THE SURVEYOR FURTHER DOES NOT WARRANT THAT THE UNDERGROUND UTILITIES SHOWN ARE IN THE EXACT LOCATION INDICATED ALTHOUGH THE SURVEYOR DOES CERTIFY THAT THEY ARE LOCATED AS ACCURATELY AS POSSIBLE FROM INFORMATION AVAILABLE. THE SURVEYOR HAS NOT PHYSICALLY LOCATED THE UNDERGROUND UTILITIES. INDIANA 811 ONE-CALL PUBLIC UTILITY LOCATE SERVICE TICKET NUMBERS 2408290462, 2408286563 AND 2408290347 WERE ISSUED FOR THIS SITE. AMERICAN LOCATING SERVICES, A PRIVATE SUBSURFACE UTILITY LOCATING SERVICE, WAS CONTRACTED TO PERFORM THE PRIVATE UTILITY LOCATIONS FOR THE SUBJECT SITE. THE PRIVATE UTILITIES LOCATED AND DEPICTED HEREIN WERE EITHER OBSERVED FROM MARKINGS ON THE GROUND OR USING EXISTING PLANS.

PRIOR TO ANY EXCAVATION FOR UNDERGROUND UTILITIES, THE CONTRACTOR SHALL EXPOSE AND VERIFY LOCATIONS (HORIZONTAL AND VERTICAL) OF ALL EXISTING UTILITIES INCLUDING BUT NOT LIMITED TO GAS, WATER, AND SANITARY SEWER. ANY CONFLICTS SHALL BE REPORTED IMMEDIATELY TO THE ENGINEER AND THE APPROPRIATE AUTHORITIES.





DRAINAGE SUMMARY

THE PROPOSED PROJECT WILL DISTURB APPROXIMATELY 0.30ACRES TO CONSTRUCT A NEW CONCESSION BUILDING AND ASSOCIATED SITE IMPROVEMENTS. THE PROPOSED BUILDING WILL REPLACE THE EXISTING CONCESSION STAND AND THE PROJECT WILL INCREASE THE AMOUNT OF IMPERVIOUS AREA. TO MITIGATE THE INCREASE IN IMPERVIOUS AREA, STORMWATER WILL CONTINUE TO FOLLOW ITS EXISTING DRAINAGE PATTERN AND ROUTE. THE EXISTING STORMWATER NETWORK LOCATED NORTH OF THE SITE, THE EXISTING STORMWATER NETWORK ROUTES TO AN EXISTING DETENTION POND LOCATED EAST OF THE PROJECT SITE THAT DRAINS THE HIGH SCHOOL PROPERTY. DUE TO THE NEGLIGIBLE INCREASE IN IMPERVIOUS AREA NO MODIFICATIONS TO THE EXISTING DETENTION POND WILL BE REQUIRED.

GENERAL DRAINAGE NOTES:

- CONTRACTOR SHALL STRICTLY ADHERE TO THE EROSION CONTROL MEASURES PREPARED FOR THIS PROJECT.
- DRAINAGE SYSTEMS SHALL BE INSPECTED DURING CONSTRUCTION BY A REGISTERED PROFESSIONAL ENGINEER OR LAND SURVEYOR. WITHIN 30 DAYS AFTER COMPLETION OF ON AND OFF-SITE DRAINAGE FACILITIES, THE REGISTERED PROFESSIONAL SHALL CERTIFY IN WRITING THE COMPLIANCE OF THE DRAINAGE FACILITIES PER LOCAL REQUIREMENTS.
- CONTRACTOR SHALL PERPETUATE ALL DRAINS AND TILES ENCOUNTERED DURING CONSTRUCTION. COORDINATE WITH ENGINEER OF RECORD REGARDING THE CONNECTION TO THE PROPOSED STORM SEWER SYSTEM.
- STORM STRUCTURES RECEIVING SUB-SURFACE DRAINS (SSD) SHALL HAVE BOTH CONNECTIONS CORE DRILLED. T OR Y BLIND CONNECTIONS ARE NOT ALLOWED.
- THE CONTRACTOR SHALL BE RESPONSIBLE FOR ALL COSTS ASSOCIATED WITH THE INSTALLATION, INSPECTION, TESTING AND FINAL ACCEPTANCE OF ALL NEW STORMWATER MANAGEMENT FACILITIES CONSTRUCTION. CONTRACTOR SHALL COORDINATE WITH ALL APPLICABLE REGULATING AGENCIES CONCERNING INSTALLATION, INSPECTION AND APPROVAL OF THE STORM DRAINAGE SYSTEM CONSTRUCTION.
- ALL STORMWATER MANAGEMENT FACILITIES, INCLUDING COLLECTION AND CONVEYANCE STRUCTURES SHALL BE INSTALLED IN ACCORDANCE WITH ALL APPLICABLE LOCAL AND STATE CODES AND REGULATIONS.
- ANY WORK PERFORMED IN THE LOCAL OR STATE RIGHT OF WAYS SHALL BE IN ACCORDANCE WITH THE APPLICABLE LOCAL OR STATE REQUIREMENTS. IT SHALL BE THE CONTRACTOR'S RESPONSIBILITY TO OBTAIN THE NECESSARY PERMITS FOR THE WORK, SCHEDULE NECESSARY INSPECTIONS, AND PROVIDE THE NECESSARY TRAFFIC CONTROL MEASURES AND DEVICES, ETC., FOR WORK PERFORMED IN THE RIGHT OF WAYS.
- DISTANCES SHOWN ON PIPING ARE HORIZONTAL DISTANCES FROM CENTER OF STRUCTURE TO CENTER OF STRUCTURE, UNLESS OTHERWISE NOTED.
- STORM PIPE MATERIAL OPTIONS ARE AS FOLLOWS: HDPE (N-12 DUAL WALL POLYETHYLENE PIPE), PVC SDR35, OR RCP (CLASS III) OR APPROVED EQUAL.
- PRIOR TO CONSTRUCTION, CONTRACTOR TO VERIFY FEASIBILITY OF CONNECTING ADDITIONAL STORM PIPES TO EXISTING STRUCTURES. CONTRACTOR TO REHABILITATE STORM STRUCTURES FROM CORE-DRILLING NEW HOLES. REHABILITATION MAY INCLUDE BUT IS NOT LIMITED TO FLOW LINE FORMATION, SEALING CRACKS, STRUCTURAL LINING OR OTHER PROCEDURES AS REQUIRED BY THE CITY OF GREENFIELD. REFUGES STRUCTURE IF REHABILITATION IS NOT POSSIBLE.

DRAINAGE LEGEND:

- 780 PROPOSED INDEX CONTOUR
- 782 PROPOSED INTERMEDIATE CONTOUR
- PROPOSED DRAINAGE SWALE
- PROPOSED STORM SEWER LINE
- PROPOSED UNDERDRAIN

DRAINAGE KEY NOTES

- (A) CONNECT DOWNSPOUT TO ROOF DRAIN PIPE. COORDINATE LOCATION WITH "A" SERIES OF PLANS. SEE DETAIL.
- (B) 4" PVC STORM PIPE AT 1.0% MIN.
- (C) STORM PIPE DAYLIGHT TO GRADE.
- (D) STORM DOWNSPOUT. SPLASH ON GRADE.

UTILITY NOTE:

THE UNDERGROUND UTILITIES SHOWN HAVE BEEN LOCATED FROM FIELD SURVEY INFORMATION AND EXISTING DRAWINGS. THE SURVEYOR MAKES NO GUARANTEES THAT THE UNDERGROUND UTILITIES COMPRISE ALL SUCH UTILITIES IN THE AREA, EITHER IN-SERVICE OR ABANDONED. THE SURVEYOR FURTHER DOES NOT WARRANT THAT THE UNDERGROUND UTILITIES SHOWN ARE IN THE EXACT LOCATION INDICATED ALTHOUGH THE SURVEYOR DOES CERTIFY THAT THEY ARE LOCATED AS ACCURATELY AS POSSIBLE FROM INFORMATION AVAILABLE. THE SURVEYOR HAS NOT PHYSICALLY LOCATED THE UNDERGROUND UTILITIES. INDIANA 811 ONE-CALL PUBLIC UTILITY LOCATE SERVICE TICKET NUMBERS 2408290462, 2408285653 AND 2408290347 WERE ISSUED FOR THIS SITE. AMERICAN LOCATING SERVICES, A PRIVATE SUBSURFACE UTILITY LOCATING SERVICE, WAS CONTRACTED TO PERFORM THE PRIVATE UTILITY LOCATIONS FOR THE SUBJECT SITE. THE PRIVATE UTILITIES LOCATED AND DEPICTED HEREIN WERE EITHER OBSERVED FROM MARKINGS ON THE GROUND OR USING EXISTING PLANS.

PRIOR TO ANY EXCAVATION FOR UNDERGROUND UTILITIES, THE CONTRACTOR SHALL EXPOSE AND VERIFY LOCATIONS (HORIZONTAL AND VERTICAL) OF ALL EXISTING UTILITIES INCLUDING BUT NOT LIMITED TO GAS, WATER, AND SANITARY SEWER. ANY CONFLICTS SHALL BE REPORTED IMMEDIATELY TO THE ENGINEER AND THE APPROPRIATE AUTHORITIES.

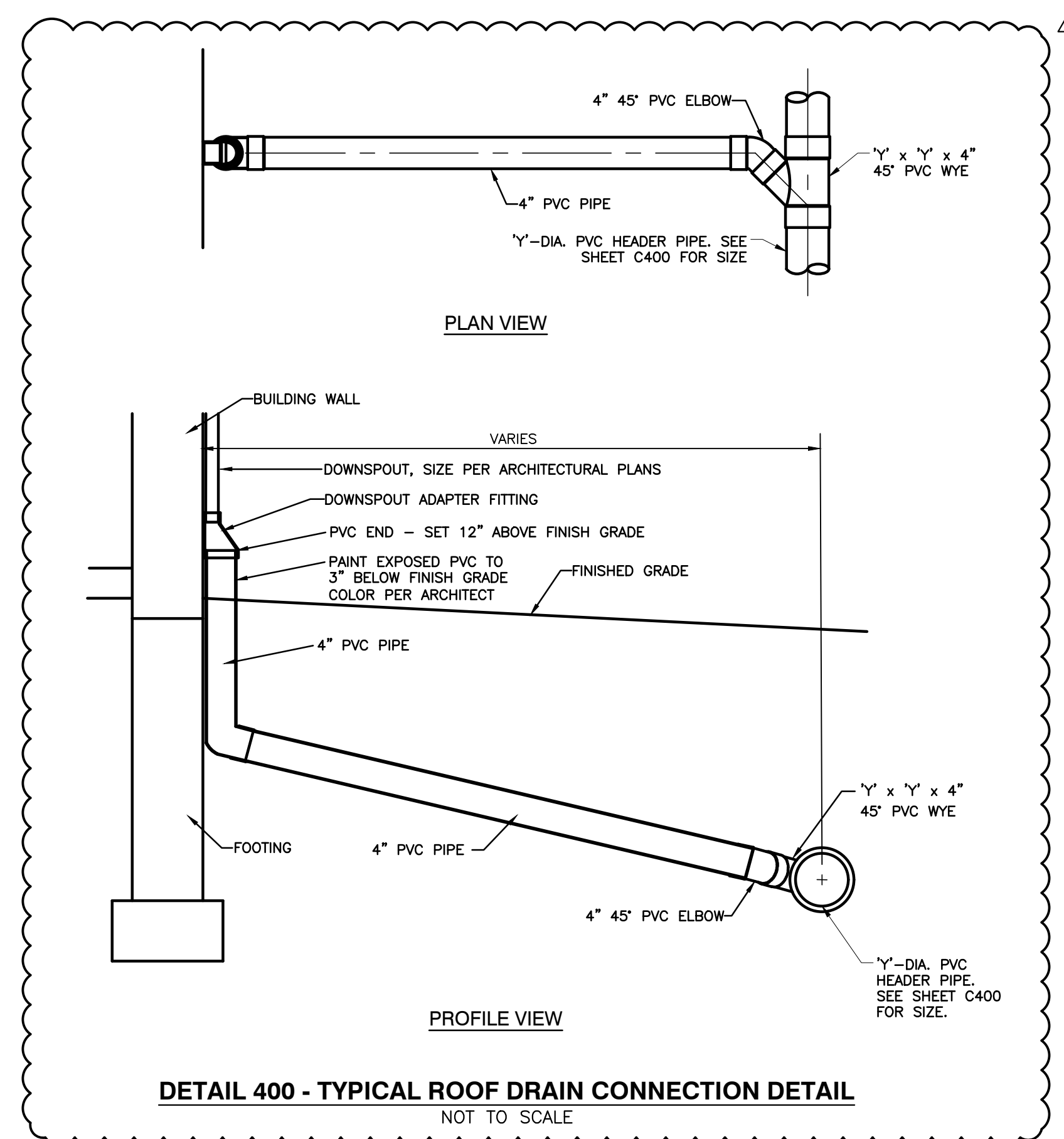
BENCHMARKS:

UNLESS OTHERWISE NOTED, ELEVATIONS SHOWN HEREON ARE BASED UPON AN OPUS SOLUTION AND ARE ON THE 1988 NORTH AMERICAN VERTICAL DATUM (NAV88 (GEOID 18)). IT IS MY OPINION THAT THE UNCERTAINTY IN THE ELEVATION OF THE PROJECT BENCHMARK DOES NOT EXCEED 0.10 FOOT.

BM#1: MAG NAIL IN A CONCRETE WALK LOCATED APPROXIMATELY 20' EAST OF THE BATTING CAGE AND 170' NORTH OF THE PRESS BOX AT THE HIGH SCHOOL SOFTBALL FIELDS. ELEV. = 783.84

BM#2: MAG NAIL IN THE NORTHEAST CORNER OF THE NORTH END OF AN ASPHALT PATH LOCATED EAST OF THE CELL TOWER. ELEV. = 774.92

BM#3: MAG NAIL ON THE SOUTH EDGE OF A CONCRETE WALK LOCATED NORTH OF THE MIDDLE SCHOOL TRACK AND APPROXIMATELY 60' WEST OF THE ASPHALT PATH TO THE NORTHEAST CORNER OF SAID TRACK. ELEV. = 775.11



DETAIL 400 - TYPICAL ROOF DRAIN CONNECTION DETAIL
NOT TO SCALE

SCALE IN FEET
0 10' 20'



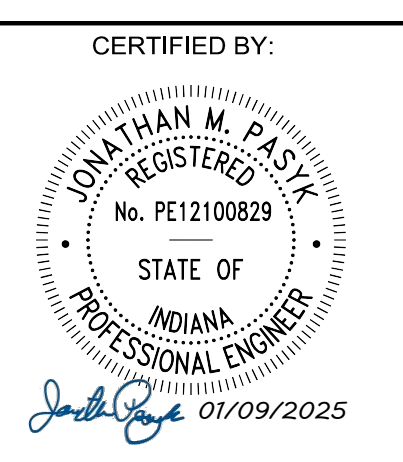
PROJECT:
NOBLESVILLE SCHOOLS
NOBLESVILLE HIGH SCHOOL
CONCESSION BUILDINGS
FIELD DR., NOBLESVILLE, IN 46060

SCOPE DRAWINGS:
These drawings include the general scope of the project in terms of architectural design, layout, the dimensions of the building, the major structural elements and the type of structural, mechanical and electrical systems. The drawings do not necessarily indicate or describe all work required for full performance and completion of the requirements of the Contract. No other construction shall be required for the proper installation and completion of the work.

REVISIONS:
01/28/2025 - ADDENDUM #03

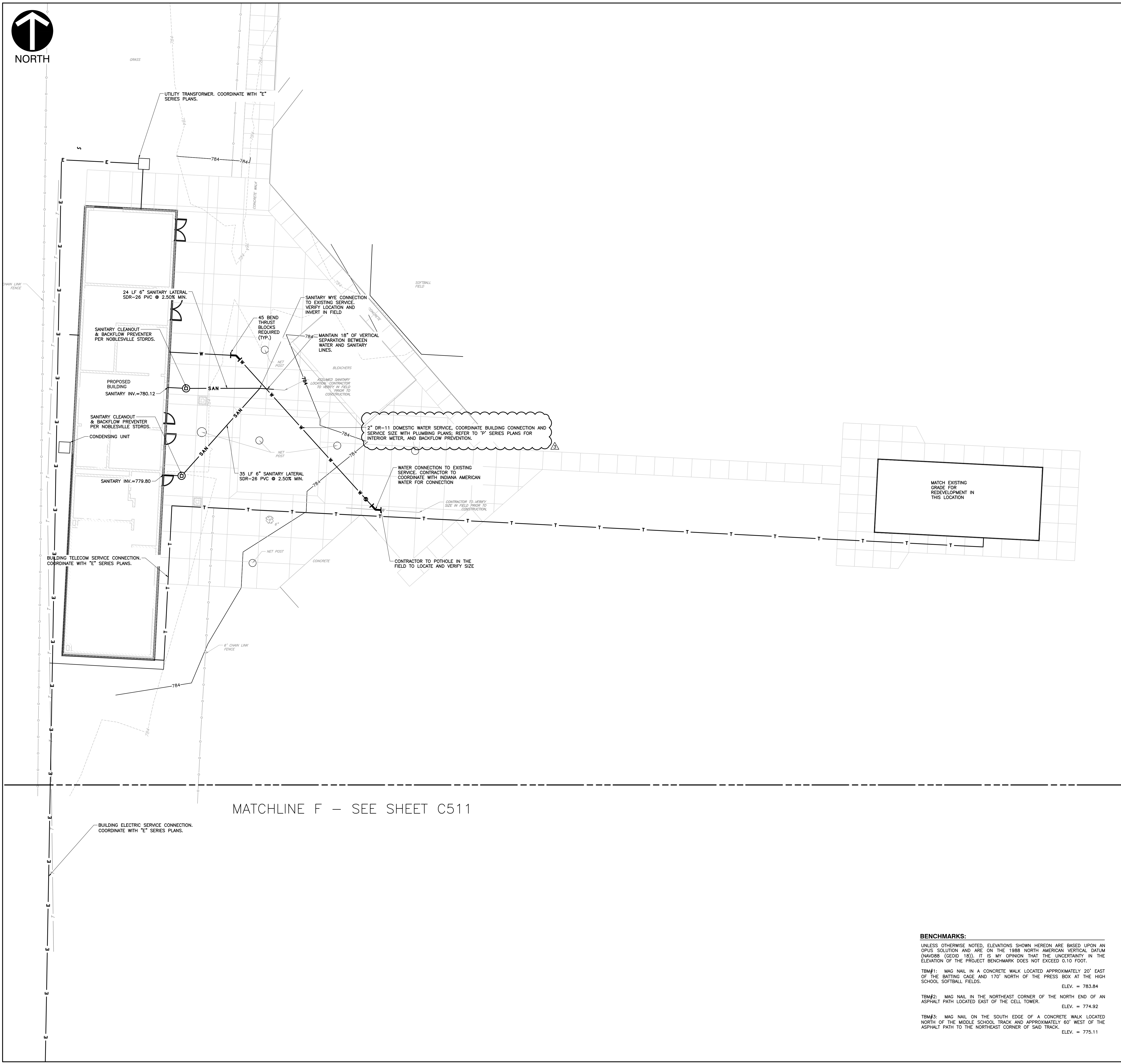
ISSUE DATE	DRAWN BY	CHECKED BY
01/09/25	SRD	JMP

DRAWING TITLE:
DRAINAGE PLAN



DRAWING NUMBER
C410

PROJECT NUMBER
DRAFT



- GENERAL UTILITY NOTES:**
1. THE UTILITIES INDICATED ON THESE PLANS AND ON THE SURVEY MAY NOT BE A COMPLETE INVENTORY OF ALL THE EXISTING UTILITIES PRESENT ON AND AROUND THE SITE. THE LOCATION AND SIZE OF THESE UTILITIES MAY BE APPROXIMATE. THE ENGINEER SHALL NOT BE HELD LIABLE FOR ANY INACCURATE UTILITY INFORMATION INDICATED, IMPLIED, OR NOT INDICATED ON THESE PLANS.
 2. IT SHALL BE THE CONTRACTOR'S RESPONSIBILITY TO LOCATE AND MAINTAIN IN SERVICE ALL EXISTING UTILITIES ENCOUNTERED DURING CONSTRUCTION UNLESS OTHERWISE INDICATED IN THE DRAWINGS. ANY PIPING WHICH CAN BE REMOVED DURING CONSTRUCTION WITHOUT UNDUE INTERRUPTION OF SERVICE MAY BE REMOVED AND REPLACED BY THE CONTRACTOR, AT HIS EXPENSE WITH THE PERMISSION OF THE OWNER.
 3. BEFORE WORKING WITH OR AROUND EXISTING UTILITIES, THE APPLICABLE UTILITY COMPANY SHALL BE CONTACTED BY THE CONTRACTOR.
 4. WHEN CONNECTIONS ARE TO BE MADE TO EXISTING PIPING AND STRUCTURES OR WHERE CONSTRUCTION IS IN THE VICINITY OF EXISTING PIPING THE LOCATION AND ELEVATION OF THE EXISTING PIPING SHALL BE FIELD VERIFIED AND NOTIFICATION GIVEN TO THE OWNER IF THE EXISTING PIPING IS FOUND TO BE DIFFERENT THAN THAT SHOWN ON THE DRAWINGS.
 5. FOR CLARITY OF THESE DRAWINGS, PIPES MAY NOT BE DRAWN TO SCALE OR EXACTLY LOCATED.
 6. ALL NEW WATER LINES SHALL HAVE A MINIMUM OF 54 INCHES OF COVER.
 7. MINIMUM OF 18 INCHES OF VERTICAL CLEARANCE SHALL BE PROVIDED BETWEEN NEW WATER AND SANITARY SEWER LINES. IF 18 INCHES OF CLEARANCE IS NOT PROVIDED THEN THE SEWER MUST BE CONSTRUCTED OF WATER WORKS GRADE DUCTILE IRON PIPE WITH MECHANICAL JOINTS WITHIN TEN FEET OF THE WATER LINE.
 8. IT IS THE RESPONSIBILITY OF THE CONTRACTOR OR CONTRACTORS TO OBTAIN ALL FEDERAL, STATE, COUNTY, CITY OR LOCAL PERMITS FOR ANY AND ALL WORK REQUIRED UNLESS OTHERWISE NOTED. THE CONTRACTOR OR CONTRACTORS ARE RESPONSIBLE TO PAY FOR ALL REQUIRED PERMITS BY ANY OR ALL AGENCIES MENTIONED ABOVE UNLESS OTHERWISE NOTED IN THE CONTRACT OR SPECIFICATIONS. ALL ASSOCIATED BONDING REQUIREMENTS AND COSTS ARE INCIDENTAL TO THE CONTRACT.
 9. THE CONTRACTOR SHALL VERIFY ALL DIMENSIONS AND ELEVATIONS IN THE FIELD PRIOR TO THE START OF CONSTRUCTION. THE CONTRACTOR SHALL BE RESPONSIBLE FOR ALL FIELD DIMENSIONS AND ELEVATIONS DURING THE ENTIRE CONSTRUCTION SCHEDULE. IF ANY DISCREPANCIES ARE FOUND IN THESE ENGINEERING PLANS FROM ACTUAL FIELD DIMENSIONS, THE CONTRACTOR SHALL CONTACT THE ENGINEER IMMEDIATELY.
 10. ALL CONSTRUCTION METHODS AND MATERIALS MUST CONFORM TO CURRENT STANDARDS AND SPECIFICATIONS OF THE FEDERAL, STATE, COUNTY, CITY OR LOCAL REQUIREMENTS, WHICHEVER HAS JURISDICTION.
 11. CONTRACTOR IS RESPONSIBLE FOR ELECTRIC, TELEPHONE, AND CABLE CONDUITS AND TRENCHING COORDINATE WITH THE LOCAL UTILITY PROVIDERS AND MECHANICAL, ELECTRICAL AND PLUMBING PLANS FOR SIZES AND QUANTITIES REFER TO THE DRAWINGS FOR SITE LIGHTING CONDUIT FEEDS AND FIXTURE INFORMATION.
 12. WATER AND FIRE SERVICE SIZES AND CONNECTION LOCATIONS SHALL BE COORDINATED WITH THE MECHANICAL, ELECTRICAL AND PLUMBING PLANS.
 13. SANITARY LATERALS MUST MAINTAIN 10- FEET OF SEPARATION AND WYE CONNECTIONS LOCATED ON THE SAME SIDE OF THE MAIN MUST MAINTAIN A 10- FOOT SEPARATION. WYE CONNECTIONS ON OPPOSITE SIDES OF THE MAIN MUST MAINTAIN 4- FEET OF SEPARATION. SANITARY LATERALS AND GAS SERVICE LINES MUST MAINTAIN AT MINIMUM 2- FEET OF SEPARATION. ALL OTHER UTILITIES MUST MAINTAIN 10- FEET OF SEPARATION WITH SANITARY LATERALS.
 14. NEW 6" SANITARY LATERALS SHALL BE SDR-26 PVC, CONFORMING TO ASTM D2241, AND SHALL MEET THE DEFLECTION STANDARDS OF ASTM D-3303. PIPE FITTINGS SHALL BE SDR-26, CLASSIFICATION OF 12454-B, 12454-C OR 13343-C AS DEFINED IN ASTM D-1784. LATERAL CONNECTIONS SHALL OCCUR AT SDR-26 TEE-WYES. TRACER WIRE IS REQUIRED ON ALL SANITARY LATERALS. REFER TO CITY OF NOBLESVILLE STANDARD DETAILS.
 15. SANITARY LATERALS THAT CONNECT TO MANHOLES SHALL CONNECT WITH A GASKETED, FLEXIBLE, AND WATERTIGHT CONNECTION. BOTTOM SURFACE OF MANHOLE TO HAVE FLOW CHANNEL AT CONNECTING LATERAL LOCATION TO PREVENT DISCHARGE ON BENCHMARKS.
 16. FIRE HYDRANTS SHALL BE RED IN COLOR AS SHIPPED FROM THE MANUFACTURER. PAINTING THE HYDRANT ONSITE IS NOT ACCEPTABLE.

UTILITY LEGEND:

---	PROPOSED STORM SEWER LINE
SAN	PROPOSED SANITARY LINE
E	PROPOSED ELECTRIC LINE
T	PROPOSED TELEPHONE LINE
FO	PROPOSED FIBER OPTIC LINE
G	PROPOSED GAS LINE
W	PROPOSED WATER LINE
OH-W	PROPOSED OVERHEAD UTILITY LINE
---	PROPOSED CONDUIT
☀	PROPOSED LIGHT POLE
⊙	PROPOSED WALL MOUNTED FDC, HYDRANT, WALL PIV, WATER VALVE, FREE STANDING FDC
⊙	PROPOSED SANITARY MANHOLE, CLEAN OUT
⊙	PROPOSED ELECTRIC TRANSFORMER

UTILITY NOTE:
THE UNDERGROUND UTILITIES SHOWN HAVE BEEN LOCATED FROM FIELD SURVEY INFORMATION AND EXISTING DRAWINGS. THE SURVEYOR MAKES NO GUARANTEES THAT THE UNDERGROUND UTILITIES COMPRISE ALL SUCH UTILITIES IN THE AREA, EITHER IN-SERVICE OR ABANDONED. THE SURVEYOR FURTHER DOES NOT WARRANT THAT THE UNDERGROUND UTILITIES SHOWN ARE IN THE EXACT LOCATION INDICATED ALTHOUGH THE SURVEYOR DOES CERTIFY THAT THEY ARE LOCATED AS ACCURATELY AS POSSIBLE FROM INFORMATION AVAILABLE. THE SURVEYOR HAS NOT PHYSICALLY LOCATED THE UNDERGROUND UTILITIES. INDIANA 811 ONE-CALL PUBLIC UTILITY LOCATE SERVICE TICKET NUMBERS 2408250462, 2408250563 AND 2408250547 WERE ISSUED FOR THIS SITE. AMERICAN LOCATING SERVICES, A PRIVATE SUBSURFACE UTILITY LOCATING SERVICE, WAS CONTRACTED TO PERFORM THE PRIVATE UTILITY LOCATIONS FOR THE SUBJECT SITE. THE PRIVATE UTILITIES LOCATED AND DEPICTED HEREIN WERE EITHER OBSERVED FROM MARKINGS ON THE GROUND OR USING EXISTING PLANS.

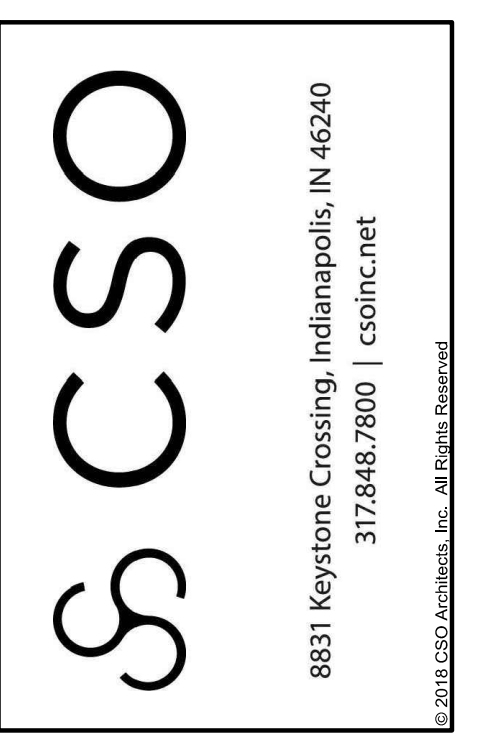
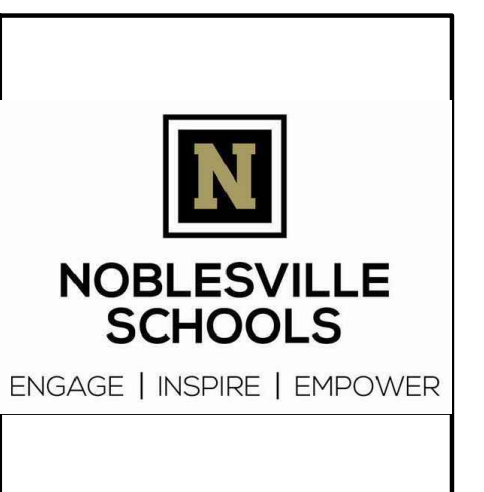
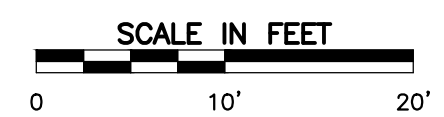
- REVISIONS:**
- 01/24/2025 - ADDENDUM #02
 - 01/28/2025 - ADDENDUM #03

BENCHMARKS:
UNLESS OTHERWISE NOTED, ELEVATIONS SHOWN HEREON ARE BASED UPON AN OPUS SOLUTION AND ARE ON THE 1988 NORTH AMERICAN VERTICAL DATUM (NAV88 (GEOID 18)). IT IS MY OPINION THAT THE UNCERTAINTY IN THE ELEVATION OF THE PROJECT BENCHMARK DOES NOT EXCEED 0.10 FOOT.

TBM#1: MAG NAIL IN A CONCRETE WALK LOCATED APPROXIMATELY 20' EAST OF THE BATTING CAGE AND 170' NORTH OF THE PRESS BOX AT THE HIGH SCHOOL SOFTBALL FIELDS. ELEV. = 783.84

TBM#2: MAG NAIL IN THE NORTHEAST CORNER OF THE NORTH END OF AN ASPHALT PATH LOCATED EAST OF THE CELL TOWER. ELEV. = 774.92

TBM#3: MAG NAIL ON THE SOUTH EDGE OF A CONCRETE WALK LOCATED NORTH OF THE MIDDLE SCHOOL TRACK AND APPROXIMATELY 60' WEST OF THE ASPHALT PATH TO THE NORTHEAST CORNER OF SAID TRACK. ELEV. = 775.11

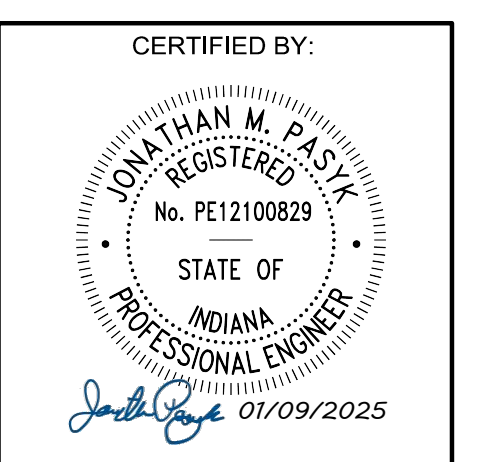


PROJECT:
**NOBLESVILLE SCHOOLS
NOBLESVILLE HIGH SCHOOL
CONCESSION BUILDINGS**
FIELD DR, NOBLESVILLE, IN 46060

SCOPE DRAWINGS:
These drawings include the general scope of this project in terms of architectural design, contract, the construction of the building, the major structural elements and the type of building materials and electrical systems. The drawings do not necessarily indicate or describe all work required for full performance and completion of the requirements of the Contract. No other drawings, specifications or other documents shall be required for the proper execution and completion of the work.

ISSUE DATE	DRAWN BY	CHECKED BY
01/09/25	SRD	JMP

DRAWING TITLE:
UTILITY PLAN



DRAWING NUMBER:
C510

PROJECT NUMBER:
DRAFT

MATCHLINE F - SEE SHEET C511

FOUNDATION PLAN NOTES

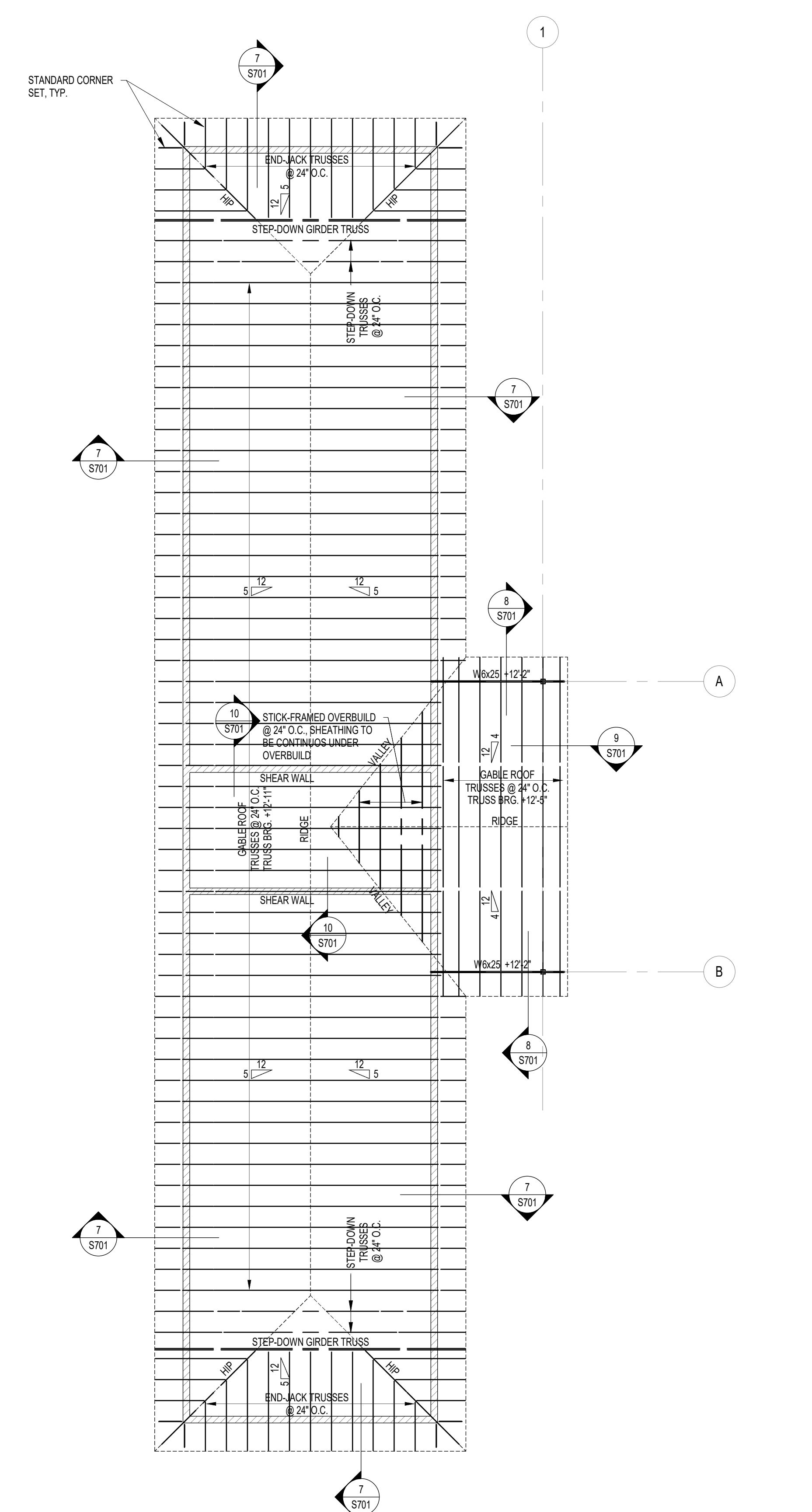
- REF. S001 FOR STRUCTURAL NOTES, DESIGN DATA, SCHEDULES & LEGENDS.
- REF. THE S400 SERIES FOR TYPICAL FOUNDATION AND MASONRY DETAILS.
- ALL CONTRACTORS ARE REQUIRED TO COORDINATE THEIR WORK WITH ALL DISCIPLINES TO AVOID CONFLICTS. THE MECHANICAL, ELECTRICAL AND PLUMBING ASPECTS ARE NOT IN THE SCOPE OF THESE DRAWINGS. THEREFORE, ALL REQUIRED MATERIALS AND WORK MAY NOT BE INDICATED.
- ALL ELEVATIONS ARE REFERENCED FROM THE FIRST FLOOR FIN. FLOOR ELEVATION +0'-0". VERIFY ELEVATION WITH CIVIL DWGS.
- ALL WALLS SHALL BE LAID OUT FROM THE ARCHITECTURAL DRAWINGS.
- REF. ARCH. DRAWINGS FOR ALL DIMENSIONS NOT SHOWN. CONTRACTOR SHALL VERIFY ALL DIMENSIONS PRIOR TO CONSTRUCTION AND IMMEDIATELY NOTIFY ARCHITECT/ENGINEER OF ANY DISCREPANCIES.
- COORDINATE EXACT SIZE & LOCATION OF ALL MECHANICAL OPENINGS IN FDN. WALLS WITH THE MECHANICAL, ELECTRICAL & PLUMBING CONTRACTORS.
- NOTE:** PERIMETER FOOTINGS SHALL BE LOWERED AND/OR SLEEVED TO PASS BELOW PLUMBING LINES (E.G. SANITARY & STORM LINES, WATER LINES, ETC.) SHOWN ON THE PLUMBING DRAWINGS. PROVIDE FOOTING STEPS AS REQUIRED PER THE TYPICAL DETAILS ON S401.
- ALL SLAB RECESSES SHALL BE LOCATED PER THE ARCHITECTURAL DRAWINGS. COORDINATE DEPTHS OF ALL SLAB RECESSES WITH THE ARCHITECTURAL DRAWINGS AND/OR THE FLOORING SUPPLIER.
- PROVIDE CMU REINFORCING AS NOTED ON PLANS & SECTIONS. IF NOT SHOWN ELSEWHERE, MINIMUM CMU WALL REINFORCING TO BE #5 VERTS @ 48" OC. PROVIDE OPEN-CORE BOND BEAMS AT TOPS OF WALLS. AT CHANGES IN CMU THICKNESS, AND WHERE INDICATED ON PLANS & SECTIONS (10'-0" OC MAX VERTICAL SPACING), PROVIDE 1/2 OF INTERRUPTED VERTICALS AT JAMBS OF OPENINGS AND PROVIDE ADDITIONAL VERTS. AT ENDS OF WALLS.
- COORDINATE REINFORCING DOVELS FOR CMU VERTICAL REINFORCING WITH REINF. NOTED ON PLANS & SECTIONS.
- GROUT ALL CORES OF CMU SOLID BELOW FIN. FLOOR ELEVATION.
- PROVIDE THICKENED SLAB UNDER ALL INTERIOR CMU WALLS WITHOUT FOOTINGS. SEE S401 FOR THICKENED SLAB DETAIL. REF. THE ARCHITECTURAL DRAWINGS FOR LOCATIONS OF CMU WALLS.
- ALL FOOTINGS SHALL BEAR ON APPROVED SOIL. UNDERCUT AS REQ'D. TO SUITABLE BEARING MATERIAL AS DETERMINED BY THE GEOTECHNICAL TESTING AGENCY. REF. TYPICAL FOOTING UNDERCUT DETAILS ON S402.
- PROVIDE CONTROL CONTRACTION JOINTS IN SLABS ON GRADE REF. TYPICAL DETAILS ON S401. ALL JOINTS IN SLABS TO RECEIVE THIN OR THICK-SET TERRAZZO, CERAMIC OR PORCELAIN TILE. VINYL-COMPOSITION TILE (VCT) OR VINYL SHEET GOODS. EPoxy OR SIMILAR THIN-FILM FINISH FLOORING SHALL BE CAREFULLY COORDINATED WITH THE FLOORING CONTRACTOR. THE CONTRACTOR SHALL SUBMIT SLAB JOINT LAYOUT TO ARCHITECT/ENGINEER FOR REVIEW PRIOR TO CASTING SLABS.
- EARTH-FORMED FOOTINGS ARE ACCEPTABLE WHERE SOIL CONDITIONS PERMIT (I.E. WHERE THE BANKS OF THE EXCAVATION WILL HOLD WITHOUT CAVING AND SLOUGHING). HOWEVER, THE PLAN DIMENSION OF EARTH-FORMED FOOTINGS MUST BE INCREASED BY 2" ALONG ALL EDGES TO ACCOUNT FOR INACCURACIES ASSOCIATED WITH EARTH-FORMING (I.E. 2" WIDE WALL FOOTINGS SHALL BE 2'-4" WIDE AND 5'-0" SQUARE COLUMN FOOTINGS SHALL BE 5'-4" SQUARE).
- REF. ARCHITECTURAL DWGS. FOR MASONRY CONTROL & EXPANSION JOINT LOCATIONS.
- ALL EXISTING CONSTRUCTION SHOWN IN PLAN AND/OR SECTION WAS DERIVED FROM EXISTING DWGS. AND SHALL BE FIELD VERIFIED. IF ANY DISCREPANCIES ARE DISCOVERED BETWEEN INFORMATION SHOWN ON THE DRAWINGS AND ACTUAL CONDITIONS, IMMEDIATELY CONTACT THE ARCHITECT/ENGINEER FOR DIRECTION BEFORE PROCEEDING WITH WORK.
- PLAN LEGEND:

F.F.	DENOTES FIN. FLOOR
T/X	DENOTES TOP OF FTG. SLAB, PER. ETC.
B/X	DENOTES BOTTOM OF FTG. GRADE BEAM, ETC.
C.J.	DENOTES SLAB ON GRADE CONTROL CONTRACTION JOINT
EX	DENOTES EXISTING CONSTRUCTION
TF30 -0'-0"	DENOTES TRENCH FOOTING MARK & TOP OF FOOTING ELEVATION (REF. WALL FTG. SCHEDULE)
---	DENOTES WALL FOOTING WITH STEPS. REF. TYP. DETAIL ON S401
---	DENOTES CMU FOUNDATION WALL
---	DENOTES CMU FDN. WALL HELD DOWN AT OPENINGS
---	DENOTES THICKENED SLAB UNDER INTERIOR NON-LOAD BEARING CMU WALLS
---	DENOTES SLAB ON GRADE THICKNESS & TSLAB ELEVATION. ALL SLABS ON GRADE TO BE PLACED ON 4" MIN. COMPACTED GRANULAR FILL & VAPOR BARRIER/RETARDER PER SPECS. PROVIDE THE FOLLOWING WELDED WIRE FABRIC REINFORCING: 4" SLAB: 6#6-W1.4W1.4 W/W 6" SLAB: 6#6-W2.8W2.9 W/W
---	DENOTES COLUMN FOOTING MARK & TOP OF FTG. ELEVATION (SEE COL. FTG. SCHED. ON THIS SHEET)
---	DENOTES COLUMN SIZE (REF. FRAMING PLANS FOR STUB COLS. NOT SHOWN ON FDN. PLAN)

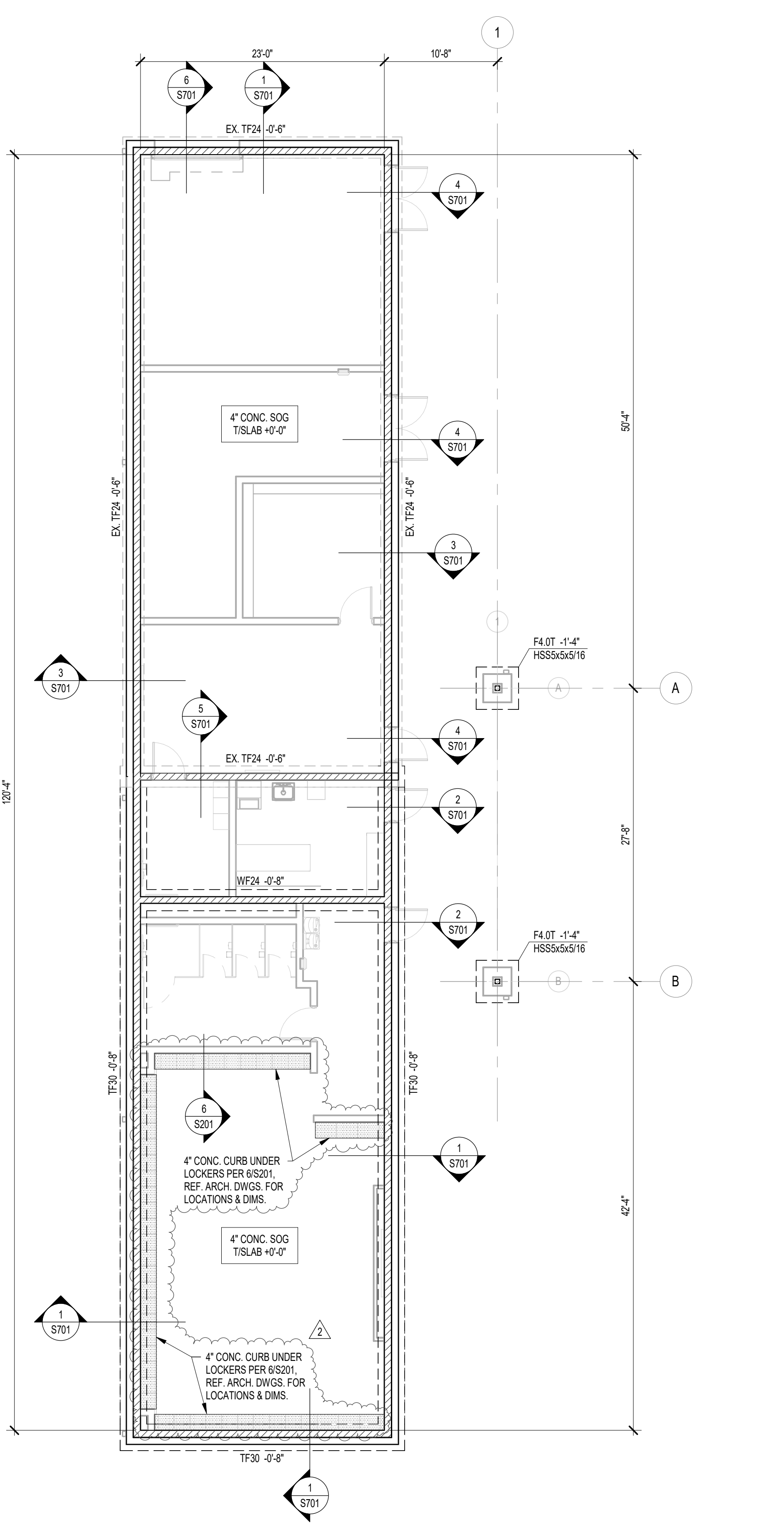
FRAMING PLAN NOTES

- REF. S001 FOR STRUCTURAL NOTES, DESIGN DATA, SCHEDULES & LEGENDS.
- REF. THE S400 SERIES FOR TYPICAL FRAMING AND MASONRY DETAILS.
- ALL CONTRACTORS ARE REQUIRED TO COORDINATE THEIR WORK WITH ALL DISCIPLINES TO AVOID CONFLICTS. THE MECHANICAL, ELECTRICAL AND PLUMBING ASPECTS ARE NOT IN THE SCOPE OF THESE DRAWINGS. THEREFORE, ALL REQUIRED MATERIALS AND WORK MAY NOT BE INDICATED.
- ALL ELEVATIONS ARE REFERENCED FROM THE FIRST FLOOR FIN. FLOOR ELEVATION +0'-0". VERIFY ELEVATION WITH CIVIL DWGS.
- ALL WALLS SHALL BE LAID OUT FROM THE ARCHITECTURAL DRAWINGS.
- REF. ARCH. DRAWINGS FOR ALL DIMENSIONS NOT SHOWN. CONTRACTOR SHALL VERIFY ALL DIMENSIONS PRIOR TO CONSTRUCTION AND IMMEDIATELY NOTIFY ARCHITECT/ENGINEER OF ANY DISCREPANCIES.
- COORDINATE EXACT SIZE & LOCATION OF ANY MECHANICAL OPENINGS IN FLOOR SLAB, ROOF DECK, OR WALLS WITH THE MEP CONTRACTORS. LOCATION & SIZE OF ALL DUCT OPENINGS, GRILLES, ETC. SHALL BE VERIFIED PRIOR TO CONSTRUCTION.
- ALL ELEVATIONS SHOWN ON PLAN INDICATE TOP OF STEEL BEAM UNLESS NOTED OTHERWISE.
- PROVIDE CMU REINFORCING AS NOTED ON PLANS. IF NOT SHOWN ON PLANS, MINIMUM CMU WALL REINFORCING TO BE #5 VERTS @ 48" OC. PROVIDE OPEN-CORE BOND BEAMS AT TOPS OF WALLS. AT CHANGES IN CMU THICKNESS, AND WHERE INDICATED ON PLANS & SECTIONS (10'-0" O.C. MAX VERTICAL SPACING), PROVIDE 1/2 OF INTERRUPTED VERTICALS AT JAMBS OF OPENINGS AND PROVIDE ADDITIONAL VERTS. AT ENDS OF WALLS.
- ALL MASONRY BOND BEAMS, OTHER THAN BOND BEAM UNITS OVER OPENINGS, SHALL BE OPEN-CORE BOND BEAMS TO ALLOW VERTICAL REINFORCING TO PASS THROUGH, UNLESS NOTED OTHERWISE.
- REF. ARCH. DWGS. FOR MASONRY CONTROL & EXPANSION JOINT LOCATIONS.
- PLAN LEGEND:

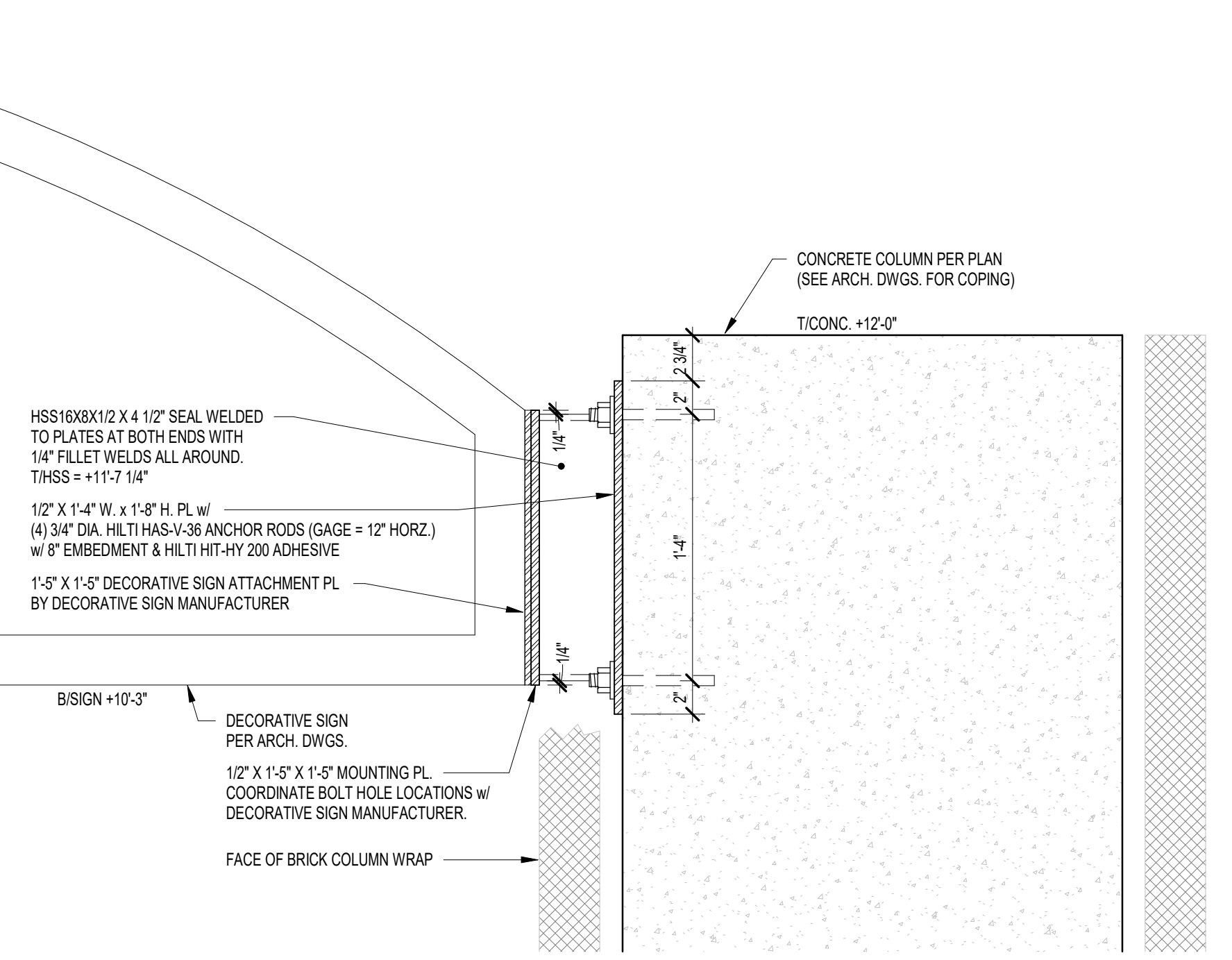
F.F.	DENOTES FIN. FLOOR
T/X	DENOTES TOP OF STEEL, SLAB, ETC.
B/X	DENOTES BOTTOM OF UNTEL, ETC.
EX	DENOTES EXISTING CONSTRUCTION



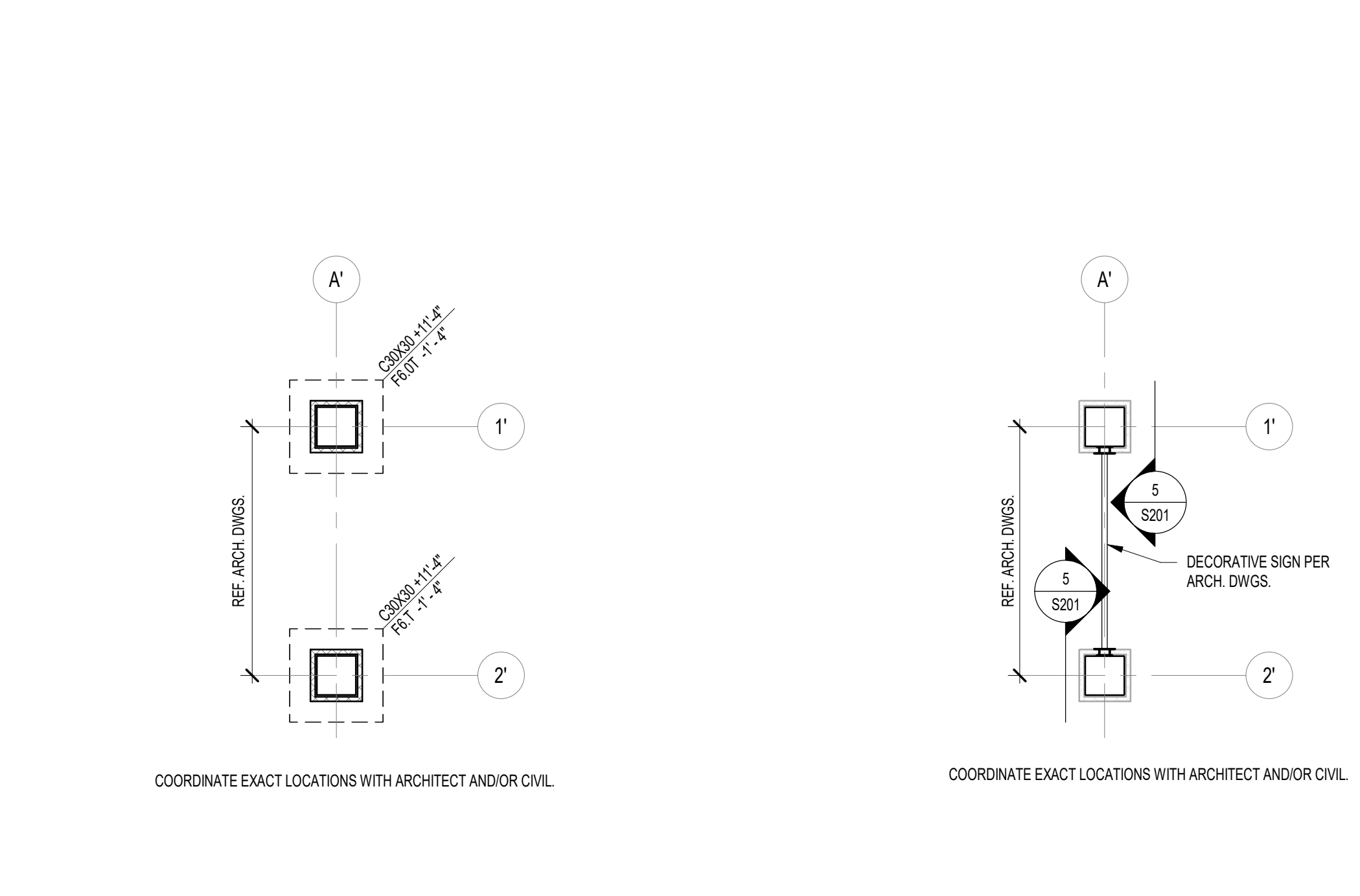
2 ROOF FRAMING PLAN
SCALE: 1/8" = 1'-0"
NORTH



1 FOUNDATION PLAN
SCALE: 1/8" = 1'-0"
NORTH

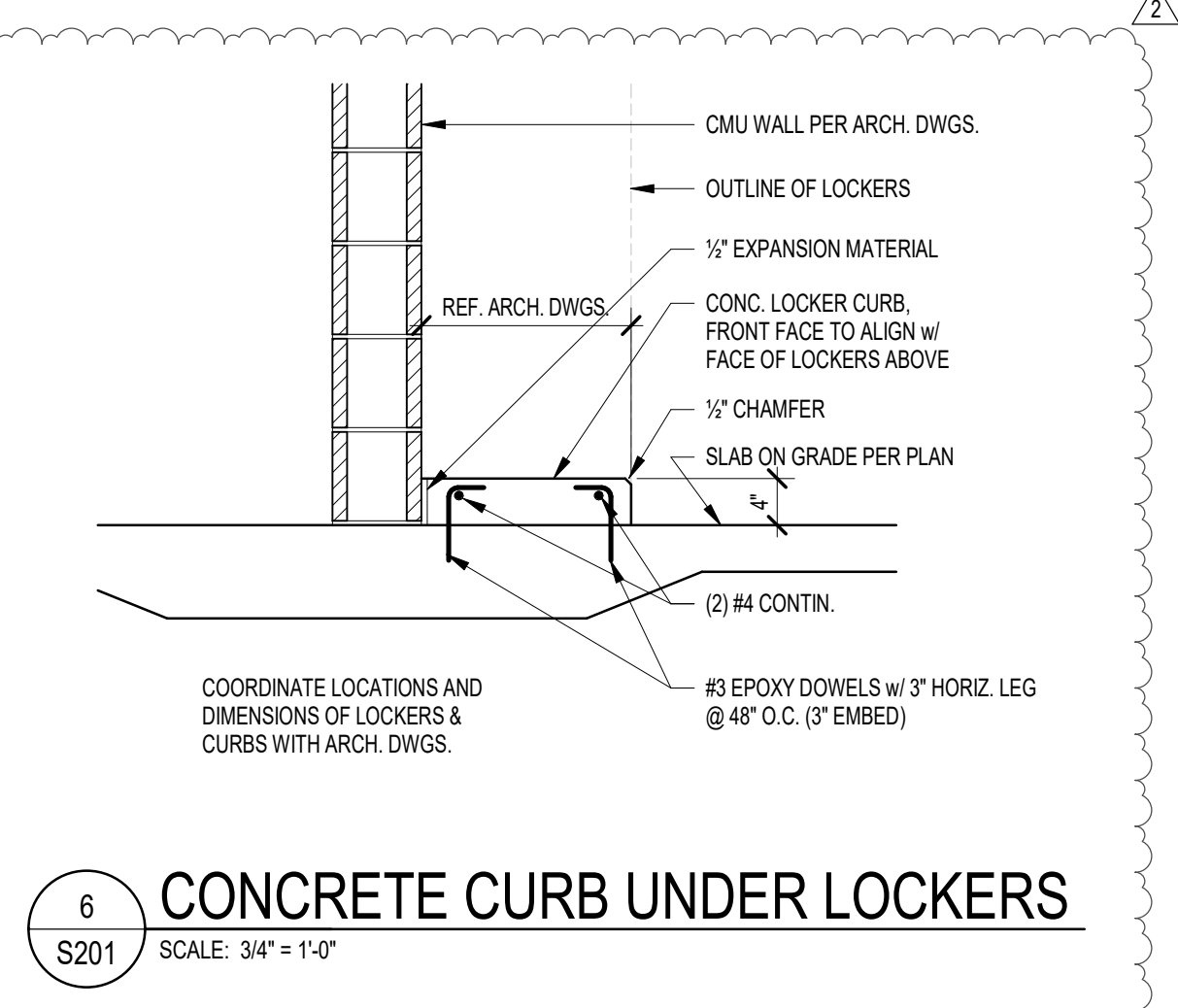


5 SECTION AT ENTRY SIGN BRACKET
SCALE: 1/12" = 1'-0"
NORTH



3 ENTRY SIGN FOUNDATION PLAN
SCALE: 1/8" = 1'-0"
NORTH

4 ENTRY SIGN FRAMING PLAN
SCALE: 1/8" = 1'-0"
NORTH



6 CONCRETE CURB UNDER LOCKERS
SCALE: 3/4" = 1'-0"
NORTH

WALL FOOTING SCHEDULE

FTG. MARK	FOOTING SIZE		FOOTING REINFORCING	
	WIDTH	DEPTH	LONGITUDINAL	TRANSVERSE
WF24	2'-0"	1'-0"	(2) #5 x CONTINUOUS	#4 x 1'-0" @ 96" O.C.
TF30	2'-0"	2'-4"	(3) #5 x CONTINUOUS TAB	#4 x 2'-0" @ 96" O.C. TAB

NOTES:

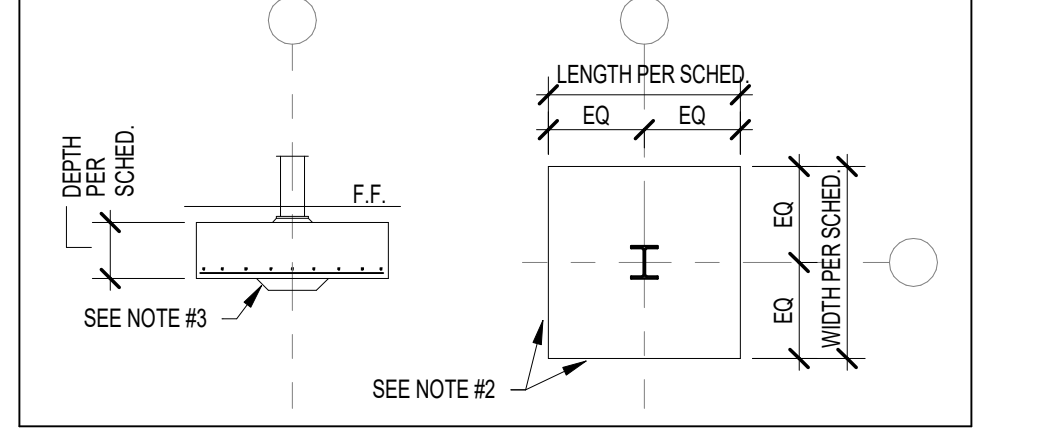
- CENTER FOOTINGS BENEATH WALLS, U.N.O.
- REF. DETAIL S5401 FOR TYP. CONSTRUCTION JOINT DETAIL.
- LAP FOOTING REINF. A MIN. OF 30 BAR DIAMETERS.
- PROVIDE BOTH TOP & BOTTOM REINF. AT FOOTINGS DENOTED WITH SUFFIX 'T' ON PLAN.

COLUMN FOOTING SCHEDULE

FOOTING MARK	FOOTING SIZE			REINFORCING (EACH WAY, U.N.O.)
	WIDTH	LENGTH	DEPTH	
F4.0T	4'-0"	4'-0"	2'-0"	(4) #5 x 3'-0" TAB
F6.0T	6'-0"	6'-0"	2'-4"	(6) #6 x 5'-0" TAB

NOTES:

- CENTER FOOTINGS BENEATH COLUMNS, U.N.O.
- ALL FOOTINGS MUST BE BOARD-FORMED, UNLESS APPROVED.
- INCREASE FOOTING DEPTH WHERE REQ'D TO ENCASE COLUMN ANCHOR RODS.
- PROVIDE BOTH TOP & BOTTOM REINF. AT FOOTINGS WITH SUFFIX 'T'.



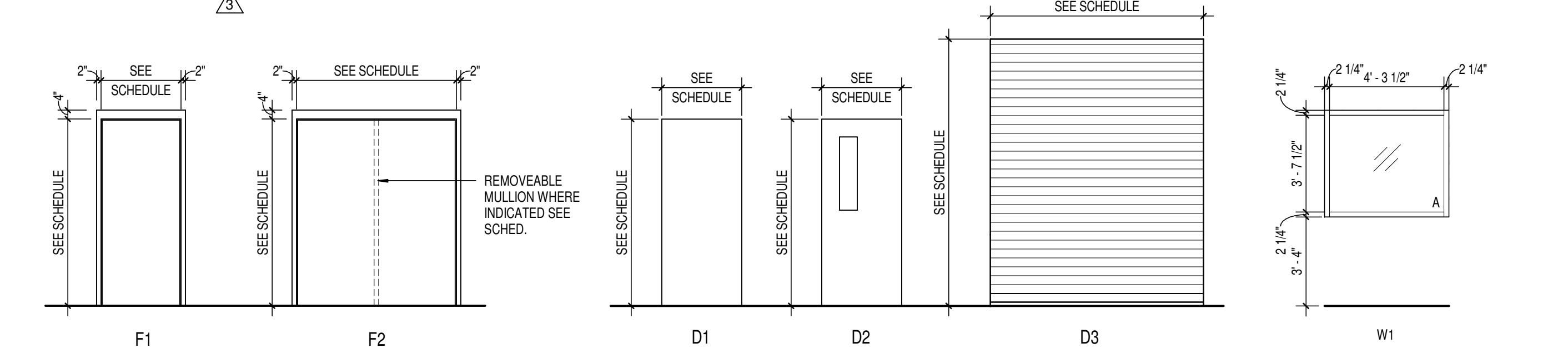
CONCRETE COLUMN SCHEDULE

COLUMN MARK	COLUMN SIZE	COLUMN REINFORCING			
		VERTICALS	TIES-SIZE & SPA.	T/COLUMN	T/FOOTING
C30x30	2'-0" x 2'-0"	(12) #8	#4 @ 12" O.C.	PER PLAN	PER PLAN

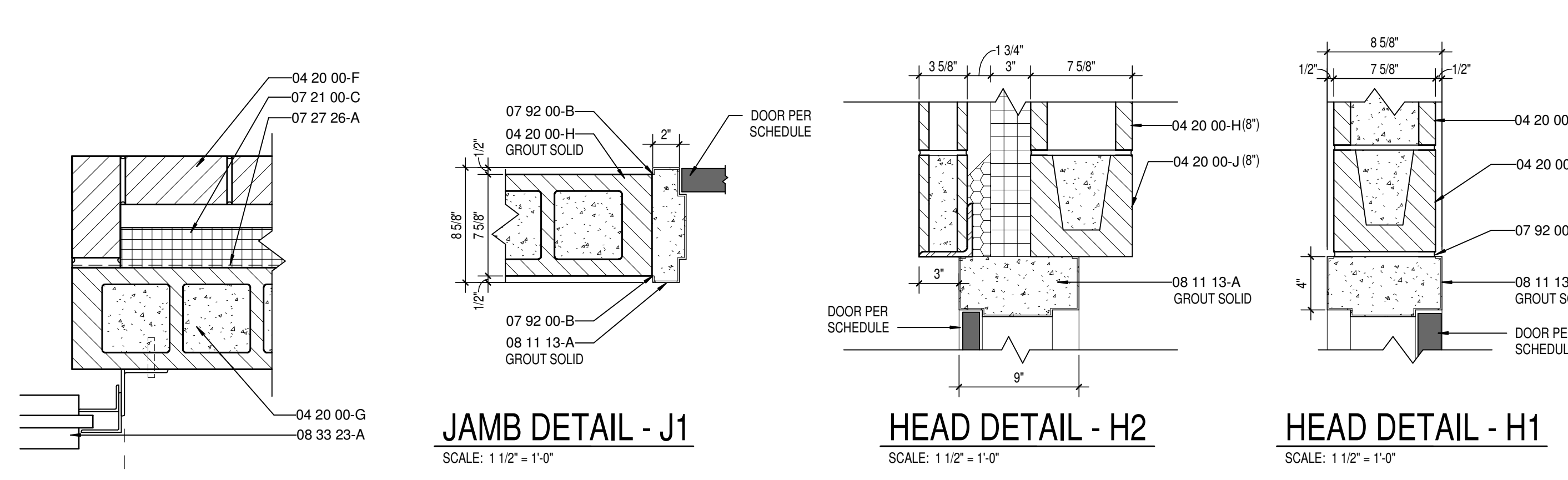
NOTES:

- PROVIDE MIN. 1 1/2" CLEAR TO COLUMN TIES.
- FIRST TIE SETS TO BE LOCATED 1/2 SPACE ABOVE FOOTING.
- PROVIDE DOWEL BARS TO MATCH SIZE AND QUANTITY OF COLUMN VERTICAL BARS. DOWEL BARS TO HAVE ACI STD HOOK AND 20" MIN EMBEDMENT IN FOOTING. LAP DOWEL BARS TO COLUMN VERTICAL BARS 6P.

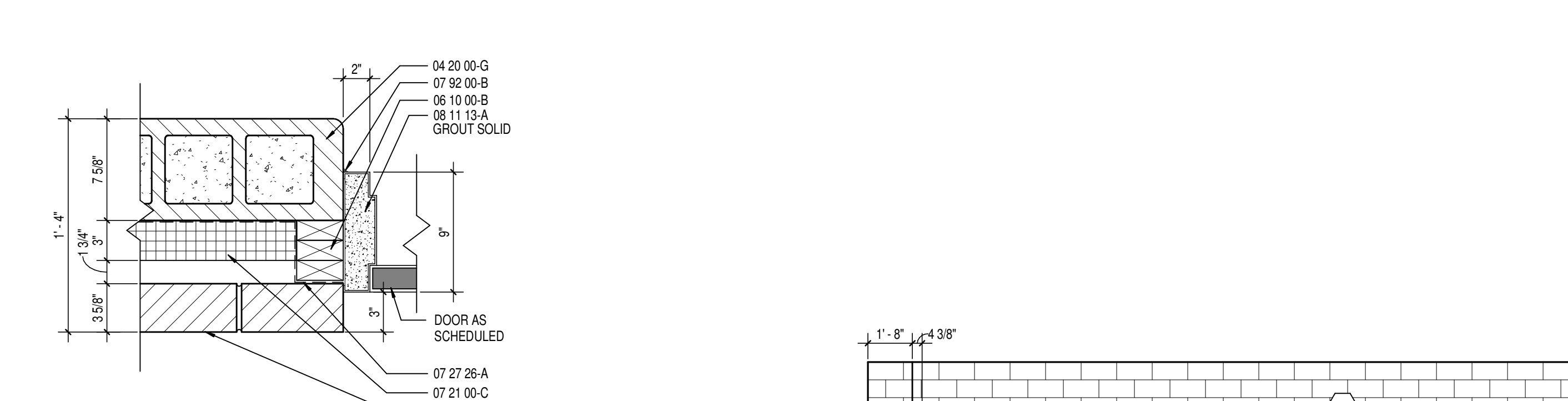
DOOR AND FRAME SCHEDULE																
DOOR MARK	SIZE			MATERIAL	FINISH	ELEVATION	FRAME			DETAIL			UL RATING	STC RATING	REMARKS	
	WIDTH	HEIGHT	THICKNESS				MATERIAL	FINISH	ELEVATION	GLASS	HEAD	JAMB				SILL
101	SGL	3'-0"	7'-0"	1.34"	HM	PT	D1	-	HM	PT	F1	-	H2	J3	-	CARD READER.
101A	SGL	3'-0"	7'-0"	1.34"	HM	PT	D1	-	HM	PT	F1	-	H1	J1	-	-
102	SGL	3'-0"	7'-0"	1.34"	HM	PT	D2	A	HM	PT	F1	-	H2	J3	-	CARD READER.
103	SGL	3'-0"	7'-0"	1.34"	HM	PT	D1	-	HM	PT	F1	-	H1	J1	-	CARD READER.
103A	SGL	3'-0"	7'-0"	1.34"	HM	PT	D1	-	HM	PT	F1	-	H1	J1	-	-
103B	SGL	3'-0"	7'-0"	1.34"	HM	PT	D1	-	HM	PT	F1	-	H1	J1	-	-
104	PAIR	3'-0"	7'-0"	1.34"	HM	PT	D1	-	HM	PT	F2	-	H2	J3	-	-
105-1	PAIR	3'-0"	7'-0"	1.34"	HM	PT	D1	-	HM	PT	F2	-	H2	J3	-	-
105-2	PCD	8'-0"	10'-0"	3/4"	GSTL	PC	D3	-	GSTL	PC	-	-	1/A301	J2	-	-



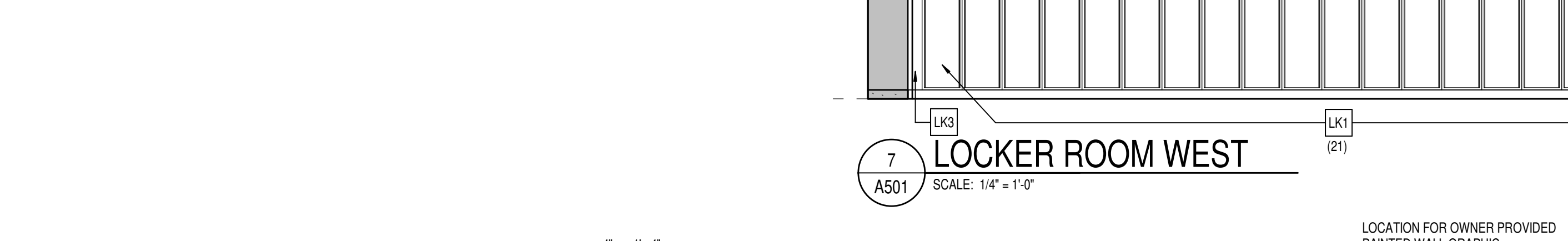
FRAME ELEVATIONS SCALE: 1/4" = 1'-0"
DOOR ELEVATIONS SCALE: 1/4" = 1'-0"
WINDOW ELEVATIONS SCALE: 1/4" = 1'-0"



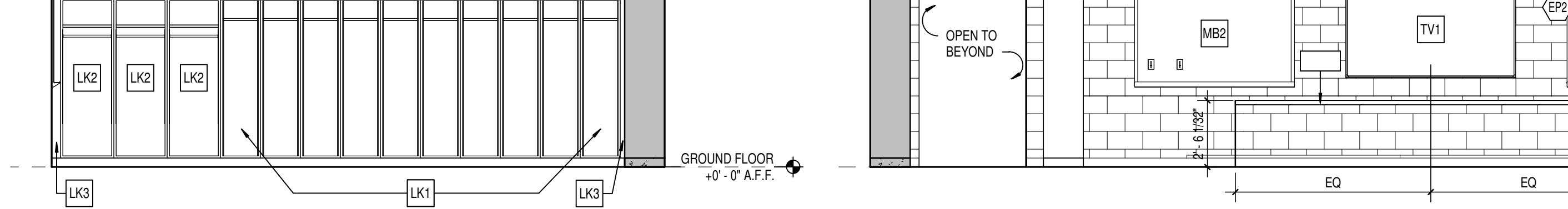
JAMB DETAIL - J1 SCALE: 1 1/2" = 1'-0"
HEAD DETAIL - H2 SCALE: 1 1/2" = 1'-0"
HEAD DETAIL - H1 SCALE: 1 1/2" = 1'-0"



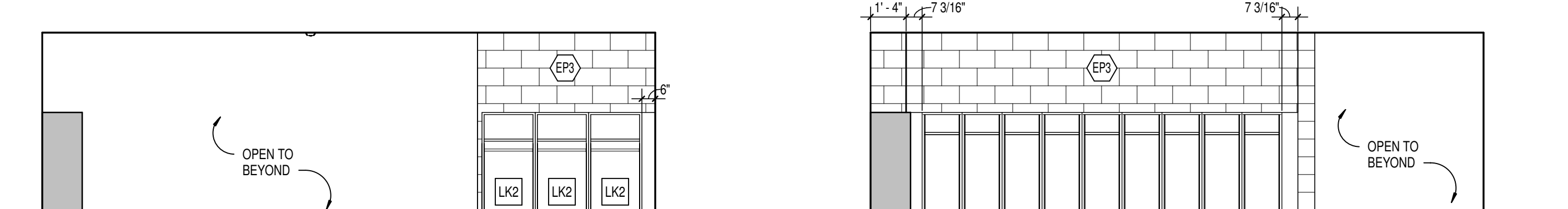
JAMB DETAIL - J2 SCALE: 1 1/2" = 1'-0"
JAMB DETAIL - J3 SCALE: 1 1/2" = 1'-0"



7 LOCKER ROOM WEST SCALE: 1/4" = 1'-0"



5 LOCKER ROOM EAST SCALE: 1/4" = 1'-0"



6 LOCKER ROOM SOUTH SCALE: 1/4" = 1'-0"

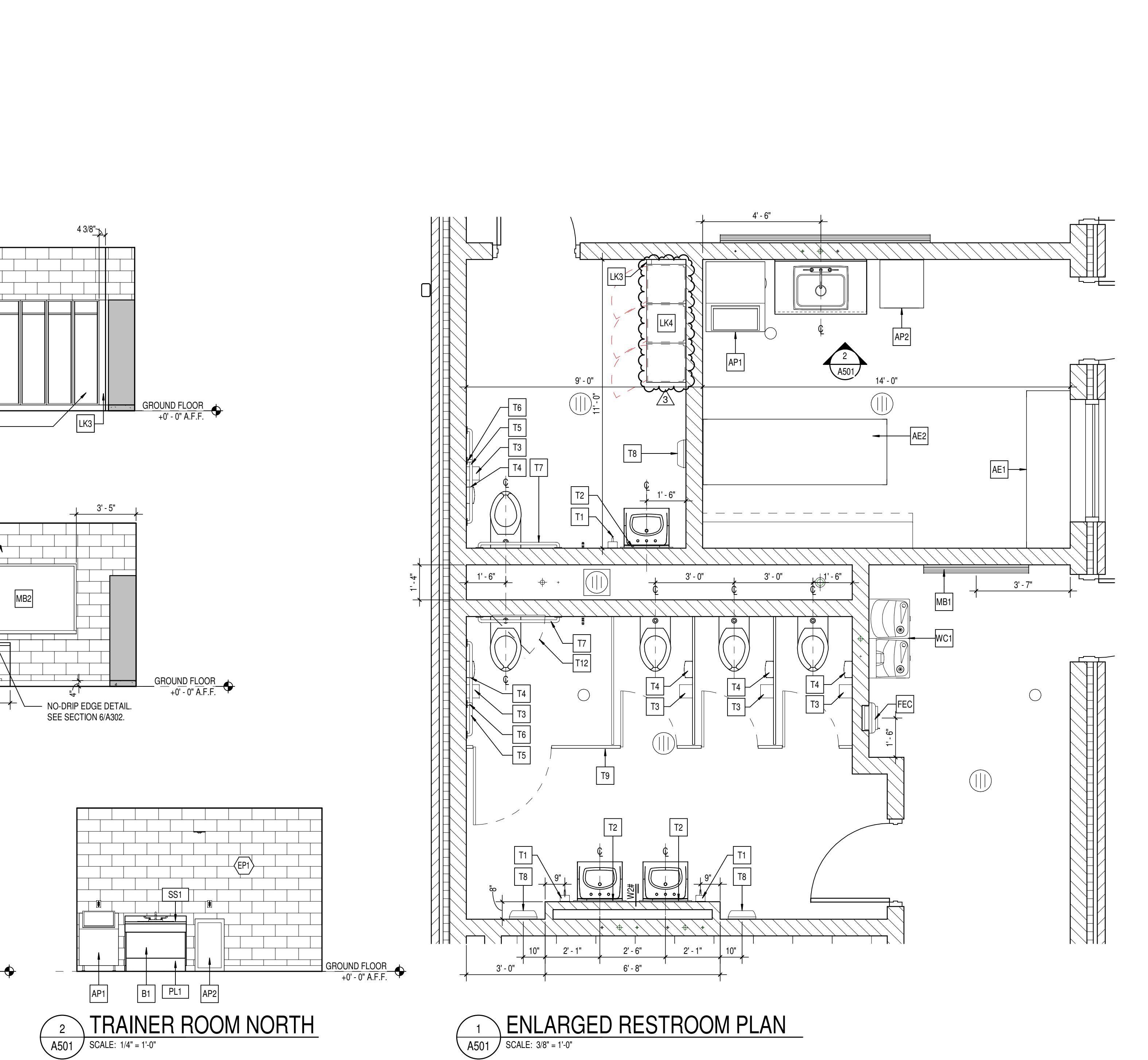


3 LOCKER ROOM NORTH SCALE: 1/4" = 1'-0"

SPECIALTY EQUIPMENT SCHEDULE - MASTER						
TYPE MARK	DESCRIPTION	SPEC. SECTION	MANUFACTURER	MODEL NO.	REMARKS	INSTALLED BY
AE1	TRAINER WORKBENCH	-	-	-	-	OWNER
AE2	TRAINER TABLE	-	-	-	-	OWNER
AEC	DEFIBRILATOR CABINET WITH DEFIBRILATOR	10 43 13	JL INDUSTRIES	1436	-	CONTRACTOR
AH1	22" x 40" INSULATED & FIRE RATED ATTIC HATCH	-	-	-	-	CONTRACTOR
AP1	ICE MACHINE	11 31 00	-	-	-	OWNER
AP2	MINI REFRIGERATOR	11 31 00	-	-	-	OWNER
FEC	FIRE EXTINGUISHER AND CABINET	10 44 13	JL INDUSTRIES	SEE SPECS	SEMI-RECESSED CABINET. MOUNT AS REQUIRED FOR ADA.	CONTRACTOR
LK1	METAL LOCKER 18"	10 51 13	ASI Storage	21181872A	LOCKER - SINGLE TIER - 18" WIDE - 18" DEEP - 72" HIGH - ADDER	CONTRACTOR
LK2	METAL LOCKER 24"	10 51 13	ASI Storage	41241872	LOCKER - 24" WIDE - 18" DEEP - 72" HIGH	CONTRACTOR
LK3	METAL LOCKER TRIM FILLED PANEL	10 51 13	ASI Storage	SEE SPECS	COLOR TO MATCH ADJACENT LOCKERS	CONTRACTOR
LK4	METAL LOCKER DOUBLE TIER 3-WIDE	10 51 13	LYON	SEE SPECS	LOCKER - DOUBLE TIER - 18" WIDE - 18" DEEP - 72" HIGH	CONTRACTOR
MB1	4'-0" W x 4'-0" H MARKERBOARD	10 11 00	CLARIDGE	SEE SPECS	MOUNT TOP @ +7'-0" AFF	CONTRACTOR
MB2	6'-0" W x 4'-0" H MARKERBOARD	10 11 00	CLARIDGE	SEE SPECS	MOUNT TOP @ +7'-0" AFF	CONTRACTOR
MB3	8'-0" W x 4'-0" H MARKERBOARD	10 11 00	CLARIDGE	SEE SPECS	MOUNT TOP @ +7'-0" AFF	CONTRACTOR
TV1	86" DISPLAY	11 31 00	PLANAR SYSTEMS	UR8651-MX	MOUNT TOP @ +7'-0" AFF WITH PLANAR PROFILE MOUNTING SYSTEM (TV W/ MOUNT 3.4" DEPTH)	OWNER
WC1	DRINKING FOUNTAIN	22 47 00	ELKAY	SEE PLUMBING SHEETS	-	CONTRACTOR
WS1	WALL MOUNTED WIRE SHELVING W/ HANGER ROD	10 57 00	CLOSETMAID	305	PVC COATED	CONTRACTOR

CASEWORK SCHEDULE						
TYPE MARK	DESCRIPTION	SPEC. SECTION	MANUFACTURER	MODEL NO.	SIZE	REMARKS
B1	BASE CASEWORK	12 32 16	STEVENS INDUSTRIES	41576	42"W x 32 1/2"H x 24"D	-
SS1	SOLID SURFACE COUNTER TOP - 12" DEEP	12 32 16	STEVENS INDUSTRIES	-	30"H x 12 1/2"D	-
SS1	SOLID SURFACE COUNTER TOP - 25" DEEP	12 32 16	STEVENS INDUSTRIES	-	36"H x 25"D	-

TOILET ACCESSORY SCHEDULE						
TYPE MARK	ITEM DESCRIPTION	MANUFACTURER	MODEL #	SIZE	MOUNTING HEIGHT	REMARKS
T1	SOAP DISPENSER - SURFACE MOUNTED	BY OWNER	-	-	-	-
T2	GLASS MIRROR - STAINLESS STEEL ANGLE FRAME	BOBRICK	B-165	-	-	-
T3	TOILET TISSUE DISPENSER - SURFACE MOUNTED	BY OWNER	-	-	-	MOUNT AS REQUIRED FOR ADA. COORDINATE LOCATION WITH GRAB BARS.
T4	SANITARY NAPKIN DISPOSAL	BOBRICK	B-270	-	TOP @ 30" A.F.F.	-
T5	GRAB BAR - 42"	BOBRICK	-	-	-	-
T6	GRAB BAR - 18"	BOBRICK	-	-	-	-
T7	GRAB BAR - 36"	BOBRICK	-	-	-	-
T8	INSTADRY SERIES SURFACE-MOUNTED AUTOMATIC HAND DRYER	BOBRICK	B-7125	-	-	-
T9	TOILET PARTITION	SEE SPEC #10 21 13	-	-	-	-
T12	24" x 24" ACCESS PANEL	NYSTROM	NTL 24x24	-	-	-
T13	3-POLE MOP RACK	BOBRICK	B224	-	MOUNT TOP @ 48" AFF.	-



1 ENLARGED RESTROOM PLAN SCALE: 3/8" = 1'-0"

GLASS SCHEDULE

A. 1" THICK TEMPERED, LOW E, INSULATING GLAZING WITH 2 PANE 1/4" GLASS AND 1/2" AIRSPACE.

ABBREVIATIONS LEGEND

AL = ALUMINUM
 AN = ANODIZED
 BL = BORROWED LITE
 GHM = GALVANNEALED HOLLOW METAL
 GL = GLASS
 HM = HOLLOW METAL
 PT = PAINT
 ST = START
 SS = STAINLESS STEEL
 STL = STEEL
 WD = WOOD
 90M = 90 MINUTE ASSEMBLY RATING
 * = SEE REMARKS COLUMN FOR NOTES

- ### GENERAL DOOR NOTES
- THESE GENERAL NOTES APPLY TO THE DOOR SCHEDULE.
 - DOOR AND FRAME NUMBERS CORRESPOND TO RESPECTIVE ROOM NUMBER. IN ROOMS WITH MULTIPLE OPENINGS, A NUMERICAL SUFFIX HAS BEEN ADDED TO DOOR NUMBERS.
 - VERTICAL FRAMING MEMBERS AT ALL DOOR FRAMES SHALL EXTEND TO STRUCTURE ABOVE.
 - UNDERCUT ALL DOORS AS REQUIRED BY FINAL FINISH.
 - PROVIDE CONTINUOUS SEALANT BETWEEN HOLLOW METAL FRAME PERIMETERS AND SURROUNDING WALL CONSTRUCTION.
 - GROUT FULL HOLLOW METAL FRAMES IN MASONRY CONSTRUCTION WINDOW, CURTAINWALL AND STOREFRONT FRAME PERIMETERS AND SURROUNDING CONSTRUCTION UNLESS NOTED OTHERWISE.
 - WHERE A FIRE RATING IS INDICATED ON THE DOOR SCHEDULE, HARDWARE AND DOOR ASSEMBLY COMPONENTS SHALL MEET THE REQUIREMENTS OF THAT LABEL.
 - WHERE AN STC RATING IS INDICATED ON THE DOOR SCHEDULE, HARDWARE AND DOOR ASSEMBLY COMPONENTS SHALL MEET THE REQUIREMENTS OF THAT LABEL.
 - INSTALL DOOR GLASS USING WET GLAZING METHOD.
 - ALL UNITS ABOVE EXTERIOR OPENINGS SHALL BE GALVANIZED.
 - COORDINATE THROAT OPENINGS WITH WALL WIDTH FOR ALL WRAP AROUND FRAMES.
 - ALL NEW HOLLOW METAL DOORS, FRAMES AND BORROWED LITE FRAMES TO BE PAINTED (EP2) AS INDICATED ON THE 4800 SERIES FINISH PLANS.
 - PROVIDE SILENCERS ON ALL DOOR FRAMES.
 - SEE STRUCTURAL DRAWINGS FOR REQUIREMENTS FOR MASONRY AND STEEL UNITS. PROVIDE STRUCTURAL STEEL UNITS AT OPENINGS OPENINGS WHERE INDICATED ON THE STRUCTURAL STEEL DRAWINGS IN LIEU OF MASONRY UNITS AS SHOWN IN THESE DETAILS.
 - VERIFY ALL EXISTING CONDITIONS AND DIMENSIONS IN THE FIELD PRIOR TO FABRICATION OF DOORS AND FRAMES. BRING DISCREPANCIES TO THE ATTENTION OF THE ARCHITECT.

- ### GENERAL CASEWORK NOTES
- PROVIDE FILLER PANELS AT ALL LOCATIONS WHERE CASEWORK IS FLANKED BY WALLS AS REQUIRED TO CLOSE OFF SPACE AND PROVIDE A NEAT FINISHED INSTALLATION. PROVIDE EQUAL FILLER PANELS AT EITHER SIDE OF CASEWORK TO BALANCE APPEARANCE.
 - PROVIDE FINISHED ENDS AT ALL CABINET SIDES PARTIALLY OR FULLY EXPOSED TO VIEW.
 - SEE INTERIOR CASEWORK ELEVATIONS FOR DOOR SWING.
 - PROVIDE COUNTER GROMMETS FOR ALL OPEN KNEE SPACE COUNTERTOP INSTALLATIONS. LOCATION AND QUANTITY OF GROMMETS TO BE VERIFIED WITH OWNER IN FIELD.
 - REFER TO A501 SERIES DRAWINGS FOR FINISHES NOT NOTED ON EQUIPMENT PLANS AND CASEWORK ELEVATIONS.

NOBLESVILLE SCHOOLS

CSO

8831 Keystone Crossing, Indianapolis, IN 46240
 317.246.7800 | csocncr.net

©2010 CSO Architects, Inc. All Rights Reserved.

NOBLESVILLE HIGH SCHOOL
SOFTBALL LOCKER ROOM BUILDING
 18111 Cumberland Rd., Noblesville, IN 46060

SCOPE DRAWINGS:

These drawings indicate the general scope of the project. The contractor shall be responsible for the coordination of all mechanical, electrical and plumbing systems. The contractor shall be responsible for the coordination of all work required for the performance and completion of the project. On the basis of the general scope indicated on these drawings, the contractor shall furnish all items required for the proper execution and completion of the work.

REVISIONS:

1	ADDENDUM #1	01/17/25
2	ADDENDUM #2	01/24/25
3	ADDENDUM #3	01/28/25

ISSUE DATE 01/10/25 **DRAWN BY** MEW **CHECKED BY** NW

DRAWING TITLE:
SCHEDULES, ENLARGED PLAN AND INTERIOR ELEVATIONS

CERTIFIED BY:
 BRADLEY J. KROHN
 REGISTERED ARCHITECT
 No. AR10800070
 STATE OF INDIANA

DRAWING NUMBER:
A501

PROJECT NUMBER:
 2024079